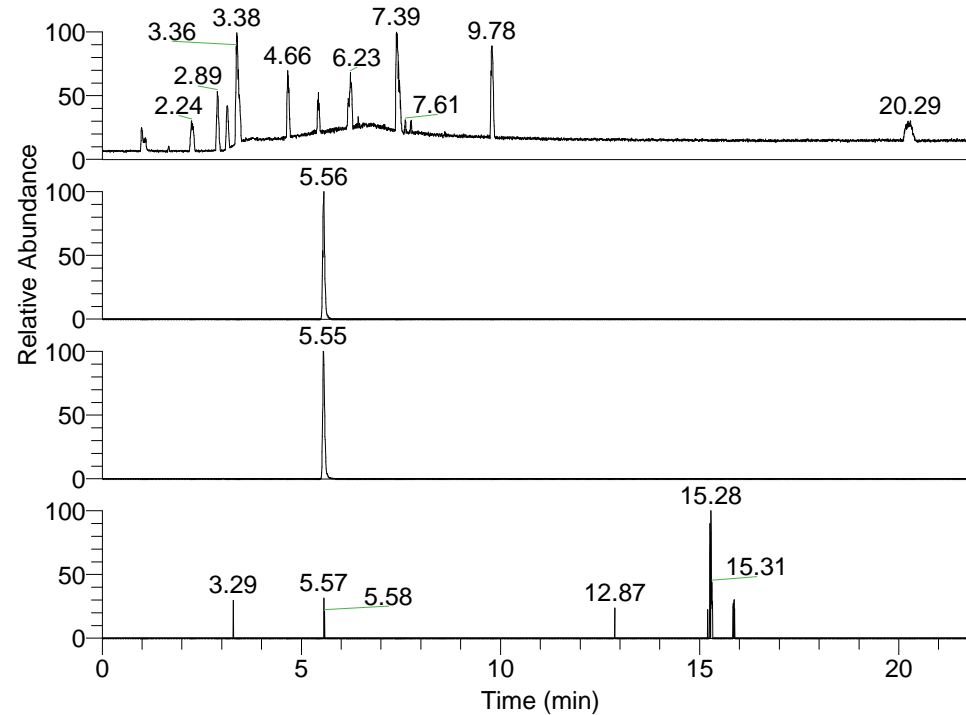


RT: 0.00 - 22.01



NL: 1.13E8  
Base Peak m/z=  
100.00000-1500.00000 F: FTMS + p  
ESI Full ms [100.00-1500.00] MS  
Hcurta\_HDX

NL: 2.71E6  
Base Peak m/z=  
474.39027-474.39501 F: FTMS + p  
ESI Full ms [100.00-1500.00] MS  
Hcurta\_HDX

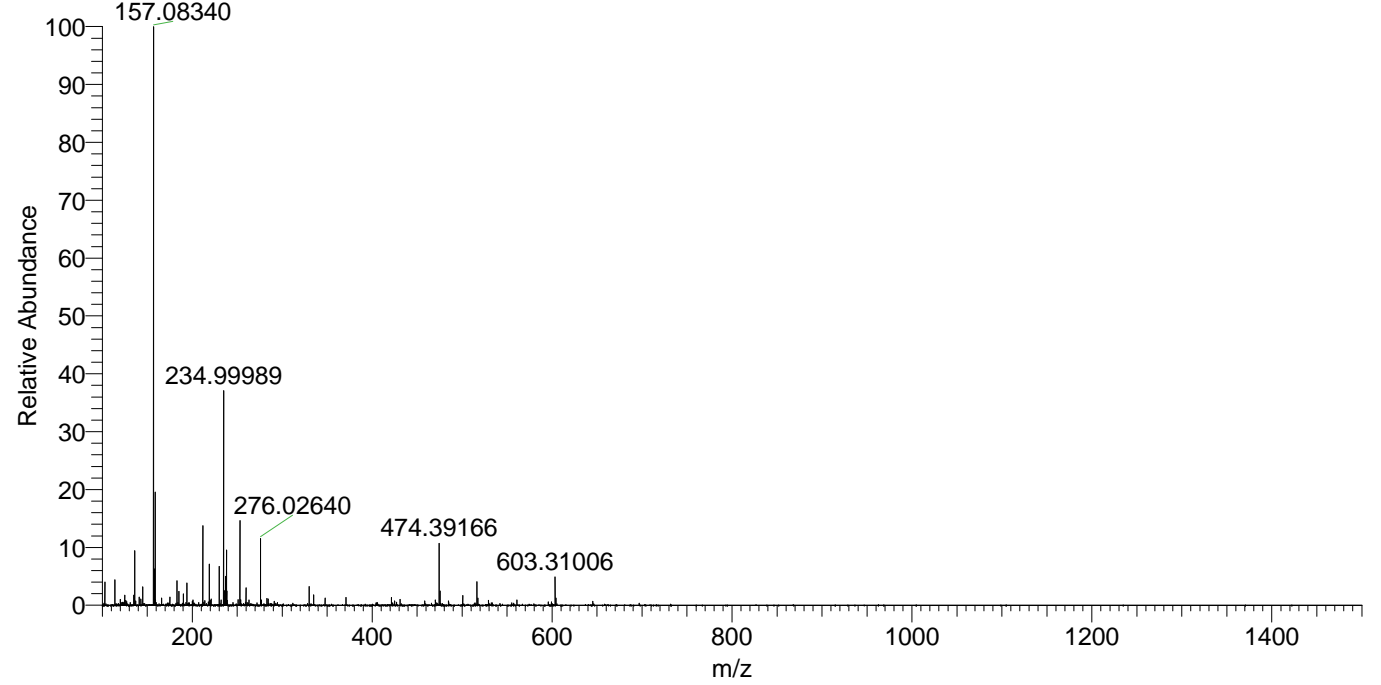
NL: 2.66E6  
Base Peak m/z=  
238.20218-238.20456 F: FTMS + p  
ESI Full ms [100.00-1500.00] MS  
Hcurta\_HDX

NL: 1.39E4  
Base Peak m/z=  
589.38883-589.39473 F: FTMS + p  
ESI Full ms [100.00-1500.00] MS  
Hcurta\_HDX

Hcurta\_HDX#883 RT: 5.56  
T: FTMS + p ESI Full ms [100.00-1500.00]  
m/z= 474.00000-475.00000

m/z	Intensity	Relative	Delta (ppm)	Composition
474.39166	2708519.3	100.00	-0.90	C <sub>24</sub> H <sub>40</sub> <sup>2</sup> H <sub>6</sub> O <sub>4</sub> N <sub>5</sub>
			2.36	C <sub>24</sub> H <sub>38</sub> <sup>2</sup> H <sub>7</sub> O <sub>4</sub> N <sub>5</sub>
			-4.17	C <sub>24</sub> H <sub>42</sub> <sup>2</sup> H <sub>5</sub> O <sub>4</sub> N <sub>5</sub>

Hcurta\_HDX #883 RT: 5.56 AV: 1 NL: 2.51E7  
T: FTMS + p ESI Full ms [100.00-1500.00]



Hcurta\_HDX #883 RT: 5.56 AV: 1 NL: 2.68E6  
T: FTMS + p ESI Full ms [100.00-1500.00]

