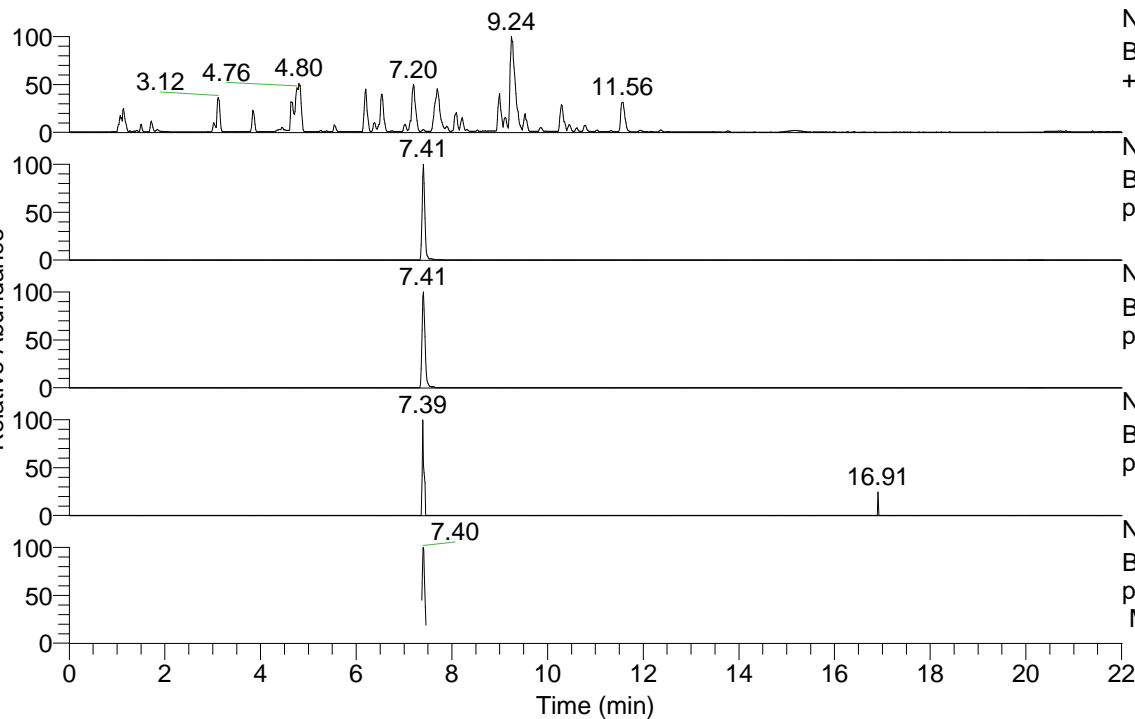


RT: 0.00 - 22.01



NL: 8.52E7
 Base Peak m/z= 100.00000-1500.00000 F: FTMS + p ESI Full ms [100.00-1500.00] MS Hcurta

NL: 2.84E6
 Base Peak m/z= 468.35030-468.35966 F: FTMS + p ESI Full ms [100.00-1500.00] MS Hcurta

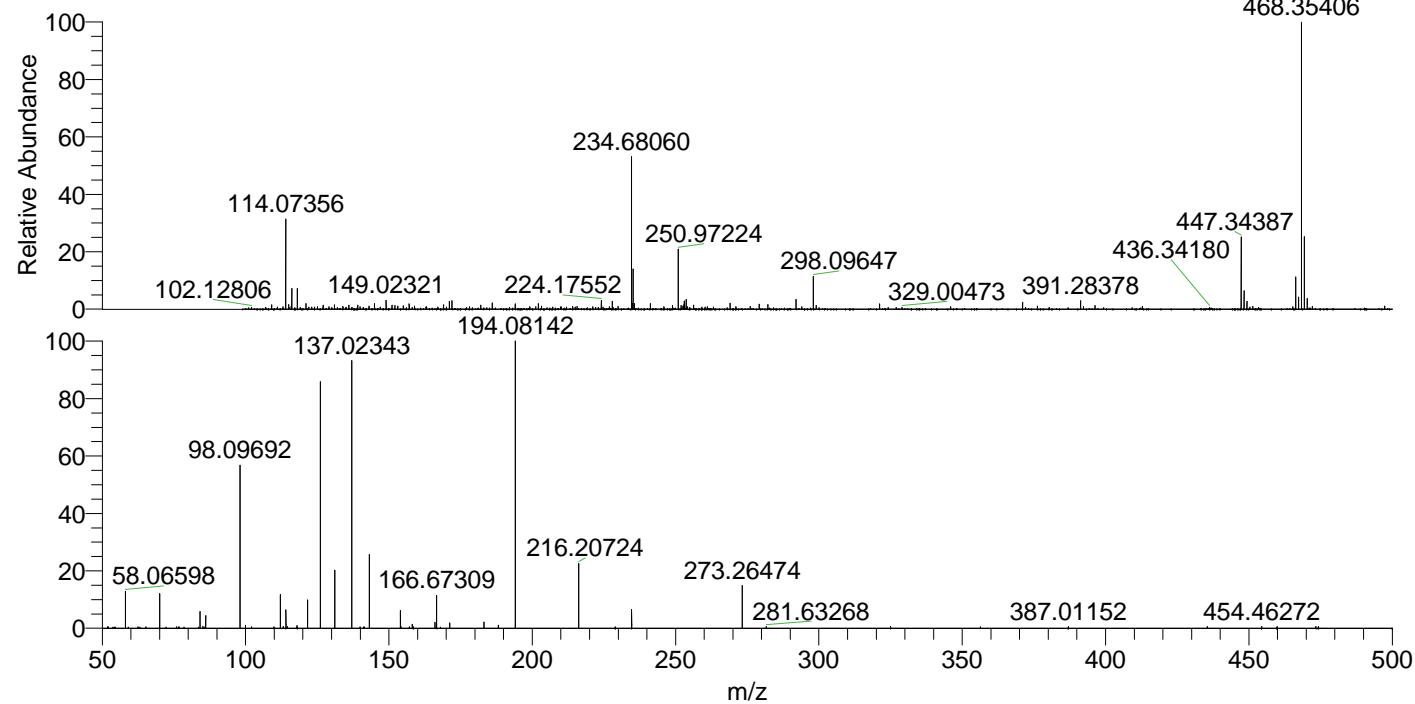
NL: 1.53E6
 Base Peak m/z= 234.67905-234.68375 F: FTMS + p ESI Full ms [100.00-1500.00] MS Hcurta

NL: 4.73E3
 Base Peak m/z= 582.34202-582.35366 F: FTMS + p ESI Full ms [100.00-1500.00] MS Hcurta

NL: 1.82E5
 Base Peak m/z= 50.00000-1500.00000 F: FTMS + p ESI d Full ms2 234.68@hcd35.00 [50.00-495.00] MS Hcurta

Hcurta#2957-2985 RT: 7.37-7.44 AV: 6
 F: FTMS + p ESI d Full ms2 234.68 ...
 m/z= 50.00000-1000.00000

m/z	Intensity	Relative
58.06598	14997.1	12.25
70.06592	13837.8	11.31
84.08157	6984.3	5.71
86.06076	1524.4	1.25
86.09718	4962.1	4.05
98.09694	71761.6	58.64
99.98760	1876.1	1.53
112.11265	12838.2	10.49
113.10794	665.7	0.54
114.09167	7867.9	6.43
114.62624	665.6	0.54
117.99811	1411.1	1.15
121.63358	14760.7	12.06
126.12793	105567.6	86.26
126.13648	1748.1	1.43
131.11808	23802.2	19.45
137.02340	116586.7	95.26
143.15435	31445.5	25.69
154.05040	7159.6	5.85
158.15964	1359.5	1.11
166.05026	2831.6	2.31
166.67314	13880.0	11.34
171.18619	1893.2	1.55
183.18548	2160.6	1.77
188.17665	1056.5	0.86
194.08135	122385.2	100.00
216.20728	28379.2	23.19
234.68140	7429.1	6.07
273.26470	18104.1	14.79
281.63268	651.4	0.53



NL: 2.84E6
 Hcurta#2971 RT: 7.41
 AV: 1 T: FTMS + p ESI
 Full lock ms
 [100.00-1500.00]

NL: 1.50E5
 Hcurta#2958-2984 RT:
 7.38-7.43 AV: 4 F: FTMS
 + p ESI d Full ms2
 234.68@hcd35.00
 [50.00-495.00]