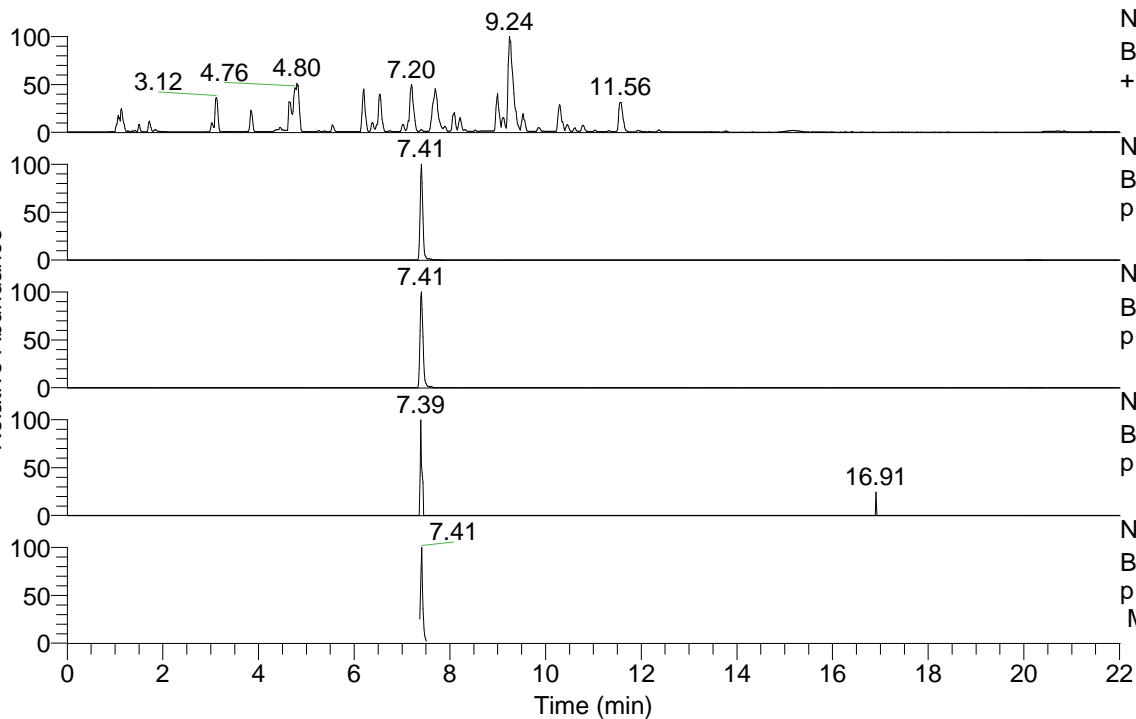


RT: 0.00 - 22.01



NL: 8.52E7
 Base Peak m/z= 100.00000-1500.00000 F: FTMS + p ESI Full ms [100.00-1500.00] MS Hcurta

NL: 2.84E6
 Base Peak m/z= 468.35030-468.35966 F: FTMS + p ESI Full ms [100.00-1500.00] MS Hcurta

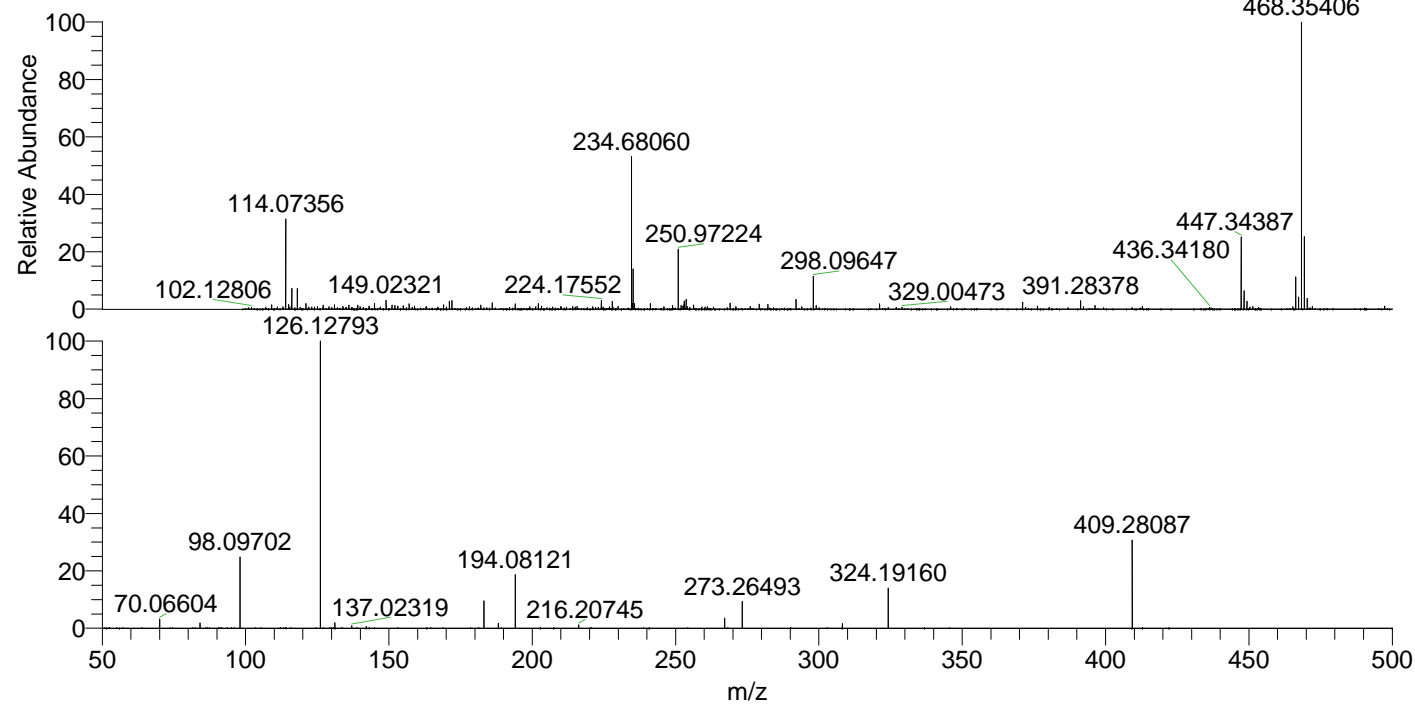
NL: 1.53E6
 Base Peak m/z= 234.67905-234.68375 F: FTMS + p ESI Full ms [100.00-1500.00] MS Hcurta

NL: 4.73E3
 Base Peak m/z= 582.34202-582.35366 F: FTMS + p ESI Full ms [100.00-1500.00] MS Hcurta

NL: 8.95E5
 Base Peak m/z= 50.00000-1500.00000 F: FTMS + p ESI Full ms2 468.35@hcd35.00 [50.00-495.00] MS Hcurta

Hcurta#2956-2984 RT: 7.37-7.44 AV: 6
 F: FTMS + p ESI d Full ms2 468.35 ...
 m/z= 50.00000-1000.00000

m/z	Intensity	Relative
70.06604	16174.7	3.29
84.08161	9129.7	1.85
98.09702	120995.7	24.58
126.12793	492234.7	100.00
131.11840	9400.5	1.91
137.02319	3861.1	0.78
142.12297	3099.3	0.63
183.18592	46868.0	9.52
188.17620	8459.8	1.72
194.08121	90170.1	18.32
216.20745	5973.8	1.21
267.13371	17438.7	3.54
273.26493	45807.8	9.31
308.19717	7914.4	1.61
324.19160	70192.0	14.26
409.28087	153143.6	31.11



NL: 2.84E6
 Hcurta#2971 RT: 7.41
 AV: 1 T: FTMS + p ESI
 Full lock ms
 [100.00-1500.00]

NL: 4.83E5
 Hcurta#2956-2989 RT:
 7.37-7.44 AV: 6 F: FTMS
 + p ESI d Full ms2
 468.35@hcd35.00
 [50.00-495.00]