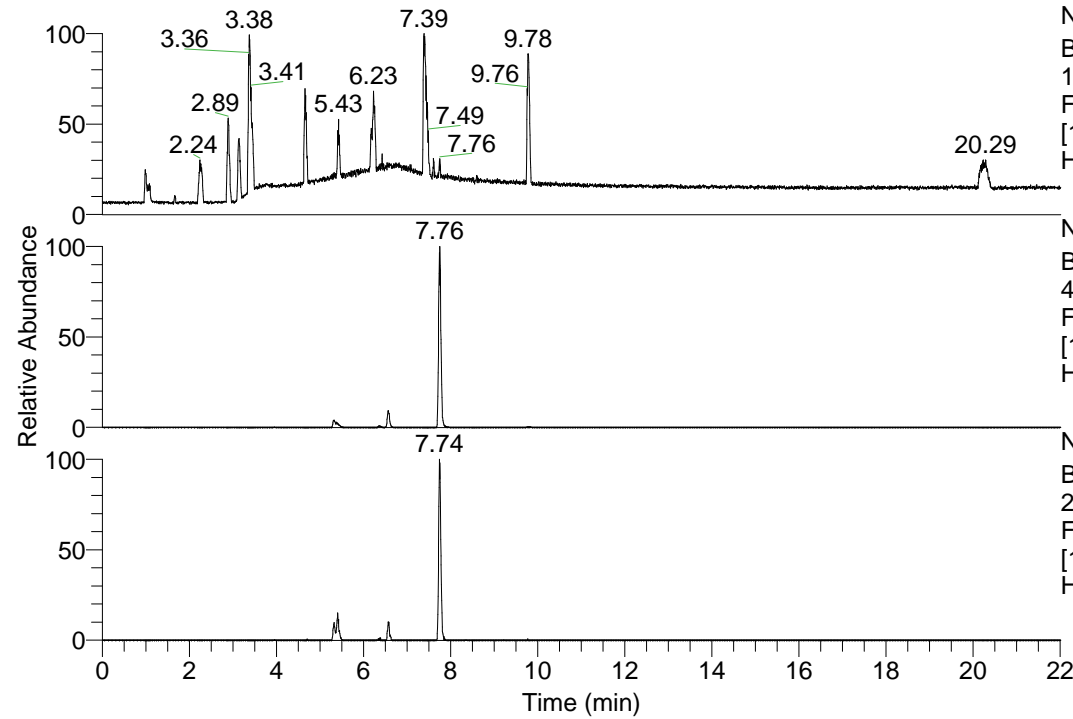


RT: 0.00 - 22.01



NL: 1.13E8  
Base Peak m/z=  
100.00000-1500.00000 F:  
FTMS + p ESI Full ms  
[100.00-1500.00] MS  
Hcurta\_HDX

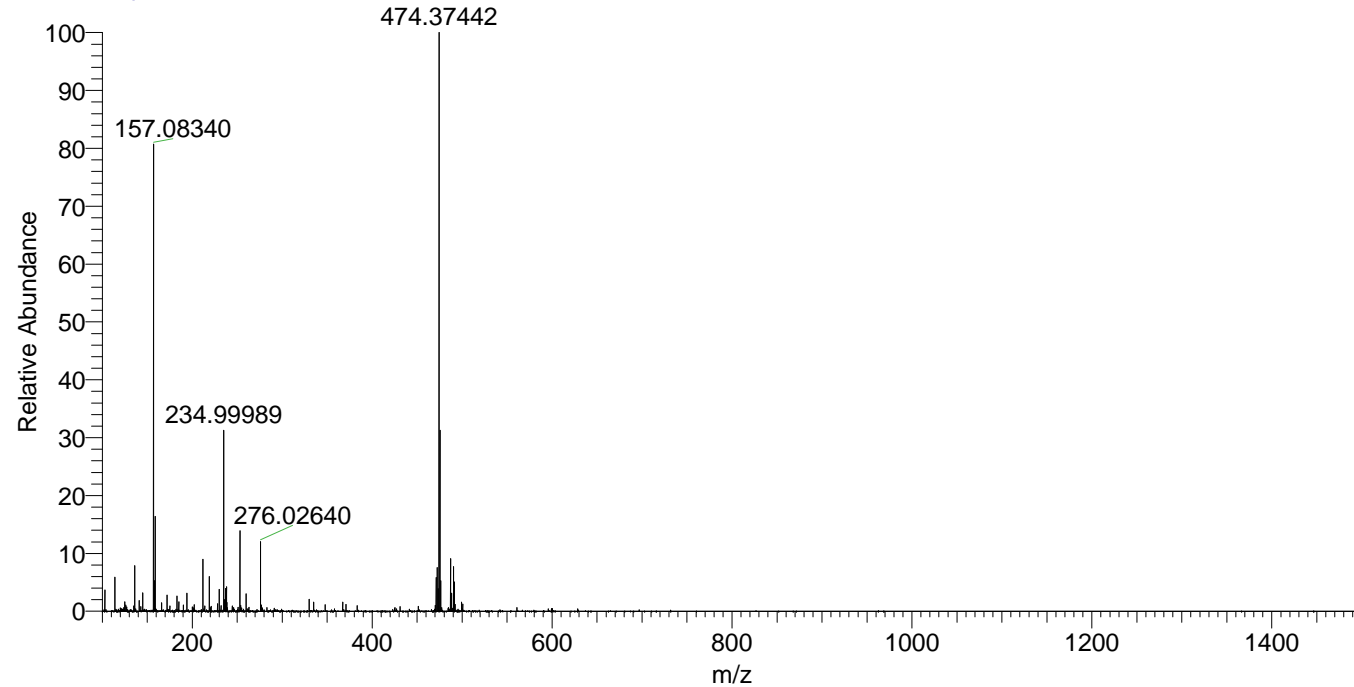
NL: 3.49E7  
Base Peak m/z=  
474.37305-474.37779 F:  
FTMS + p ESI Full ms  
[100.00-1500.00] MS  
Hcurta\_HDX

NL: 1.49E6  
Base Peak m/z=  
238.19357-238.19595 F:  
FTMS + p ESI Full ms  
[100.00-1500.00] MS  
Hcurta\_HDX

Hcurta\_HDX#1254 RT: 7.76  
T: FTMS + p ESI Full ms [100.00-1500.00]  
m/z = 474.00000-475.00000

m/z	Intensity	Relative	Delta (ppm)	Composition
474.37442	31198150.0	100.00	-0.95	C <sub>23</sub> H <sub>32</sub> <sup>2</sup> H <sub>9</sub> O <sub>4</sub> N <sub>6</sub>
			2.31	C <sub>23</sub> H <sub>30</sub> <sup>2</sup> H <sub>10</sub> O <sub>4</sub> N <sub>6</sub>
			-4.21	C <sub>23</sub> H <sub>34</sub> <sup>2</sup> H <sub>8</sub> O <sub>4</sub> N <sub>6</sub>

Hcurta\_HDX #1254 RT: 7.76 AV: 1 NL: 3.06E7  
T: FTMS + p ESI Full ms [100.00-1500.00]



Hcurta\_HDX #1254 RT: 7.76 AV: 1 NL: 3.06E7  
T: FTMS + p ESI Full ms [100.00-1500.00]

