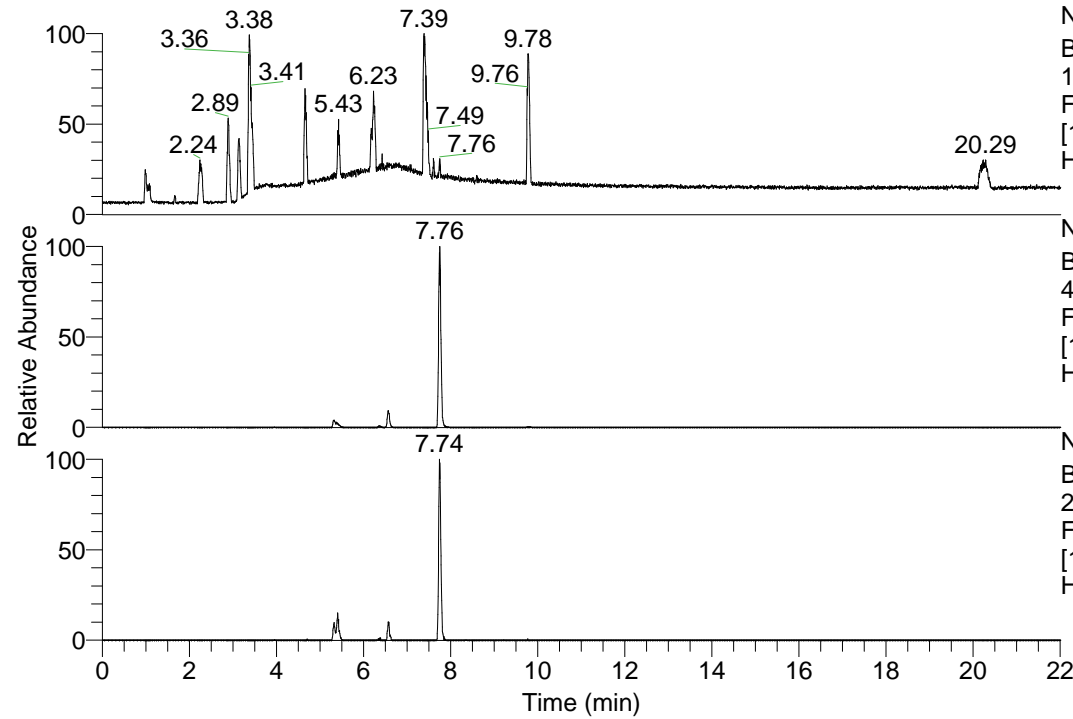


RT: 0.00 - 22.01



NL: 1.13E8
 Base Peak m/z=
 100.00000-1500.00000 F:
 FTMS + p ESI Full ms
 [100.00-1500.00] MS
 Hcurta_HDX

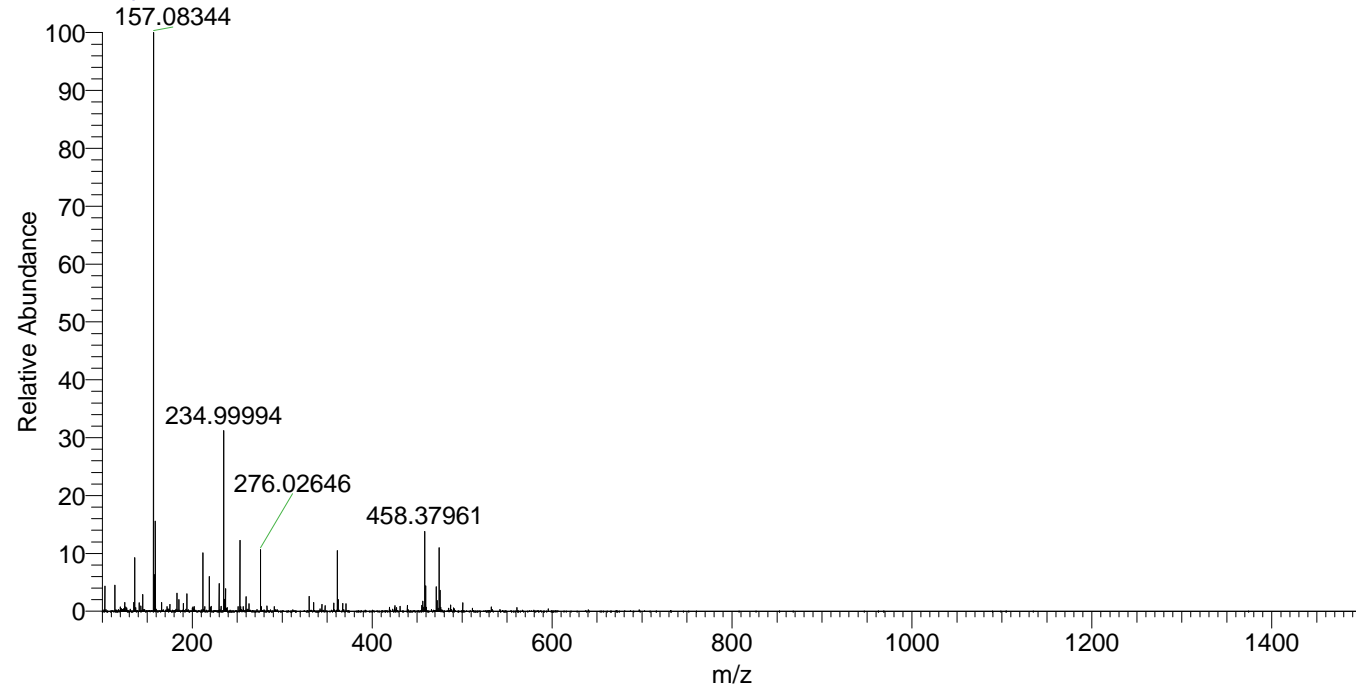
NL: 3.49E7
 Base Peak m/z=
 474.37305-474.37779 F:
 FTMS + p ESI Full ms
 [100.00-1500.00] MS
 Hcurta_HDX

NL: 1.49E6
 Base Peak m/z=
 238.19357-238.19595 F:
 FTMS + p ESI Full ms
 [100.00-1500.00] MS
 Hcurta_HDX

Hcurta_HDX#1053 RT: 6.57
 T: FTMS + p ESI Full ms [100.00-1500.00]
 m/z= 474.00000-475.00000

m/z	Intensity	Relative	Delta (ppm)	Composition
474.37454	3236547.3	100.00	-0.69	C ₂₃ H ₃₂ ² H ₉ O ₄ N ₆
			2.57	C ₂₃ H ₃₀ ² H ₁₀ O ₄ N ₆
			-3.96	C ₂₃ H ₃₄ ² H ₈ O ₄ N ₆

Hcurta_HDX #1053 RT: 6.57 AV: 1 NL: 2.89E7
 T: FTMS + p ESI Full ms [100.00-1500.00]



Hcurta_HDX #1053 RT: 6.57 AV: 1 NL: 3.18E6
 T: FTMS + p ESI Full ms [100.00-1500.00]

