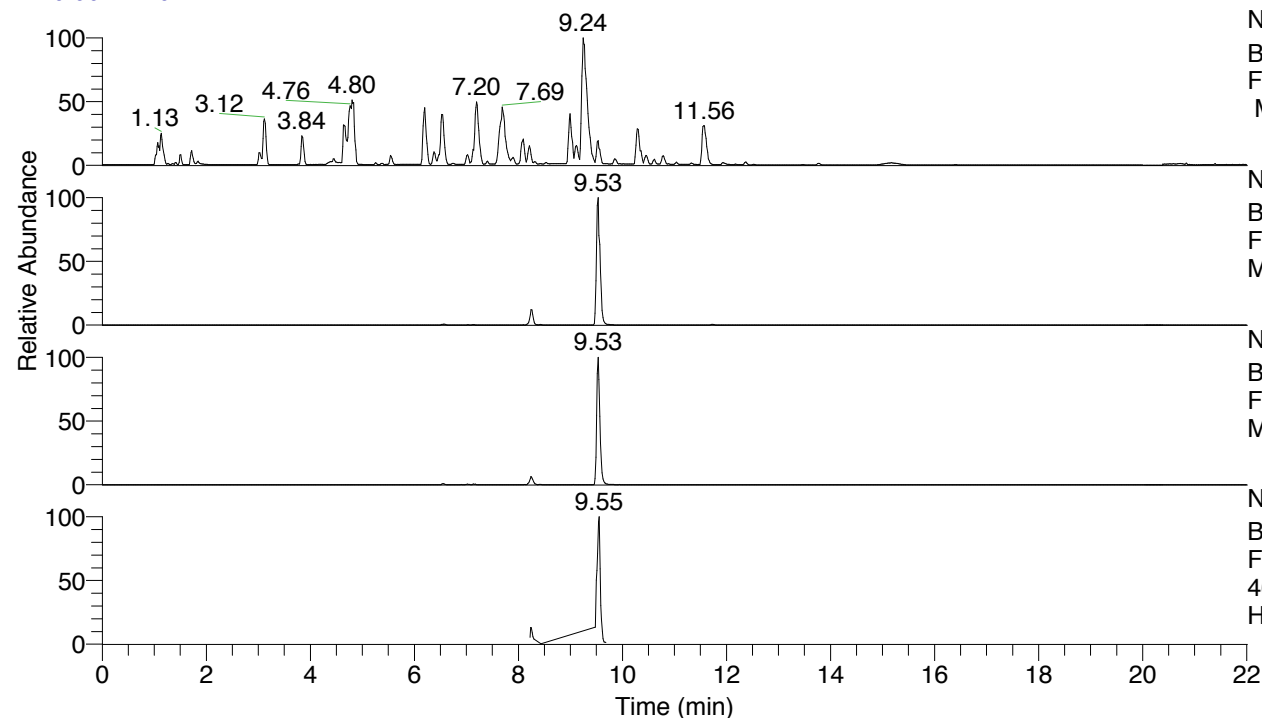


RT: 0.00 - 22.01



NL: 8.52E7  
 Base Peak m/z= 100.00000-1500.00000  
 F: FTMS + p ESI Full ms [100.00-1500.00]  
 MS Hcurta

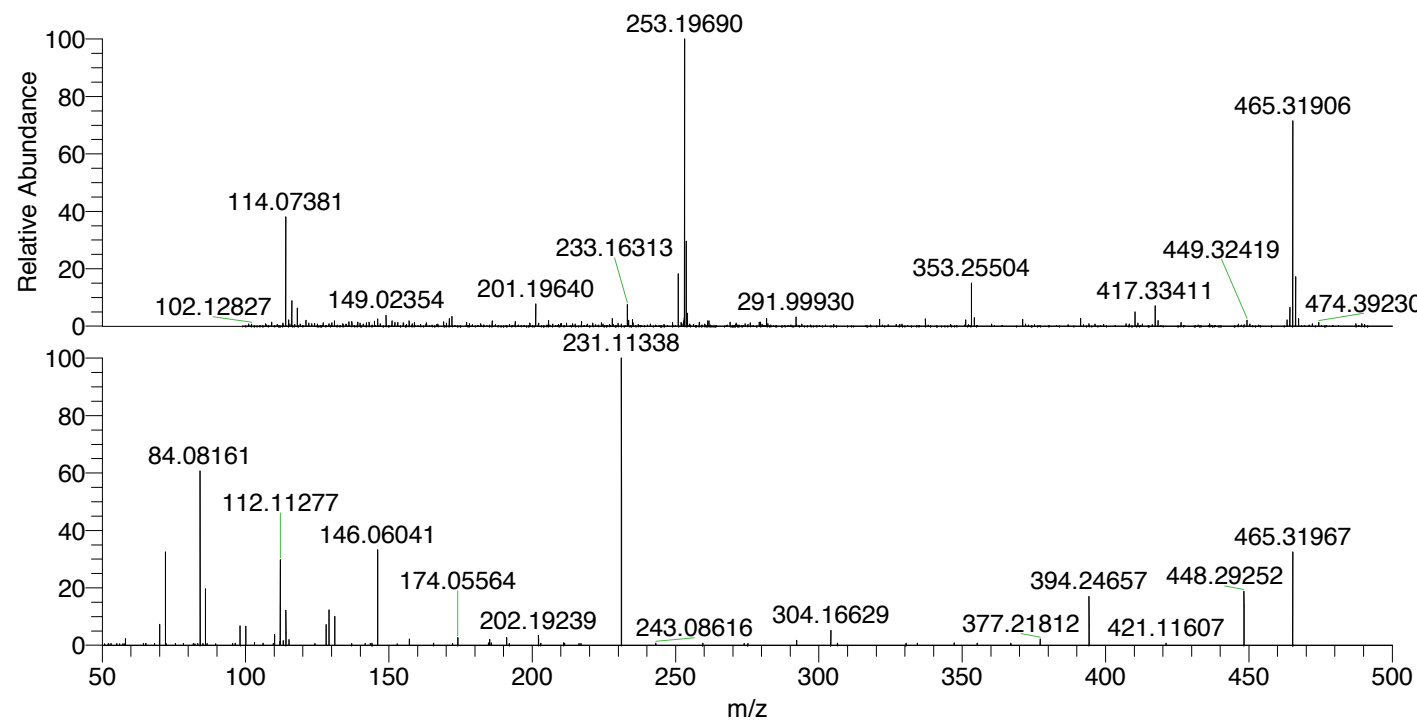
NL: 1.67E7  
 Base Peak m/z= 465.31428-465.32358 F:  
 FTMS + p ESI Full ms [100.00-1500.00]  
 MS Hcurta

NL: 3.36E6  
 Base Peak m/z= 233.16105-233.16571 F:  
 FTMS + p ESI Full ms [100.00-1500.00]  
 MS Hcurta

NL: 1.47E6  
 Base Peak m/z= 50.00000-1500.00000 F:  
 FTMS + p ESI d Full ms2  
 465.32@hcd35.00 [50.00-495.00] MS  
 Hcurta

Hcurta#3299-3321 RT: 8.22-8.28 AV: 5  
 F: FTMS + p ESI d Full ms2 465.32 ...  
 m/z= 50.00000-1000.00000

m/z	Intensity	Relative
55.09194	828.2	0.65
58.06603	2879.2	2.25
70.06598	9352.0	7.30
72.08171	41798.9	32.64
81.77414	817.7	0.64
84.08161	79086.3	61.75
84.16902	814.9	0.64
85.07694	847.5	0.66
86.06091	25778.2	20.13
96.37052	919.1	0.72
98.09726	8647.9	6.75
100.07644	8544.0	6.67
103.12353	1192.2	0.93
106.13666	868.1	0.68
110.09730	4769.5	3.72
112.07653	1862.4	1.45
112.11277	38084.6	29.74
113.10838	2125.8	1.66
114.09217	15776.1	12.32
115.12373	2470.1	1.93
128.10745	9143.0	7.14
129.13940	15756.6	12.30
131.11854	13111.3	10.24
144.12709	936.4	0.73
146.06041	42862.5	33.47
157.13425	2823.2	2.20
165.57183	955.3	0.75
172.18284	808.2	0.63
174.05564	3427.3	2.68
184.73737	1038.9	0.81
185.16570	2760.5	2.16
185.70588	1045.6	0.82
191.08277	3523.2	2.75
202.19239	4500.4	3.51
211.01330	1090.9	0.85
211.31424	961.3	0.75
216.98752	806.9	0.63
231.11338	128076.6	100.00
243.08616	921.0	0.72
259.49683	865.1	0.68
273.96856	803.2	0.63
275.24574	851.1	0.66
292.27286	2215.6	1.73
304.16629	6748.5	5.27
306.48400	913.0	0.71
330.40987	910.6	0.71
334.35714	872.3	0.68
347.20901	1037.8	0.81
355.22959	955.6	0.75
366.96988	1023.7	0.80
377.21812	2840.3	2.22
394.24657	21839.7	17.05
421.11607	886.7	0.69
448.29252	24074.2	18.80
465.31967	42487.3	33.17



NL: 2.84E6  
 Hcurta#3307 RT: 8.24  
 AV: 1 T: FTMS + p ESI  
 Full lock ms  
 [100.00-1500.00]

NL: 1.28E5  
 Hcurta#3298-3324 RT:  
 8.22-8.28 AV: 5 F: FTMS  
 + p ESI d Full ms2  
 465.32@hcd35.00  
 [50.00-495.00]

Hcurta#3299-3321 RT: 8.22-8.28 AV: 5

F: FTMS + p ESI d Full ms2 465.32@hcd35.00 [50.00-495.00]

m/z= 50.00000-1000.00000

m/z	Intensity	Relative
52.08738	650.6	0.51
52.33973	646.4	0.50
53.05817	745.9	0.58
53.05985	682.4	0.53
55.09194	828.2	0.65
56.05983	645.5	0.50
57.15303	685.1	0.53
57.62659	668.8	0.52
58.06603	2879.2	2.25
64.32229	737.2	0.58
65.07990	669.1	0.52
65.28564	726.0	0.57
68.21184	751.0	0.59
70.06598	9352.0	7.30
72.08171	41798.9	32.64
72.22641	751.2	0.59
75.48898	735.7	0.57
78.31120	785.8	0.61
81.77414	817.7	0.64
82.27994	696.7	0.54
83.37314	789.6	0.62
84.08161	79086.3	61.75
84.16902	814.9	0.64
85.07694	847.5	0.66
86.06091	25778.2	20.13
86.57952	768.1	0.60
89.56436	715.3	0.56
95.47259	747.2	0.58
96.37052	919.1	0.72
98.09726	8647.9	6.75
98.12195	781.4	0.61
100.07644	8544.0	6.67
103.12353	1192.2	0.93
106.13666	868.1	0.68
109.68295	758.8	0.59
110.09730	4769.5	3.72
112.07653	1862.4	1.45
112.11277	38084.6	29.74
113.10838	2125.8	1.66

Hcurta#3299-3321 RT: 8.22-8.28 AV: 5

F: FTMS + p ESI d Full ms2 465.32@hcd35.00 [50.00-495.00]

m/z= 50.00000-1000.00000

m/z	Intensity	Relative
114.09217	15776.1	12.32
115.12373	2470.1	1.93
124.15522	774.3	0.60
128.10745	9143.0	7.14
129.13940	15756.6	12.30
131.11854	13111.3	10.24
136.98687	772.9	0.60
141.72616	792.9	0.62
143.52947	752.8	0.59
144.12709	936.4	0.73
146.06041	42862.5	33.47
152.91680	691.0	0.54
157.13425	2823.2	2.20
165.57183	955.3	0.75
172.18284	808.2	0.63
174.05564	3427.3	2.68
184.73737	1038.9	0.81
185.16570	2760.5	2.16
185.70588	1045.6	0.82
191.08277	3523.2	2.75
192.02124	764.7	0.60
202.19239	4500.4	3.51
202.97798	740.1	0.58
211.01330	1090.9	0.85
211.31424	961.3	0.75
216.35531	741.1	0.58
216.98752	806.9	0.63
231.11338	128076.6	100.00
243.08616	921.0	0.72
259.49683	865.1	0.68
273.96856	803.2	0.63
275.24574	851.1	0.66
292.27286	2215.6	1.73
304.16629	6748.5	5.27
306.48400	913.0	0.71
330.40987	910.6	0.71
334.35714	872.3	0.68
347.20901	1037.8	0.81
355.22959	955.6	0.75

Hcurta#3299-3321 RT: 8.22-8.28 AV: 5

F: FTMS + p ESI d Full ms2 465.32@hcd35.00 [50.00-495.00]

m/z= 50.00000-1000.00000

m/z	Intensity	Relative
366.96988	1023.7	0.80
377.21812	2840.3	2.22
394.24657	21839.7	17.05
421.11607	886.7	0.69
448.29252	24074.2	18.80
465.31967	42487.3	33.17