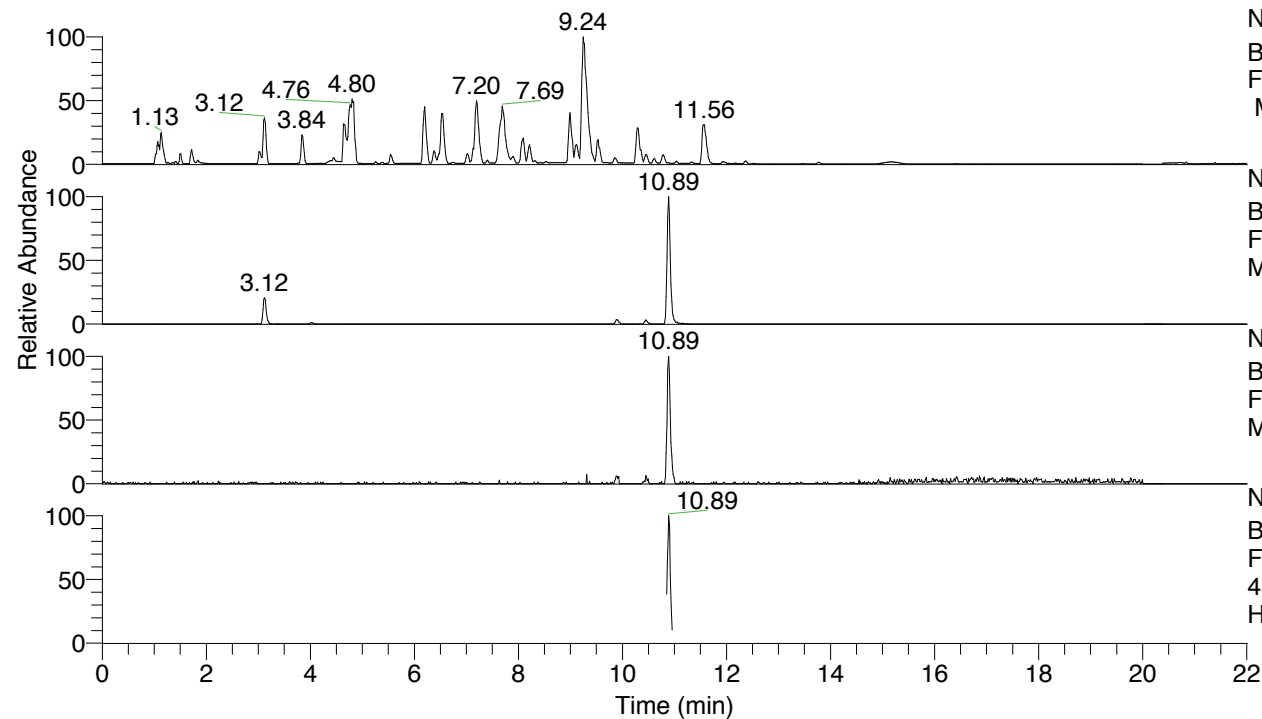


RT: 0.00 - 22.01



NL: 8.52E7
 Base Peak m/z= 100.00000-1500.00000
 F: FTMS + p ESI Full ms [100.00-1500.00]
 MS Hcurta

NL: 1.09E6
 Base Peak m/z= 459.34016-459.34934 F:
 FTMS + p ESI Full ms [100.00-1500.00]
 MS Hcurta

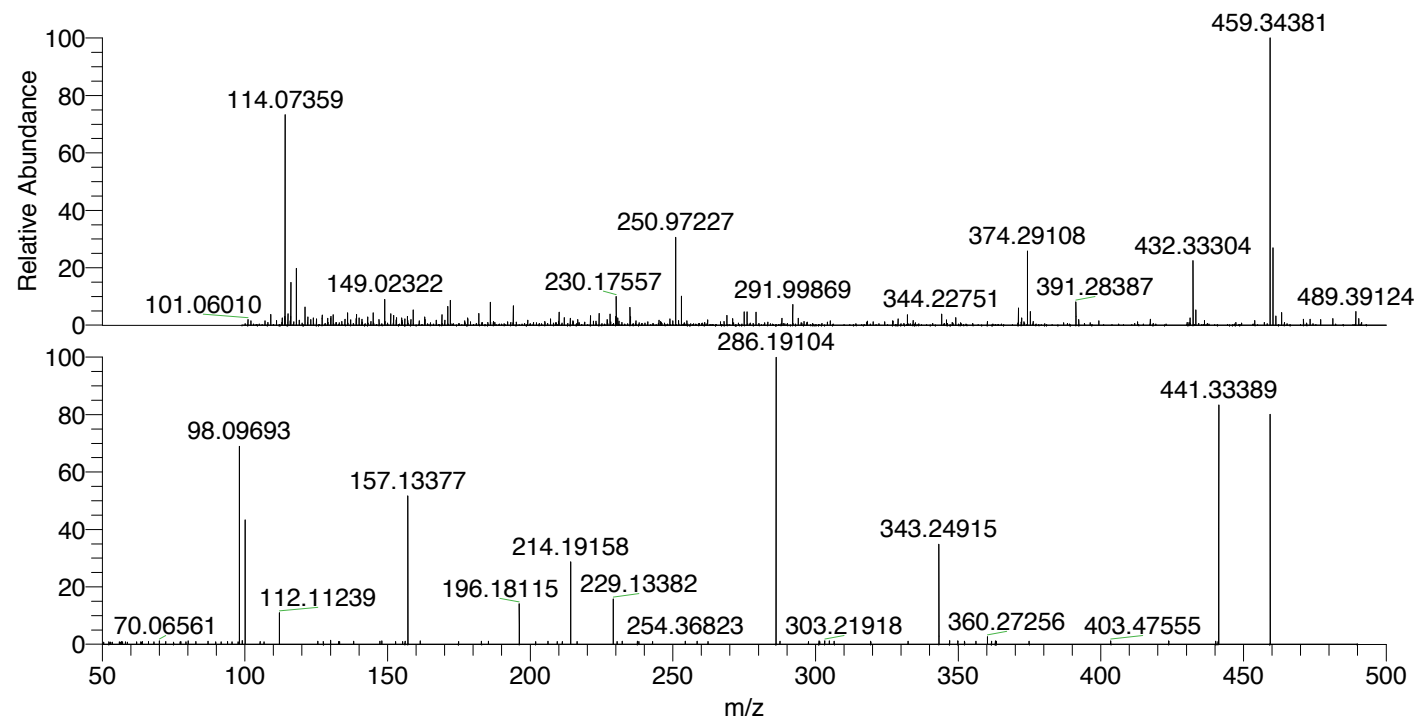
NL: 1.10E5
 Base Peak m/z= 230.17399-230.17859 F:
 FTMS + p ESI Full ms [100.00-1500.00]
 MS Hcurta

NL: 9.27E4
 Base Peak m/z= 50.00000-1500.00000 F:
 FTMS + p ESI d Full ms2
 459.34@hcd35.00 [50.00-485.00] MS
 Hcurta

Hcurta#4355-4397 RT: 10.85-10.96 AV: 8

F: FTMS + p ESI d Full ms2 459.34 ...
 m/z= 50.00000-1000.00000

m/z	Intensity	Relative
66.16115	526.9	1.01
70.06561	630.3	1.21
77.50098	524.9	1.01
80.12099	591.1	1.13
87.08054	536.9	1.03
98.09693	36719.1	70.44
99.09237	666.0	1.28
100.07616	22576.6	43.31
112.11239	5787.6	11.10
125.56201	542.5	1.04
130.06534	730.2	1.40
138.10236	557.0	1.07
147.34414	548.6	1.05
148.03562	599.1	1.15
156.13617	539.5	1.04
157.13377	27144.6	52.07
161.48059	619.7	1.19
174.88046	518.6	0.99
182.93582	559.4	1.07
185.37737	566.7	1.09
196.18115	7358.2	14.12
206.24953	580.1	1.11
214.19158	15199.8	29.16
229.13382	8488.0	16.28
230.49543	521.9	1.00
232.23771	539.6	1.04
237.58541	525.7	1.01
242.87695	520.0	1.00
254.36823	548.2	1.05
258.49852	545.4	1.05
286.19104	52127.9	100.00
287.53918	576.1	1.11
301.20607	589.4	1.13
301.49149	527.5	1.01
303.21918	637.6	1.22
304.82018	614.7	1.18
306.55447	550.9	1.06
319.36526	576.4	1.11
332.42078	568.7	1.09
343.24915	18530.7	35.55
347.00259	672.2	1.29
349.88827	629.4	1.21
352.23684	599.8	1.15
356.22681	569.3	1.09
360.27256	1401.1	2.69
361.68388	563.0	1.08
363.03644	606.3	1.16
363.36736	588.2	1.13
374.86902	531.4	1.02
403.47555	632.2	1.21
423.81488	607.1	1.16
440.28841	577.6	1.11
441.11672	530.4	1.02
441.33389	43475.4	83.40
459.34428	41770.0	80.13



NL: 1.09E6
 Hcurta#4369 RT: 10.89
 AV: 1 T: FTMS + p ESI
 Full lock ms
 [100.00-1500.00]

NL: 5.21E4
 Hcurta#4333-4421 RT:
 10.85-10.96 AV: 8 F:
 FTMS + p ESI d Full ms2
 459.34@hcd35.00
 [50.00-485.00]

Hcurta#4355-4397 RT: 10.85-10.96 AV: 8

F: FTMS + p ESI d Full ms2 459.34@hcd35.00 [50.00-485.00]

m/z= 50.00000-1000.00000

m/z	Intensity	Relative
50.55311	388.5	0.75
52.35527	424.7	0.81
52.77487	386.9	0.74
52.92411	401.1	0.77
53.49085	365.3	0.70
56.00236	434.2	0.83
56.32622	377.3	0.72
56.77524	483.0	0.93
57.11351	425.1	0.82
58.16081	433.7	0.83
58.81769	394.3	0.76
62.07341	410.6	0.79
63.49898	415.0	0.80
63.72998	400.3	0.77
64.09489	512.5	0.98
66.16115	526.9	1.01
66.18645	411.4	0.79
66.26171	420.9	0.81
68.13165	447.3	0.86
70.06561	630.3	1.21
70.07470	452.4	0.87
72.21789	500.9	0.96
75.01770	385.4	0.74
77.32179	416.7	0.80
77.50098	524.9	1.01
77.53629	452.3	0.87
79.31161	416.7	0.80
80.12099	591.1	1.13
82.85749	476.2	0.91
87.08054	536.9	1.03
89.82281	429.9	0.82
91.69939	452.4	0.87
93.96013	485.7	0.93
95.46442	469.6	0.90
97.64206	469.0	0.90
98.09693	36719.1	70.44
99.09237	666.0	1.28
100.07616	22576.6	43.31
105.31723	513.8	0.99

Hcurta#4355-4397 RT: 10.85-10.96 AV: 8

F: FTMS + p ESI d Full ms2 459.34@hcd35.00 [50.00-485.00]

m/z= 50.00000-1000.00000

m/z	Intensity	Relative
106.73172	458.5	0.88
112.11239	5787.6	11.10
125.56201	542.5	1.04
127.51982	489.0	0.94
130.06534	730.2	1.40
132.88930	512.4	0.98
133.21719	508.4	0.98
138.10236	557.0	1.07
147.34414	548.6	1.05
148.03562	599.1	1.15
152.86582	515.9	0.99
155.26118	490.9	0.94
156.13617	539.5	1.04
157.13377	27144.6	52.07
161.48059	619.7	1.19
174.88046	518.6	0.99
182.93582	559.4	1.07
185.37737	566.7	1.09
196.18115	7358.2	14.12
201.90605	467.5	0.90
206.24953	580.1	1.11
209.50042	491.6	0.94
211.23646	488.0	0.94
214.19158	15199.8	29.16
216.44841	501.3	0.96
229.13382	8488.0	16.28
230.49543	521.9	1.00
232.23771	539.6	1.04
237.58541	525.7	1.01
238.08778	518.3	0.99
242.87695	520.0	1.00
254.36823	548.2	1.05
258.49852	545.4	1.05
262.29226	498.1	0.96
286.19104	52127.9	100.00
287.53918	576.1	1.11
297.52238	493.2	0.95
301.20607	589.4	1.13
301.49149	527.5	1.01

Hcurta#4355-4397 RT: 10.85-10.96 AV: 8

F: FTMS + p ESI d Full ms2 459.34@hcd35.00 [50.00-485.00]

m/z= 50.00000-1000.00000

m/z	Intensity	Relative
303.21918	637.6	1.22
304.82018	614.7	1.18
306.55447	550.9	1.06
319.36526	576.4	1.11
332.42078	568.7	1.09
343.24915	18530.7	35.55
347.00259	672.2	1.29
349.88827	629.4	1.21
352.23684	599.8	1.15
356.22681	569.3	1.09
360.27256	1401.1	2.69
361.68388	563.0	1.08
363.03644	606.3	1.16
363.36736	588.2	1.13
374.86902	531.4	1.02
403.47555	632.2	1.21
423.81488	607.1	1.16
440.28841	577.6	1.11
441.11672	530.4	1.02
441.33389	43475.4	83.40
459.34428	41770.0	80.13