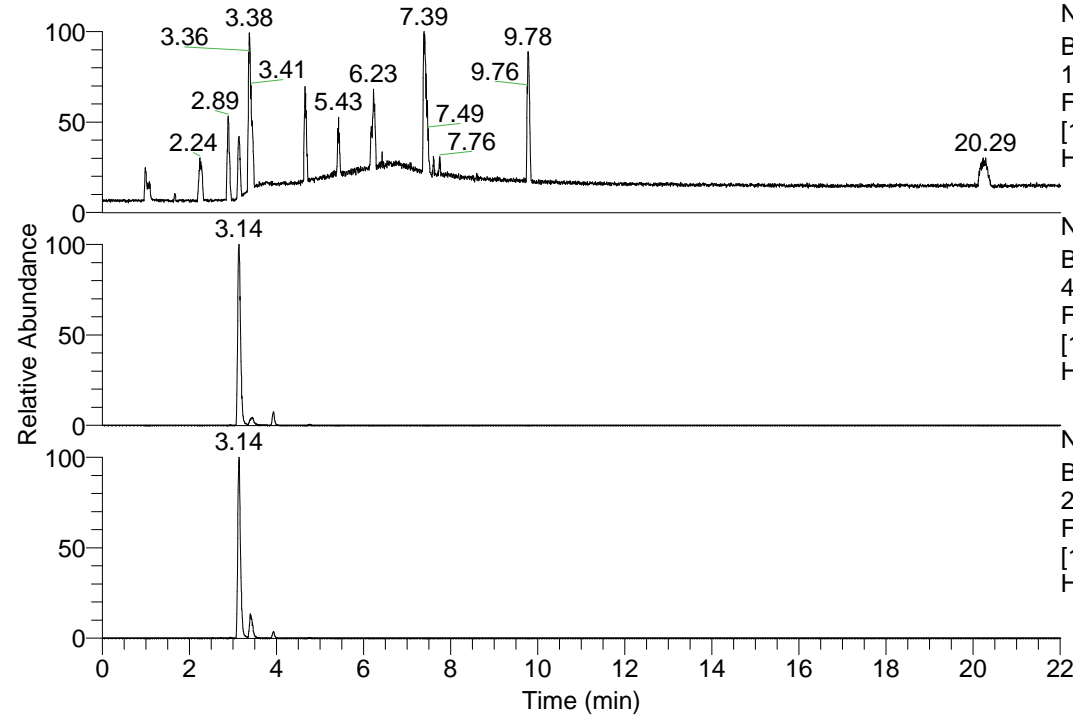


RT: 0.00 - 22.01



NL: 1.13E8
Base Peak m/z=
100.00000-1500.00000 F:
FTMS + p ESI Full ms
[100.00-1500.00] MS
Hcurta_HDX

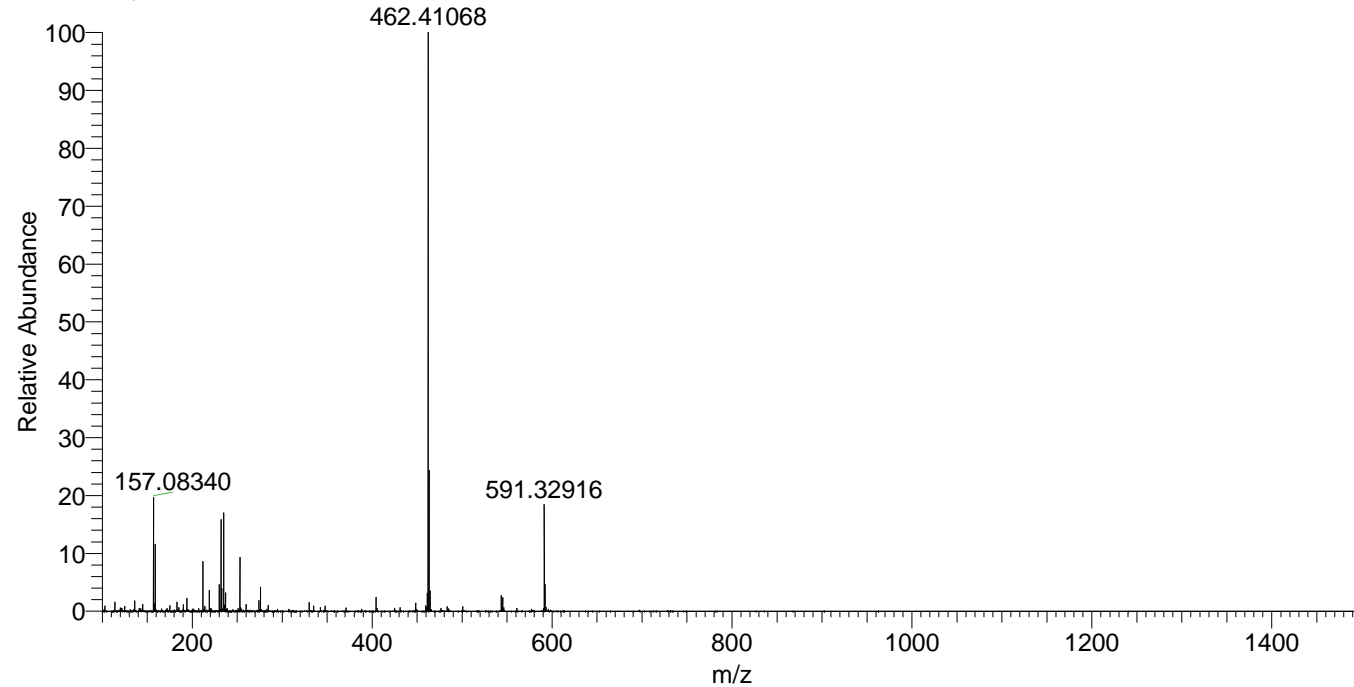
NL: 4.76E7
Base Peak m/z=
462.40950-462.41412 F:
FTMS + p ESI Full ms
[100.00-1500.00] MS
Hcurta_HDX

NL: 7.57E6
Base Peak m/z=
232.21179-232.21411 F:
FTMS + p ESI Full ms
[100.00-1500.00] MS
Hcurta_HDX

Hcurta_HDX#483 RT: 3.14
T: FTMS + p ESI Full ms [100.00-1500.00]
m/z= 462.00000-463.00000

m/z	Intensity	Relative	Delta (ppm)	Composition
462.41068	47570628.0	100.00	-1.26	C ₂₃ H ₃₆ ² H ₉ O ₃ N ₆
			2.09	C ₂₃ H ₃₄ ² H ₁₀ O ₃ N ₆
			-4.61	C ₂₃ H ₃₈ ² H ₈ O ₃ N ₆

Hcurta_HDX #483 RT: 3.14 AV: 1 NL: 4.75E7
T: FTMS + p ESI Full ms [100.00-1500.00]



Hcurta_HDX #483 RT: 3.14 AV: 1 NL: 4.75E7
T: FTMS + p ESI Full ms [100.00-1500.00]

