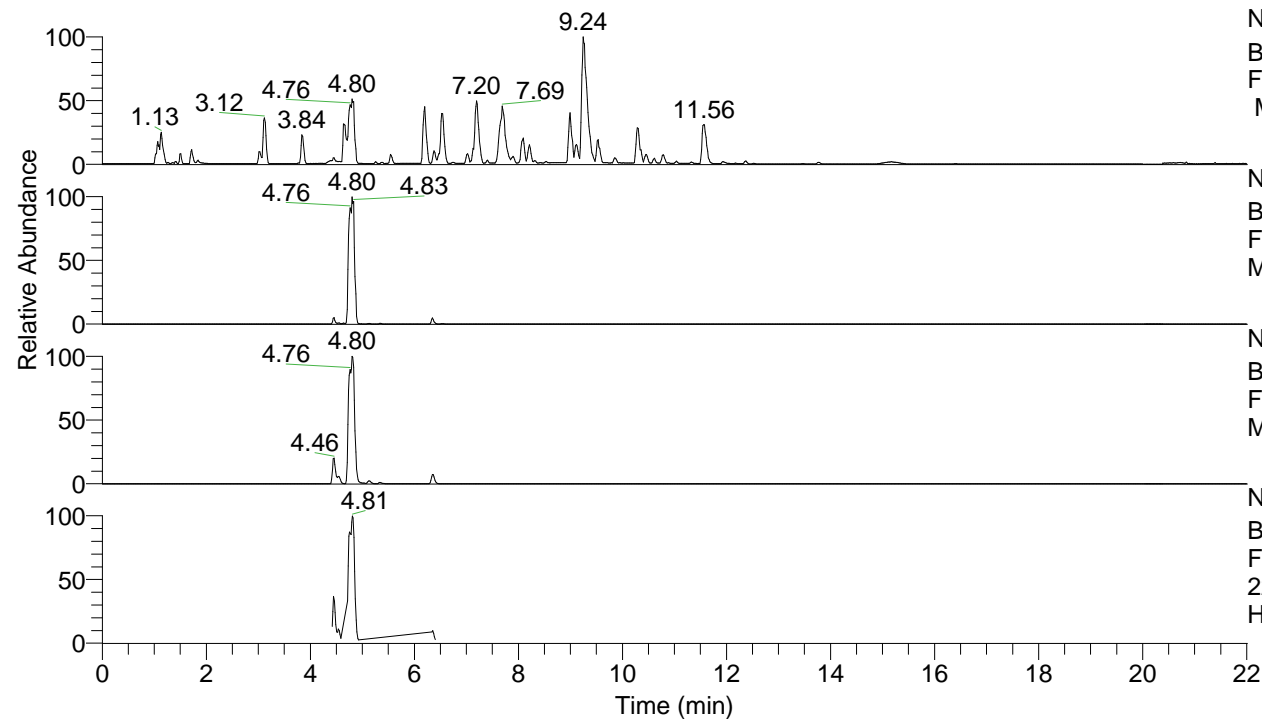


RT: 0.00 - 22.01



NL: 8.52E7
 Base Peak m/z= 100.00000-1500.00000
 F: FTMS + p ESI Full ms [100.00-1500.00]
 MS Hcurta

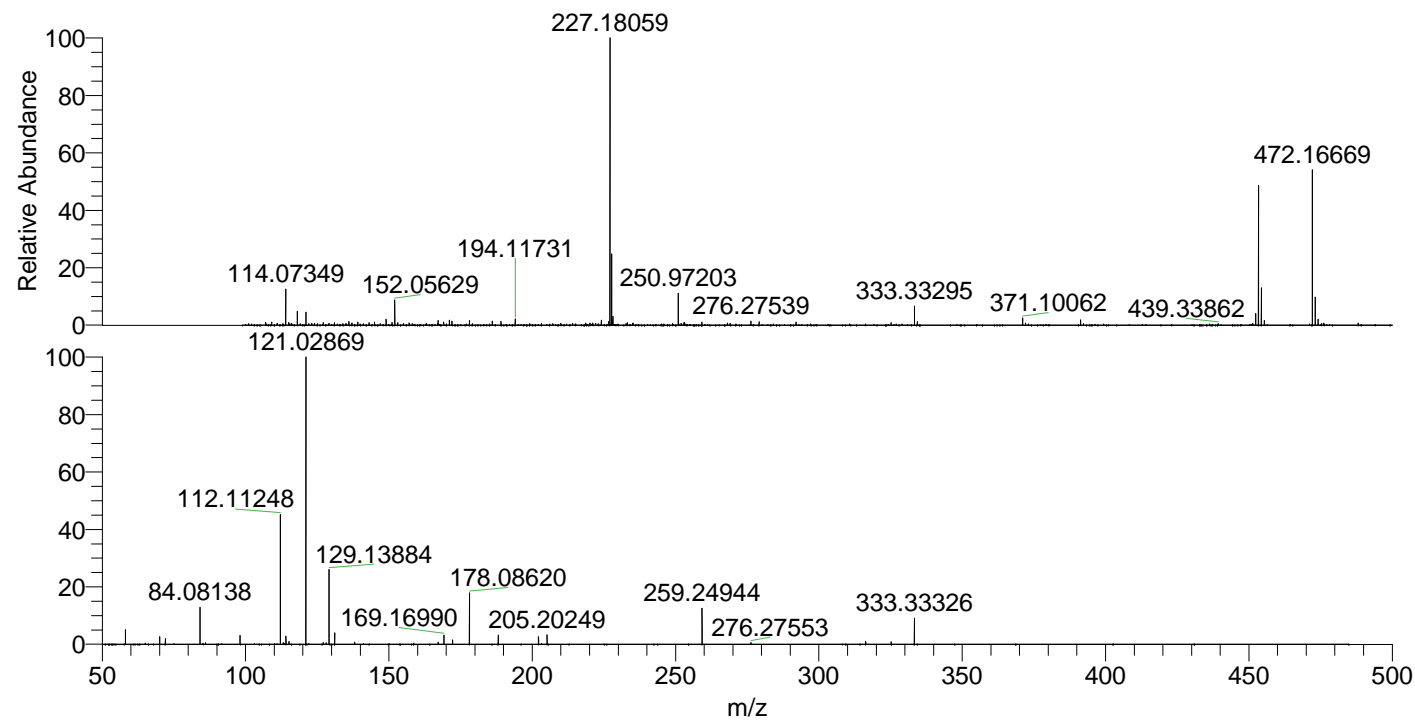
NL: 4.37E7
 Base Peak m/z= 453.35078-453.35984 F:
 FTMS + p ESI Full ms [100.00-1500.00]
 MS Hcurta

NL: 2.19E7
 Base Peak m/z= 227.17930-227.18384 F:
 FTMS + p ESI Full ms [100.00-1500.00]
 MS Hcurta

NL: 3.57E6
 Base Peak m/z= 50.00000-1500.00000 F:
 FTMS + p ESI d Full ms2
 227.18@hcd35.00 [50.00-480.00] MS
 Hcurta

Hcurta#1774-1796 RT: 4.43-4.49 AV: 5
 F: FTMS + p ESI d Full ms2 227.18 ...
 m/z= 50.00000-1000.00000

| m/z | Intensity | Relative |
|-----------|-----------|----------|
| 58.06596 | 44248.9 | 5.04 |
| 70.06588 | 22578.7 | 2.57 |
| 72.08156 | 16736.2 | 1.91 |
| 84.08138 | 111743.4 | 12.73 |
| 98.09702 | 26030.9 | 2.96 |
| 112.11248 | 384565.1 | 43.79 |
| 113.10767 | 4505.5 | 0.51 |
| 114.09171 | 24496.9 | 2.79 |
| 115.12344 | 8516.9 | 0.97 |
| 121.02869 | 878121.3 | 100.00 |
| 127.12345 | 5192.5 | 0.59 |
| 128.10716 | 4603.6 | 0.52 |
| 129.13884 | 225377.9 | 25.67 |
| 131.11800 | 33578.9 | 3.82 |
| 138.05513 | 6185.5 | 0.70 |
| 167.17075 | 6464.6 | 0.74 |
| 169.16990 | 27377.8 | 3.12 |
| 172.18123 | 12802.6 | 1.46 |
| 178.08620 | 152799.5 | 17.40 |
| 188.17575 | 27058.4 | 3.08 |
| 202.19130 | 22183.6 | 2.53 |
| 205.20249 | 27571.6 | 3.14 |
| 259.24944 | 108732.0 | 12.38 |
| 276.27553 | 5699.4 | 0.65 |
| 316.30805 | 9048.5 | 1.03 |
| 325.22374 | 7872.5 | 0.90 |
| 333.33326 | 78451.2 | 8.93 |



NL: 4.32E6
 Hcurta#1783 RT: 4.46
 AV: 1 T: FTMS + p ESI
 Full lock ms
 [100.00-1500.00]

NL: 8.52E5
 Hcurta#1770-1796 RT:
 4.43-4.49 AV: 5 F: FTMS
 + p ESI d Full ms2
 227.18@hcd35.00
 [50.00-480.00]