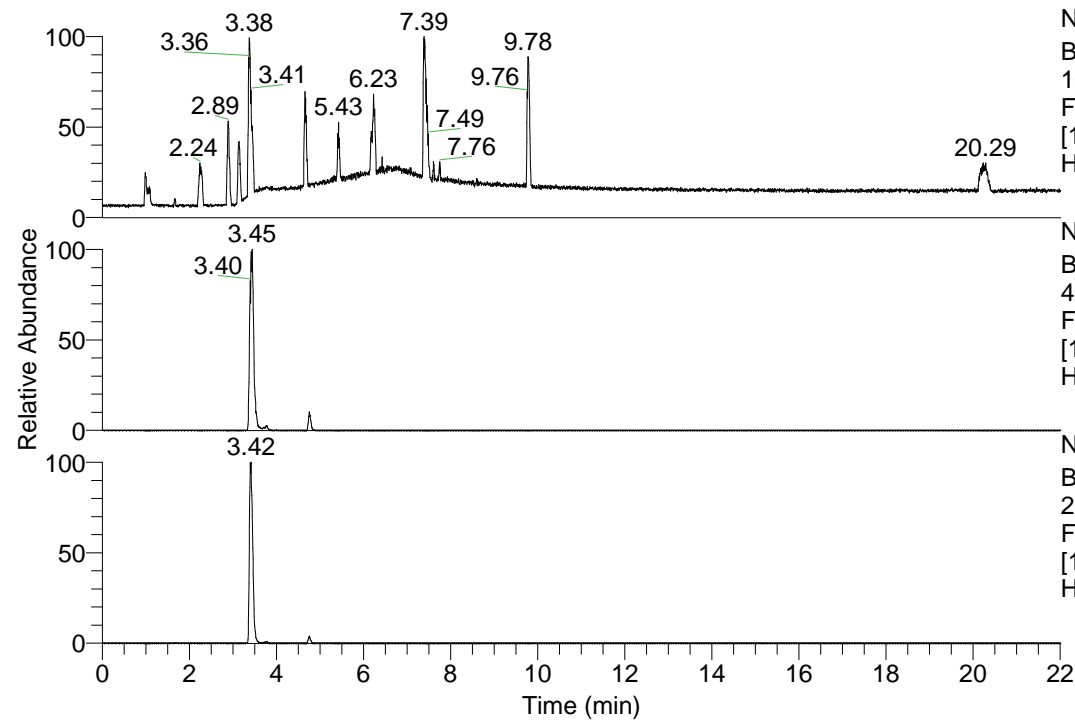


RT: 0.00 - 22.01



NL: 1.13E8  
 Base Peak m/z=  
 100.00000-1500.00000 F:  
 FTMS + p ESI Full ms  
 [100.00-1500.00] MS  
 Hcurta\_HDX

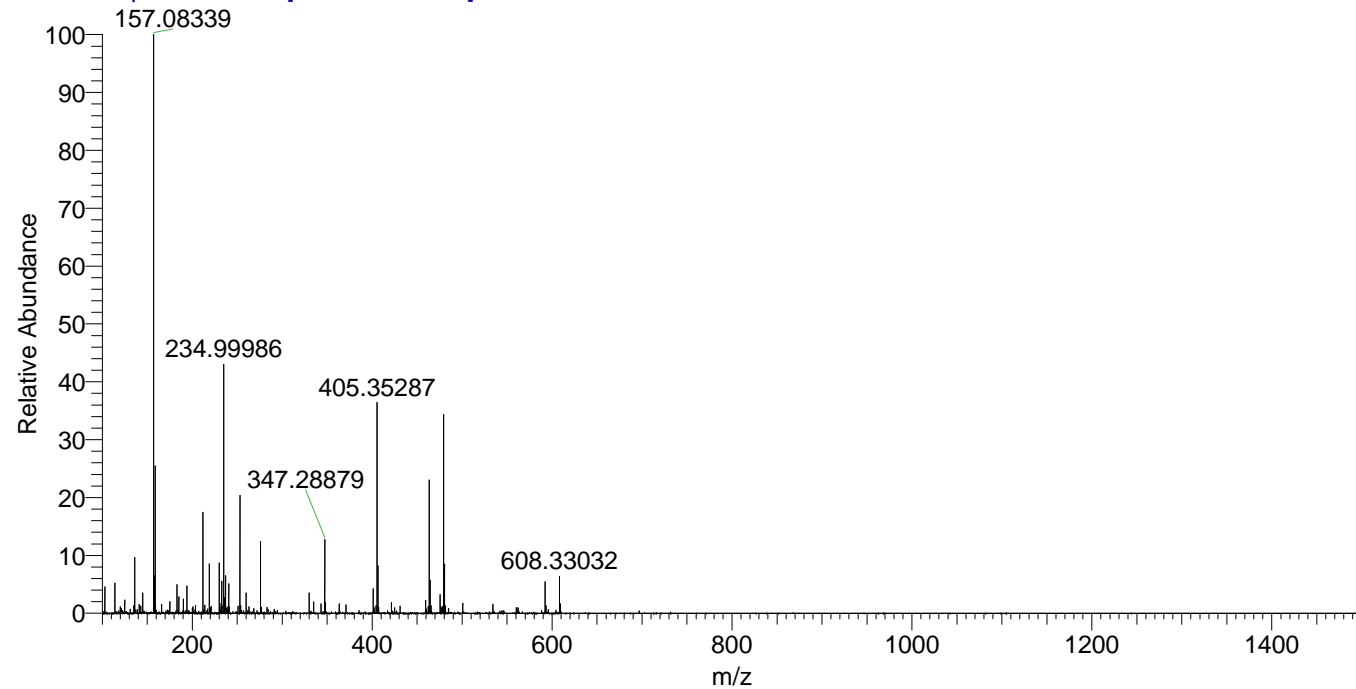
NL: 5.73E7  
 Base Peak m/z=  
 463.41576-463.42040 F:  
 FTMS + p ESI Full ms  
 [100.00-1500.00] MS  
 Hcurta\_HDX

NL: 3.18E7  
 Base Peak m/z=  
 232.71493-232.71725 F:  
 FTMS + p ESI Full ms  
 [100.00-1500.00] MS  
 Hcurta\_HDX

Hcurta\_HDX#748 RT: 4.75  
 T: FTMS + p ESI Full ms [100.00-1500.00]  
 m/z= 463.00000-464.00000

m/z	Intensity	Relative	Delta (ppm)	Composition
463.41693	4397264.0	100.00	-1.30	C <sub>23</sub> H <sub>35</sub> <sup>2</sup> H <sub>10</sub> O <sub>3</sub> N <sub>6</sub>
			2.04	C <sub>23</sub> H <sub>33</sub> <sup>2</sup> H <sub>11</sub> O <sub>3</sub> N <sub>6</sub>
			-4.64	C <sub>23</sub> H <sub>37</sub> <sup>2</sup> H <sub>9</sub> O <sub>3</sub> N <sub>6</sub>

Hcurta\_HDX #748 RT: 4.75 AV: 1 NL: 1.91E7  
 T: FTMS + p ESI Full ms [100.00-1500.00]



Hcurta\_HDX #748 RT: 4.75 AV: 1 NL: 4.39E6  
 T: FTMS + p ESI Full ms [100.00-1500.00]

