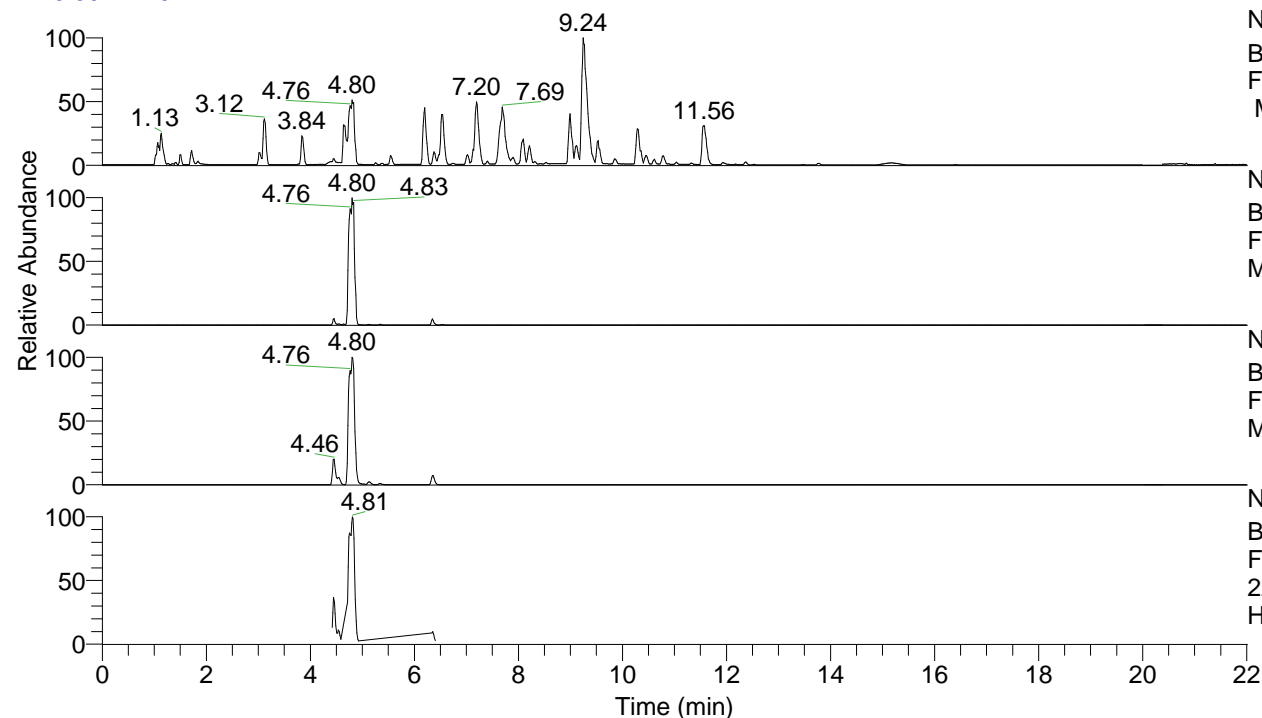


RT: 0.00 - 22.01



NL: 8.52E7
 Base Peak m/z= 100.00000-1500.00000
 F: FTMS + p ESI Full ms [100.00-1500.00]
 MS Hcurta

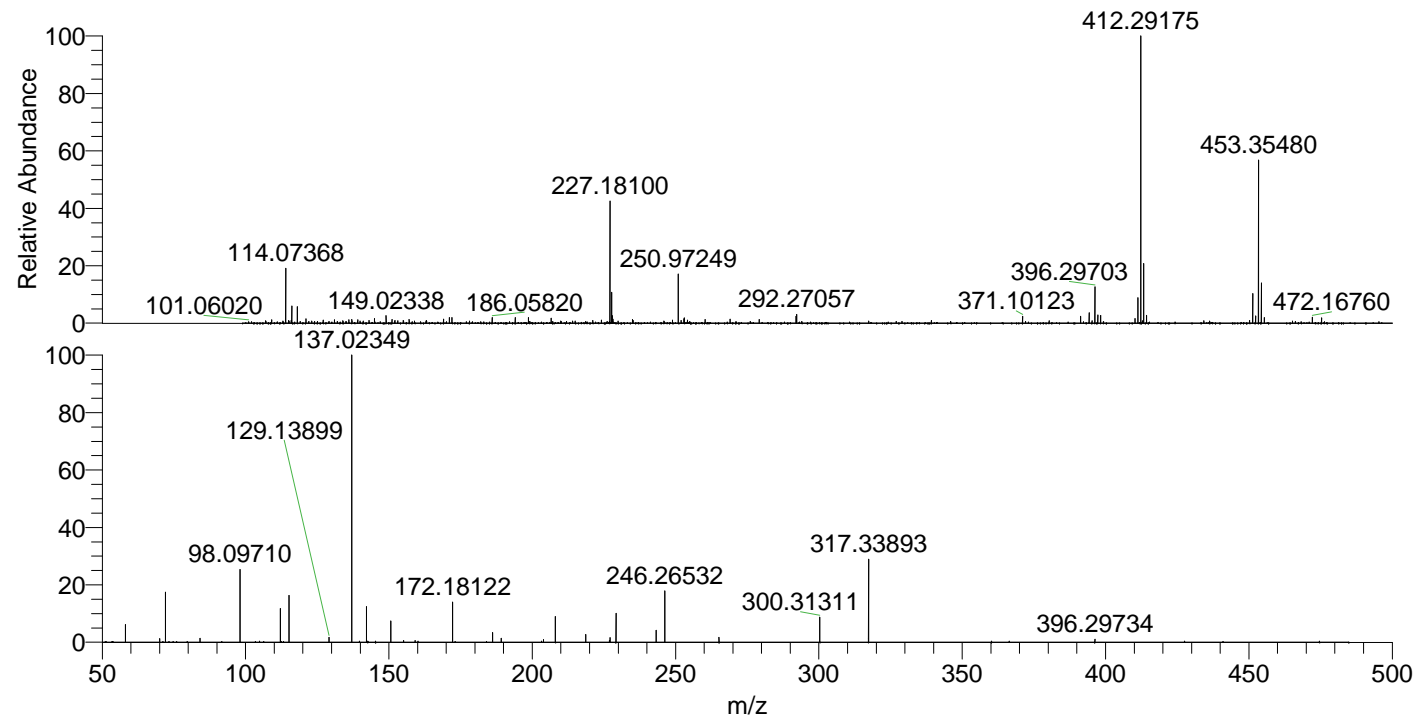
NL: 4.37E7
 Base Peak m/z= 453.35078-453.35984 F:
 FTMS + p ESI Full ms [100.00-1500.00]
 MS Hcurta

NL: 2.19E7
 Base Peak m/z= 227.17930-227.18384 F:
 FTMS + p ESI Full ms [100.00-1500.00]
 MS Hcurta

NL: 3.57E6
 Base Peak m/z= 50.00000-1500.00000 F:
 FTMS + p ESI d Full ms2
 227.18@hcd35.00 [50.00-480.00] MS
 Hcurta

Hcurta#2543-2554 RT: 6.34-6.37 AV: 3
 F: FTMS + p ESI d Full ms2 227.18 ...
 m/z= 50.00000-1000.00000

m/z	Intensity	Relative
58.06610	18850.8	6.28
70.06603	3883.6	1.29
72.08168	52612.5	17.53
84.08163	4106.3	1.37
98.09710	77013.2	25.65
112.11262	35291.7	11.76
115.12351	48842.9	16.27
129.13899	5436.6	1.81
137.02349	300201.4	100.00
142.14666	38111.3	12.70
150.65998	22328.9	7.44
155.15427	1737.6	0.58
159.17307	1720.5	0.57
172.18122	42052.9	14.01
186.19687	10186.2	3.39
189.20789	4174.1	1.39
203.93975	2748.7	0.92
208.09694	26641.9	8.87
218.66836	8514.8	2.84
226.95382	1718.8	0.57
227.18133	4715.8	1.57
229.23875	30293.7	10.09
243.25469	12576.8	4.19
246.26532	53464.4	17.81
265.15515	5072.0	1.69
300.31311	26733.2	8.91
317.33893	86367.2	28.77
396.29734	3174.4	1.06



NL: 3.67E6
 Hcurta#2545 RT: 6.35
 AV: 1 T: FTMS + p ESI
 Full lock ms
 [100.00-1500.00]

NL: 2.98E5
 Hcurta#2540-2558 RT:
 6.34-6.37 AV: 3 F: FTMS
 + p ESI d Full ms2
 227.18@hcd35.00
 [50.00-480.00]