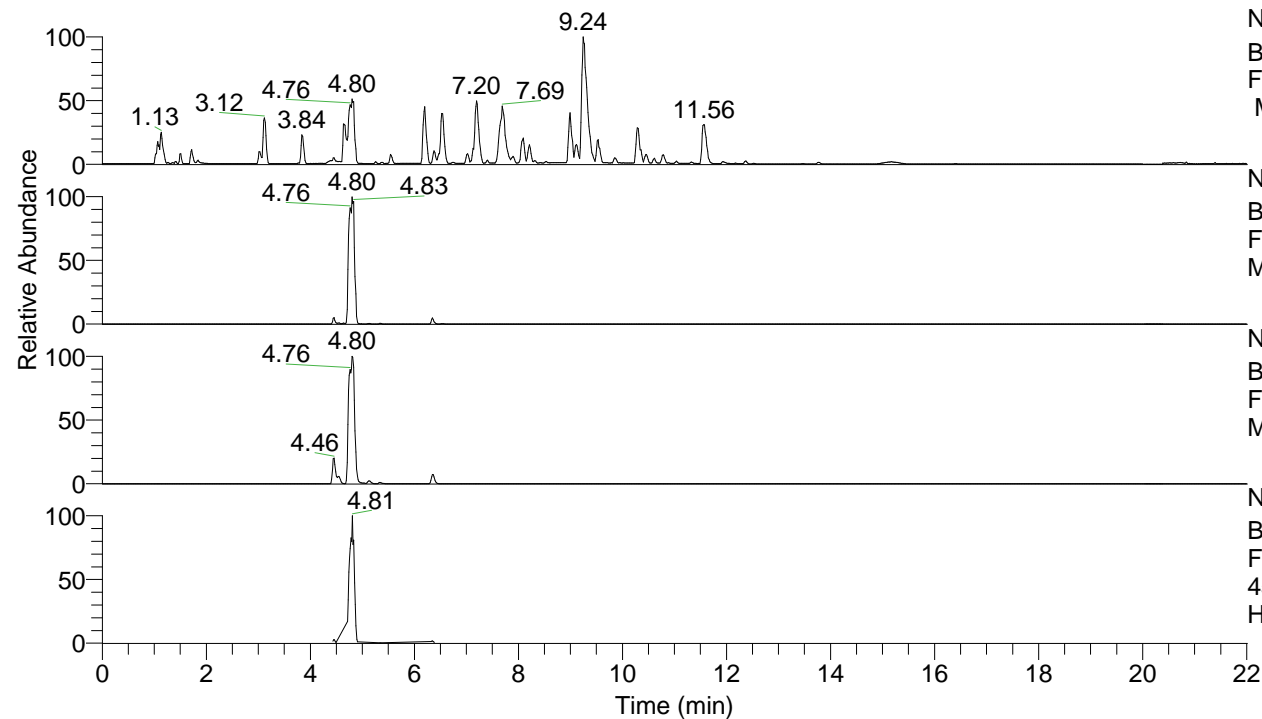


RT: 0.00 - 22.01



NL: 8.52E7
 Base Peak m/z= 100.00000-1500.00000
 F: FTMS + p ESI Full ms [100.00-1500.00]
 MS Hcurta

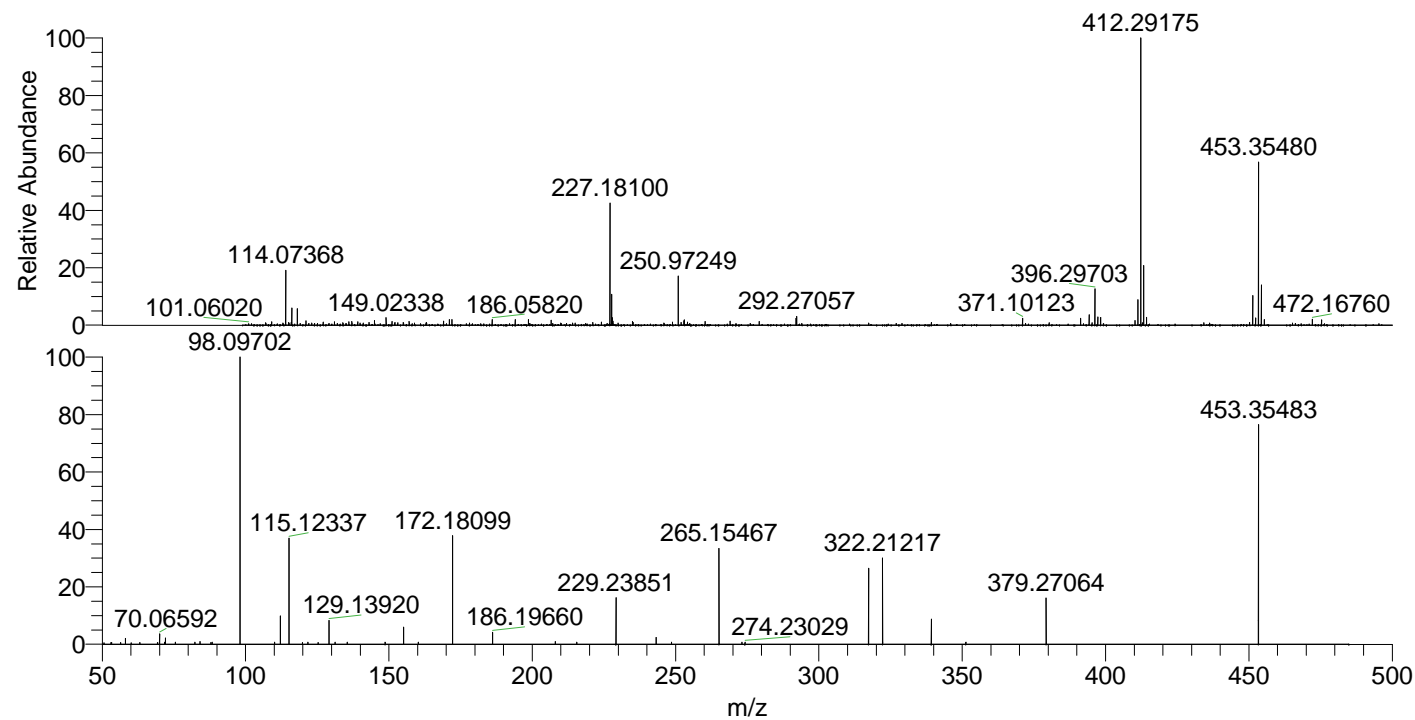
NL: 4.37E7
 Base Peak m/z= 453.35078-453.35984 F:
 FTMS + p ESI Full ms [100.00-1500.00]
 MS Hcurta

NL: 2.19E7
 Base Peak m/z= 227.17930-227.18384 F:
 FTMS + p ESI Full ms [100.00-1500.00]
 MS Hcurta

NL: 1.32E7
 Base Peak m/z= 50.00000-1500.00000 F:
 FTMS + p ESI d Full ms2
 453.35@hcd35.00 [50.00-480.00] MS
 Hcurta

Hcurta#2537-2546 RT: 6.33-6.35 AV: 3
 F: FTMS + p ESI d Full ms2 453.35 ...
 m/z= 50.00000-1000.00000

m/z	Intensity	Relative
50.64070	980.2	0.50
53.11326	1163.6	0.60
53.24022	1081.3	0.56
56.40177	1209.1	0.62
58.06608	3964.5	2.04
60.10433	1057.4	0.54
63.12634	1132.7	0.58
69.21300	1198.2	0.62
69.88797	1212.9	0.62
70.06592	6801.9	3.50
71.70869	1282.8	0.66
72.08149	4370.0	2.25
75.50698	1248.5	0.64
75.53917	1326.1	0.68
82.30411	1444.0	0.74
84.08163	1888.4	0.97
87.89613	1113.0	0.57
88.34940	1428.1	0.73
98.09702	194360.8	100.00
110.08460	1303.5	0.67
112.11262	18847.1	9.70
115.12337	70867.1	36.46
119.82506	1230.4	0.63
121.74280	1310.8	0.67
125.35357	1181.6	0.61
129.13920	15901.0	8.18
131.25836	1314.0	0.68
135.47105	1315.1	0.68
148.70878	1393.0	0.72
155.15453	11610.2	5.97
160.30274	1304.8	0.67
172.18099	73033.8	37.58
186.19660	7934.4	4.08
208.09730	1857.0	0.96
215.50576	1397.6	0.72
229.23851	31080.3	15.99
243.25499	4566.2	2.35
248.62197	1461.3	0.75
265.15467	63991.0	32.92
273.15730	1390.2	0.72
274.23029	1410.4	0.73
317.33881	50413.0	25.94
322.21217	57858.7	29.77
339.24108	16708.1	8.60
351.27125	1479.2	0.76
379.27064	30607.5	15.75
453.35483	147980.2	76.14



NL: 3.67E6
 Hcurta#2545 RT: 6.35
 AV: 1 T: FTMS + p ESI
 Full lock ms
 [100.00-1500.00]

NL: 1.90E5
 Hcurta#2537-2551 RT:
 6.33-6.35 AV: 3 F: FTMS
 + p ESI d Full ms2
 453.35@hcd35.00
 [50.00-480.00]