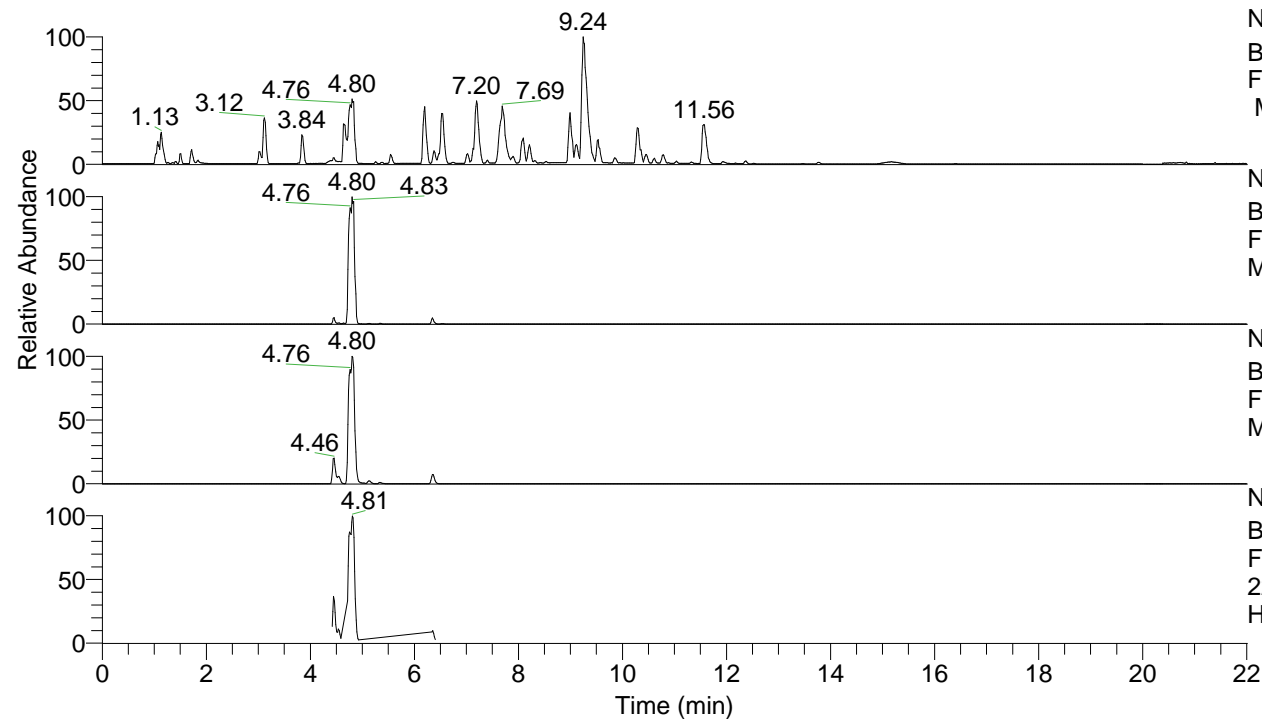


RT: 0.00 - 22.01



NL: 8.52E7  
 Base Peak m/z= 100.00000-1500.00000  
 F: FTMS + p ESI Full ms [100.00-1500.00]  
 MS Hcurta

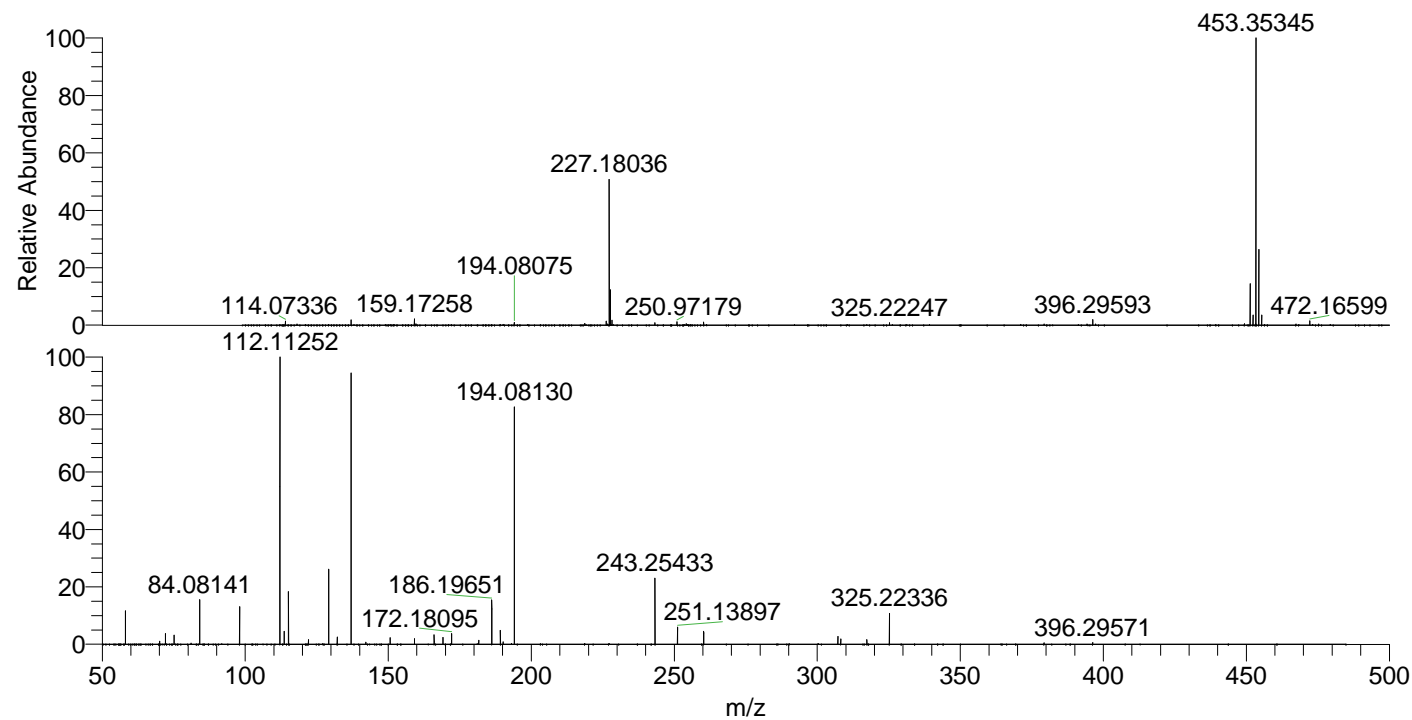
NL: 4.37E7  
 Base Peak m/z= 453.35078-453.35984 F:  
 FTMS + p ESI Full ms [100.00-1500.00]  
 MS Hcurta

NL: 2.19E7  
 Base Peak m/z= 227.17930-227.18384 F:  
 FTMS + p ESI Full ms [100.00-1500.00]  
 MS Hcurta

NL: 3.57E6  
 Base Peak m/z= 50.00000-1500.00000 F:  
 FTMS + p ESI d Full ms2  
 227.18@hcd35.00 [50.00-480.00] MS  
 Hcurta

Hcurta#1889-1959 RT: 4.72-4.88 AV: 13  
 F: FTMS + p ESI d Full ms2 227.18@h ...  
 m/z= 50.00000-1000.00000

m/z	Intensity	Relative
58.06600	276262.6	11.71
70.06593	24577.9	1.04
72.08160	89007.5	3.77
75.09245	74112.6	3.14
84.08141	365961.4	15.51
98.09697	317245.9	13.45
112.11253	2359096.8	100.00
113.61790	108598.5	4.60
115.12338	433203.0	18.36
122.13104	38392.7	1.63
129.13879	633313.2	26.85
132.14957	58885.0	2.50
137.02337	2222791.8	94.22
142.14662	15920.2	0.67
150.65966	54536.2	2.31
159.17309	45326.4	1.92
166.04982	80105.3	3.40
169.17004	56714.8	2.40
172.18097	87860.9	3.72
181.62558	33690.8	1.43
186.19652	361634.3	15.33
189.20730	115086.4	4.88
190.13896	19297.5	0.82
194.08131	1943029.5	82.36
243.25434	539817.3	22.88
251.13898	140786.0	5.97
260.28081	106203.3	4.50
307.21236	63044.6	2.67
308.19650	44748.7	1.90
317.33848	36952.1	1.57
325.22337	254695.6	10.80
379.27012	11868.7	0.50
396.29571	14181.2	0.60



NL: 4.22E7  
 Hcurta#1927 RT: 4.80  
 AV: 1 T: FTMS + p ESI  
 Full ms [100.00-1500.00]

NL: 2.49E6  
 Hcurta#1888-1956 RT:  
 4.72-4.87 AV: 12 F:  
 FTMS + p ESI d Full ms2  
 227.18@hcd35.00  
 [50.00-480.00]