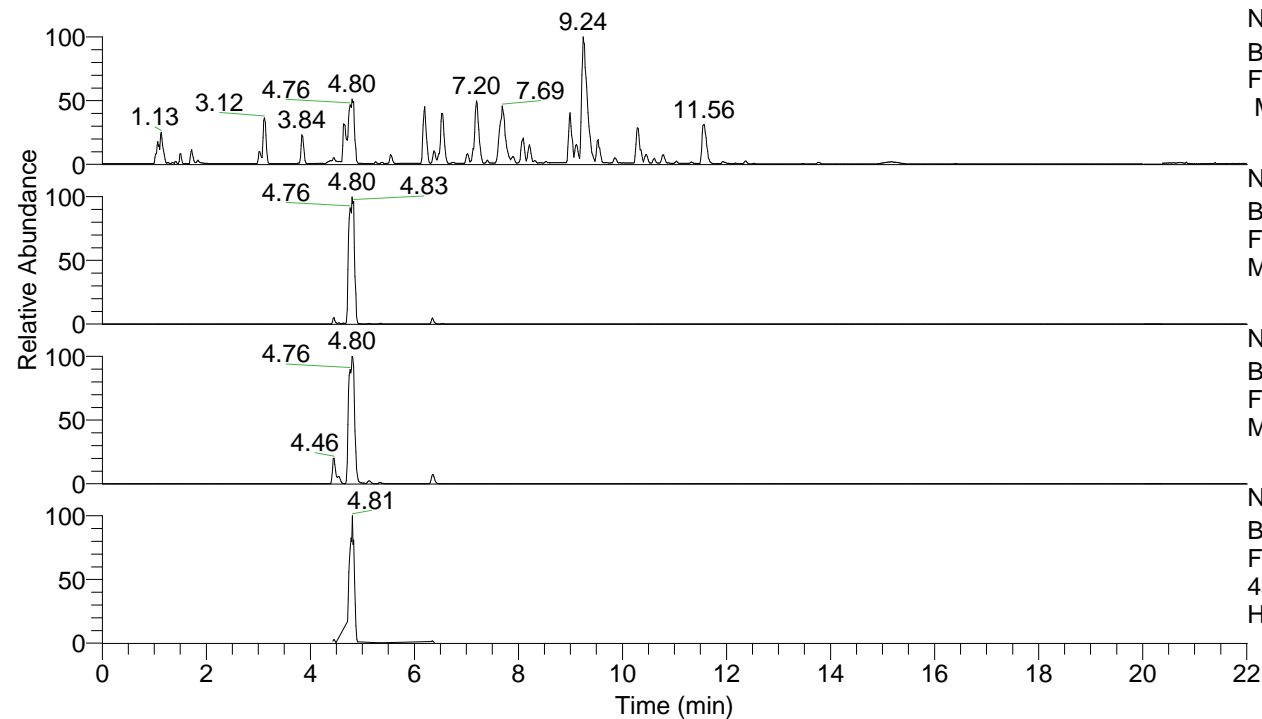


RT: 0.00 - 22.01



NL: 8.52E7  
 Base Peak m/z= 100.00000-1500.00000  
 F: FTMS + p ESI Full ms [100.00-1500.00]  
 MS Hcurta

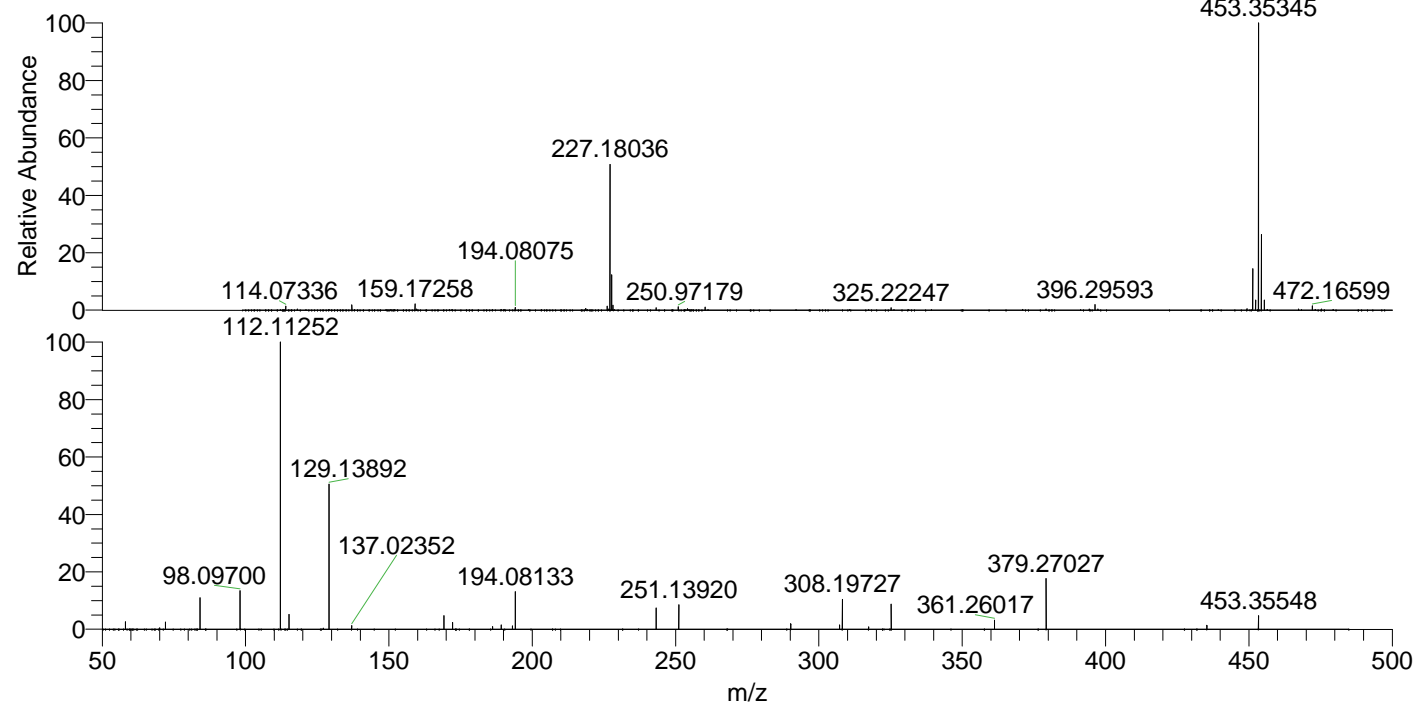
NL: 4.37E7  
 Base Peak m/z= 453.35078-453.35984 F:  
 FTMS + p ESI Full ms [100.00-1500.00]  
 MS Hcurta

NL: 2.19E7  
 Base Peak m/z= 227.17930-227.18384 F:  
 FTMS + p ESI Full ms [100.00-1500.00]  
 MS Hcurta

NL: 1.32E7  
 Base Peak m/z= 50.00000-1500.00000 F:  
 FTMS + p ESI d Full ms2  
 453.35@hcd35.00 [50.00-480.00] MS  
 Hcurta

Hcurta#1898-1952 RT: 4.74-4.86 AV: 10  
 F: FTMS + p ESI d Full ms2 453.35@h ...  
 m/z= 50.00000-1000.00000

m/z	Intensity	Relative
58.06598	235615.2	2.70
72.08157	216179.3	2.48
84.08142	983838.6	11.29
98.09700	1173866.8	13.47
112.11252	8716394.0	100.00
115.12335	442869.0	5.08
129.13892	4409721.5	50.59
137.02353	112457.5	1.29
169.17017	415750.7	4.77
172.18096	201802.2	2.32
186.19681	85834.7	0.98
189.20763	129858.2	1.49
193.09740	100170.8	1.15
194.08133	1158627.1	13.29
243.25469	653151.1	7.49
251.13921	757318.6	8.69
290.18626	172601.5	1.98
307.21333	130690.8	1.50
308.19724	898405.2	10.31
317.33878	71415.9	0.82
325.22380	764371.6	8.77
361.25998	279888.2	3.21
379.27027	1554797.9	17.84
435.34376	115817.7	1.33
453.35546	416643.5	4.78



NL: 4.22E7  
 Hcurta#1927 RT: 4.80  
 AV: 1 T: FTMS + p ESI  
 Full ms [100.00-1500.00]

NL: 8.88E6  
 Hcurta#1900-1953 RT:  
 4.75-4.86 AV: 9 F: FTMS  
 + p ESI d Full ms2  
 453.35@hcd35.00  
 [50.00-480.00]