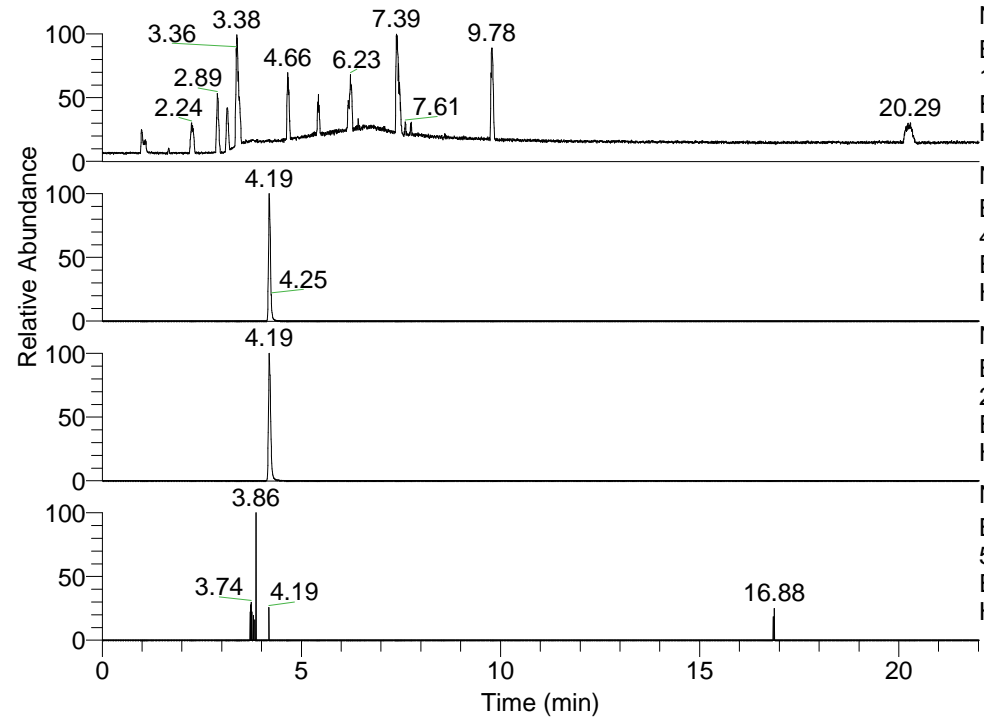


RT: 0.00 - 22.01



NL: 1.13E8  
 Base Peak m/z=  
 100.00000-1500.00000 F: FTMS + p  
 ESI Full ms [100.00-1500.00] MS  
 Hcurta\_HDX

NL: 5.31E6  
 Base Peak m/z=  
 458.39544-458.40002 F: FTMS + p  
 ESI Full ms [100.00-1500.00] MS  
 Hcurta\_HDX

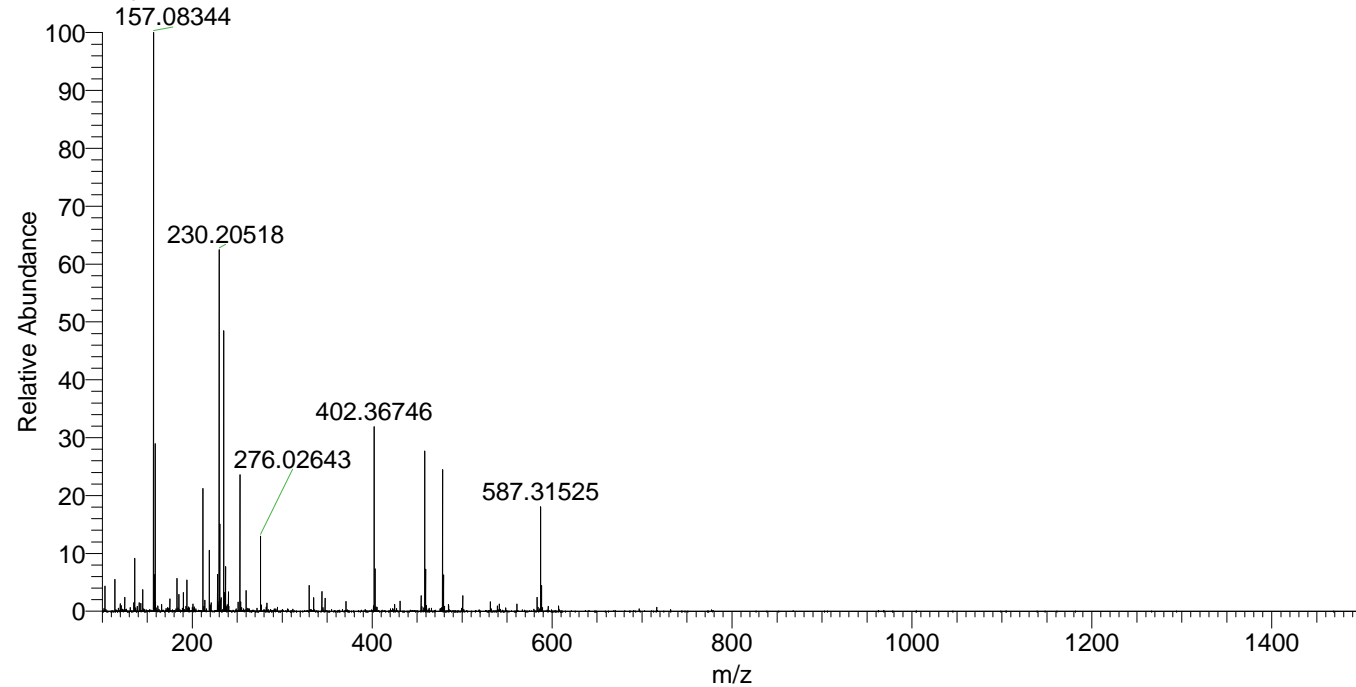
NL: 1.18E7  
 Base Peak m/z=  
 230.20476-230.20706 F: FTMS + p  
 ESI Full ms [100.00-1500.00] MS  
 Hcurta\_HDX

NL: 1.85E4  
 Base Peak m/z=  
 573.39400-573.39974 F: FTMS + p  
 ESI Full ms [100.00-1500.00] MS  
 Hcurta\_HDX

Hcurta\_HDX#656 RT: 4.19  
 T: FTMS + p ESI Full ms [100.00-1500.00]  
 m/z= 458.00000-459.00000

m/z	Intensity	Relative	Delta (ppm)	Composition
458.39676	5308356.0	100.00	-0.91	C <sub>24</sub> H <sub>40</sub> <sup>2</sup> H <sub>6</sub> O <sub>3</sub> N <sub>5</sub>
			2.47	C <sub>24</sub> H <sub>38</sub> <sup>2</sup> H <sub>7</sub> O <sub>3</sub> N <sub>5</sub>
			-4.29	C <sub>24</sub> H <sub>42</sub> <sup>2</sup> H <sub>5</sub> O <sub>3</sub> N <sub>5</sub>

Hcurta\_HDX #656 RT: 4.19 AV: 1 NL: 1.88E7  
 T: FTMS + p ESI Full ms [100.00-1500.00]



Hcurta\_HDX #656 RT: 4.19 AV: 1 NL: 5.21E6  
 T: FTMS + p ESI Full ms [100.00-1500.00]

