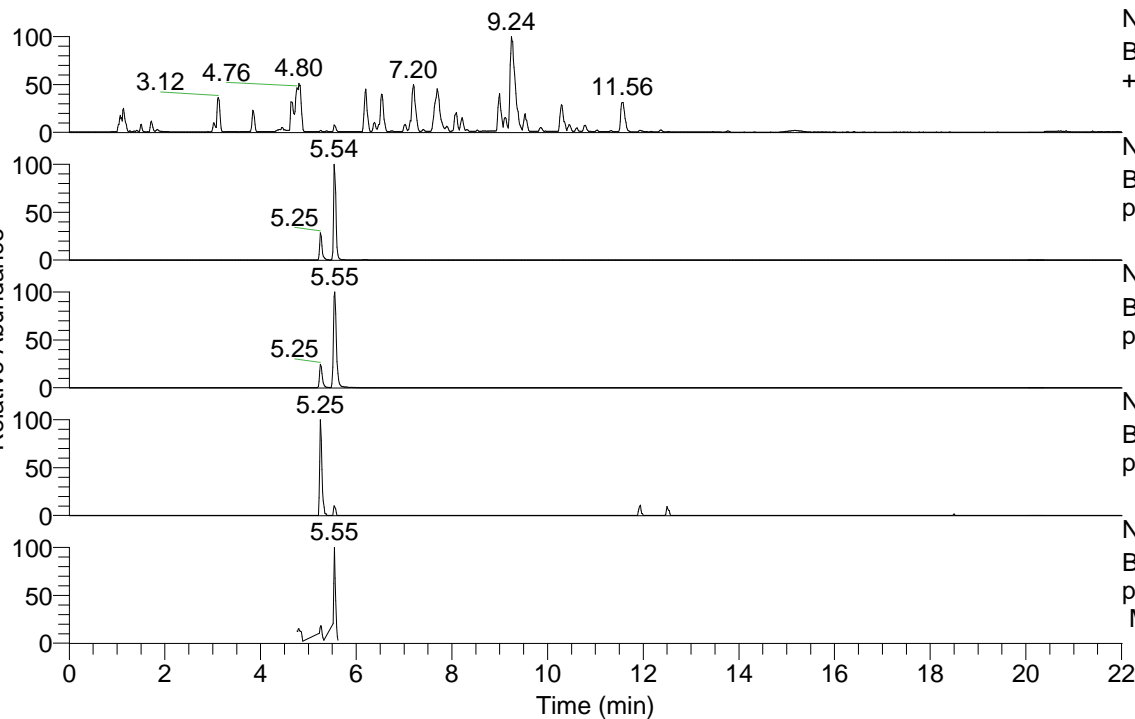


RT: 0.00 - 22.01



NL: 8.52E7  
 Base Peak m/z= 100.00000-1500.00000 F: FTMS + p ESI Full ms [100.00-1500.00] MS Hcurta

NL: 6.67E6  
 Base Peak m/z= 452.35555-452.36459 F: FTMS + p ESI Full ms [100.00-1500.00] MS Hcurta

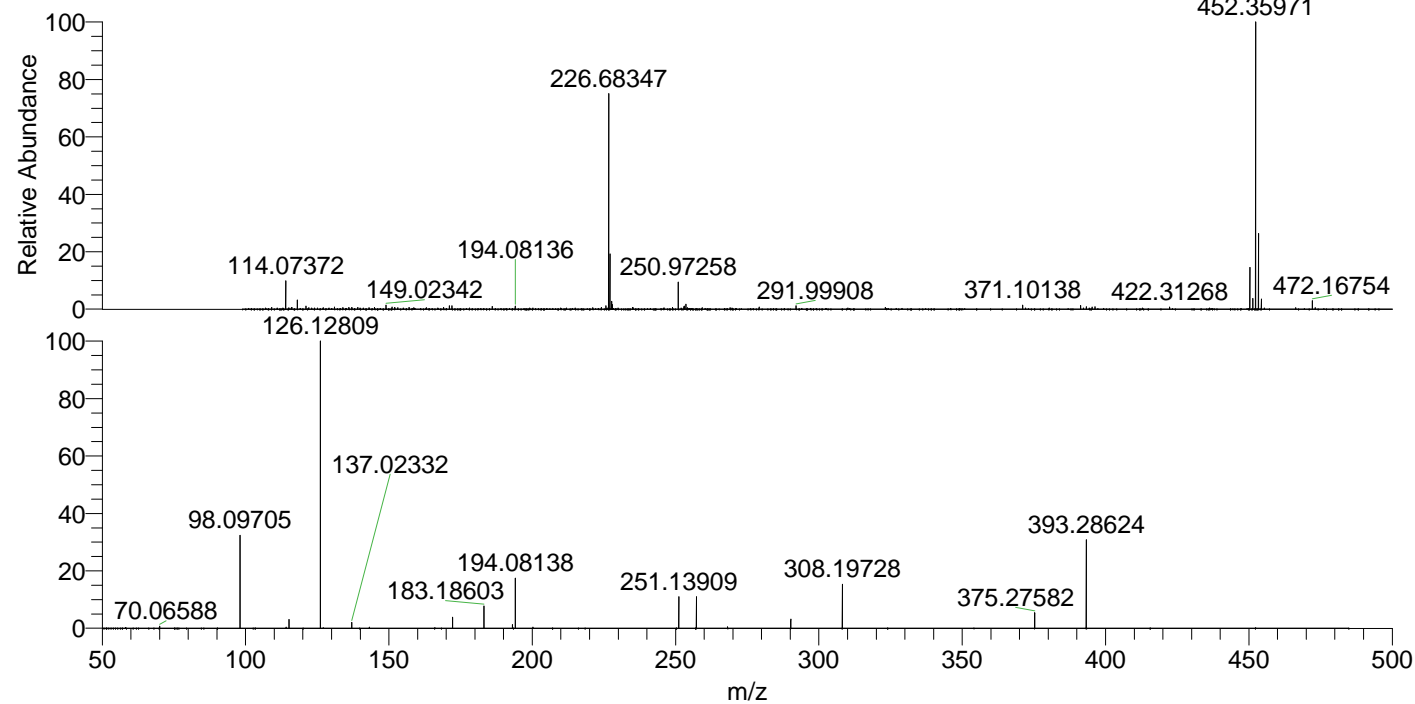
NL: 5.28E6  
 Base Peak m/z= 226.68168-226.68622 F: FTMS + p ESI Full ms [100.00-1500.00] MS Hcurta

NL: 9.33E4  
 Base Peak m/z= 566.34727-566.35859 F: FTMS + p ESI Full ms [100.00-1500.00] MS Hcurta

NL: 2.50E6  
 Base Peak m/z= 50.00000-1500.00000 F: FTMS + p ESI d Full ms2 452.34@hcd35.00 [50.00-480.00] MS Hcurta

Hcurta#2213-2240 RT: 5.52-5.59 AV: 6  
 F: FTMS + p ESI d Full ms2 452.34@h ...  
 m/z= 50.00000-1000.00000

m/z	Intensity	Relative
70.06588	9056.2	0.75
98.09705	377117.8	31.27
115.12346	35304.9	2.93
126.12809	1205939.3	100.00
137.02332	24764.0	2.05
172.18098	45248.0	3.75
183.18603	90799.2	7.53
193.09764	14658.1	1.22
194.08138	204496.6	16.96
251.13909	129123.4	10.71
257.27012	127199.3	10.55
290.18650	36697.8	3.04
308.19728	180421.0	14.96
375.27582	64855.9	5.38
393.28624	369662.3	30.65



NL: 6.66E6  
 Hcurta#2221 RT: 5.54  
 AV: 1 T: FTMS + p ESI  
 Full lock ms  
 [100.00-1500.00]

NL: 1.16E6  
 Hcurta#2212-2240 RT:  
 5.52-5.59 AV: 6 F: FTMS  
 + p ESI d Full ms2  
 452.34@hcd35.00  
 [50.00-480.00]