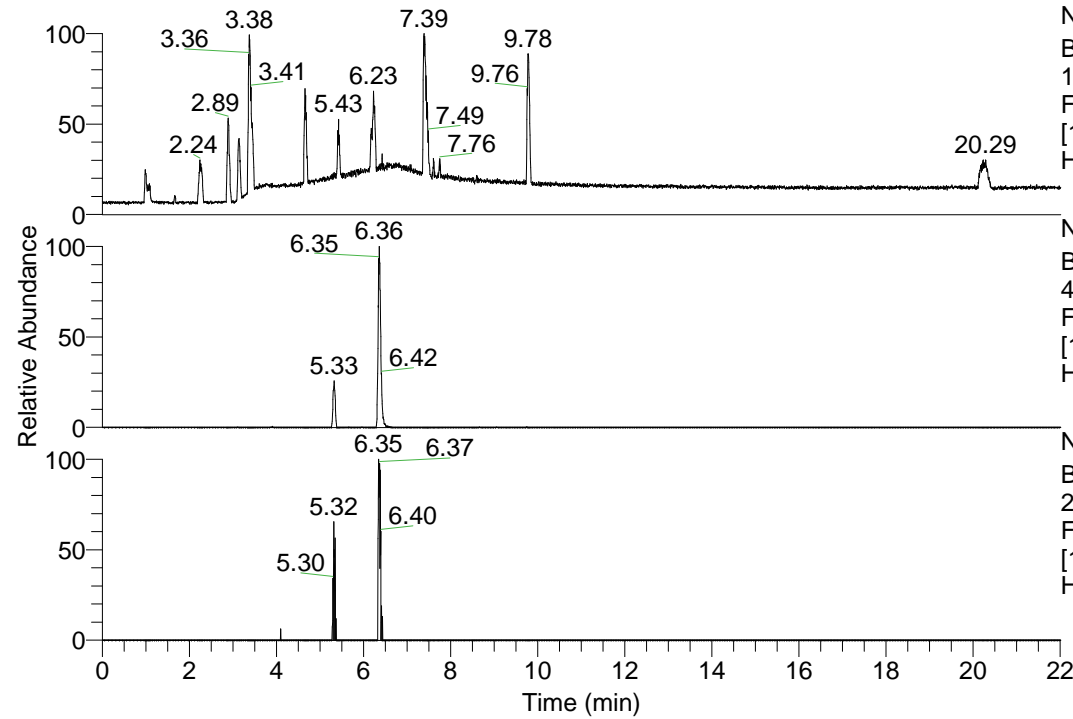


RT: 0.00 - 22.01



NL: 1.13E8
 Base Peak m/z=
 100.00000-1500.00000 F:
 FTMS + p ESI Full ms
 [100.00-1500.00] MS
 Hcurta_HDX

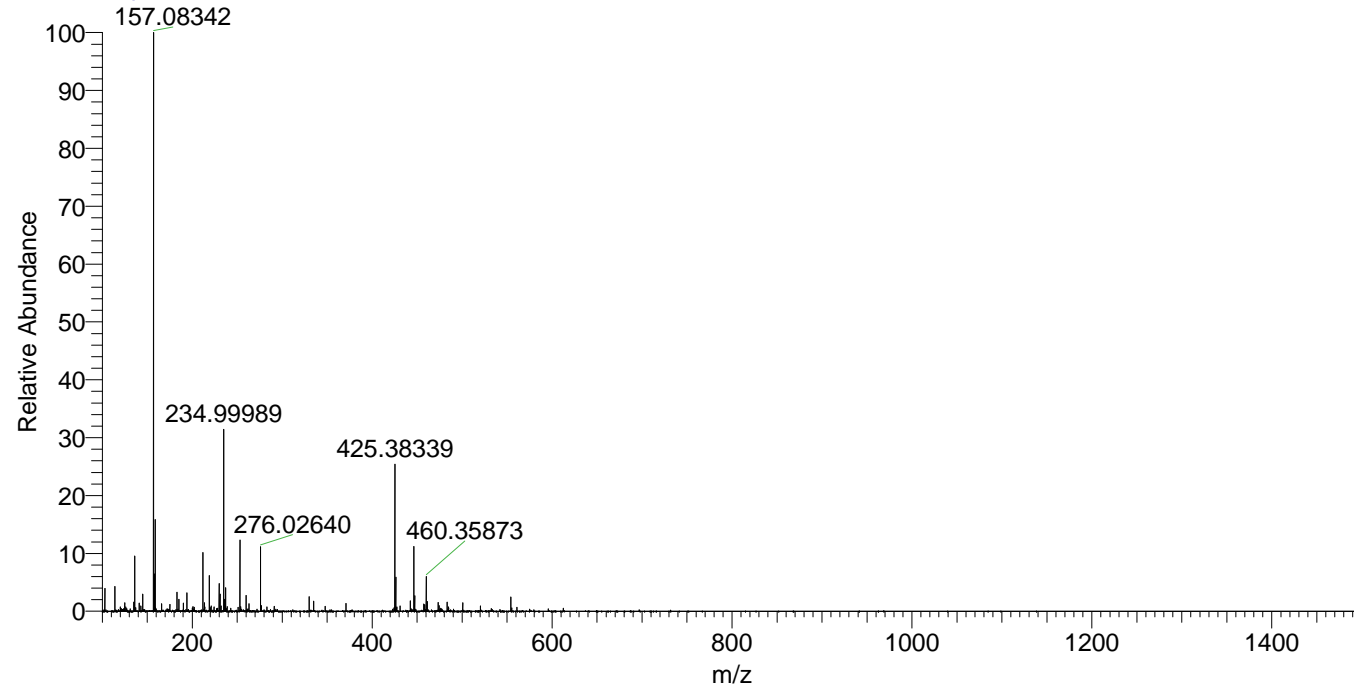
Hcurta_HDX#1017 RT: 6.36
 T: FTMS + p ESI Full ms [100.00-1500.00]
 m/z= 460.00000-461.00000

m/z	Intensity	Relative	Delta (ppm)	Composition
460.35873	1857892.3	100.00	-1.06	C ₂₂ H ₃₀ ² H ₉ O ₄ N ₆
			2.31	C ₂₂ H ₂₈ ² H ₁₀ O ₄ N ₆
			-4.42	C ₂₂ H ₃₂ ² H ₈ O ₄ N ₆

NL: 1.86E6
 Base Peak m/z=
 460.35747-460.36207 F:
 FTMS + p ESI Full ms
 [100.00-1500.00] MS
 Hcurta_HDX

NL: 5.38E4
 Base Peak m/z=
 231.18578-231.18810 F:
 FTMS + p ESI Full ms
 [100.00-1500.00] MS
 Hcurta_HDX

Hcurta_HDX #1017 RT: 6.36 AV: 1 NL: 3.08E7
 T: FTMS + p ESI Full ms [100.00-1500.00]



Hcurta_HDX #1017 RT: 6.36 AV: 1 NL: 3.45E6
 T: FTMS + p ESI Full ms [100.00-1500.00]

