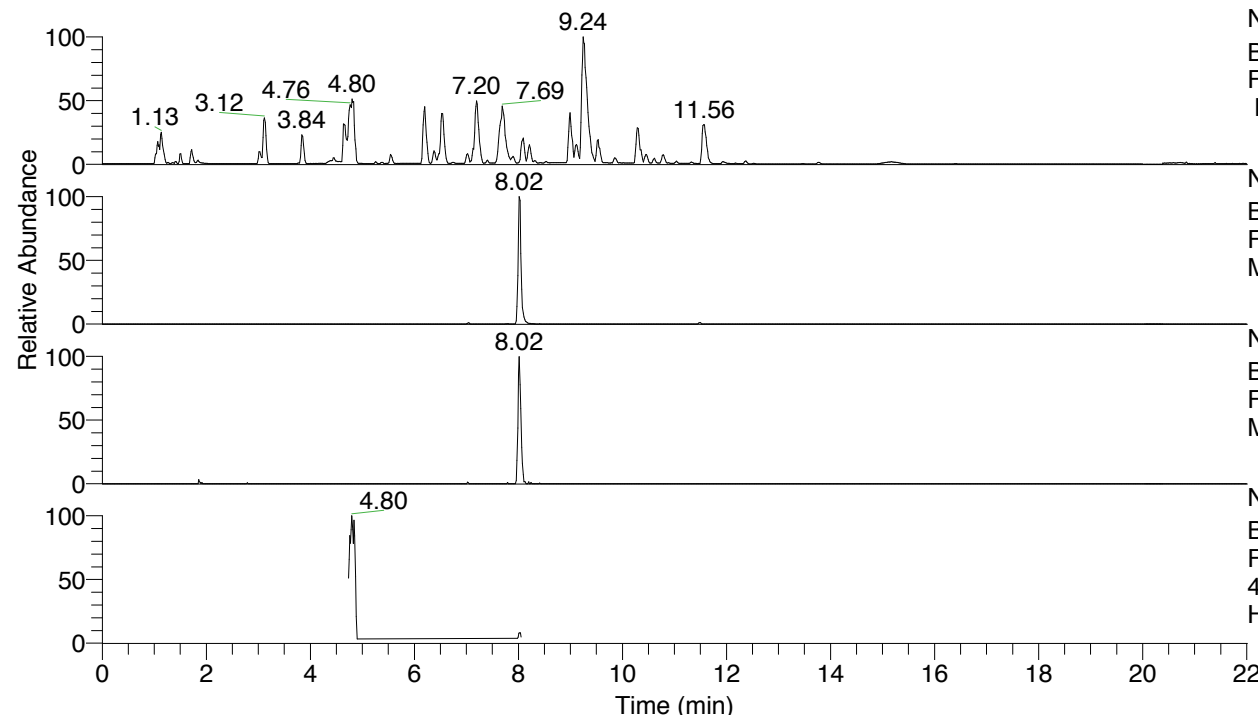


RT: 0.00 - 22.01



NL: 8.52E7  
 Base Peak m/z= 100.00000-1500.00000  
 F: FTMS + p ESI Full ms [100.00-1500.00]  
 MS Hcurta

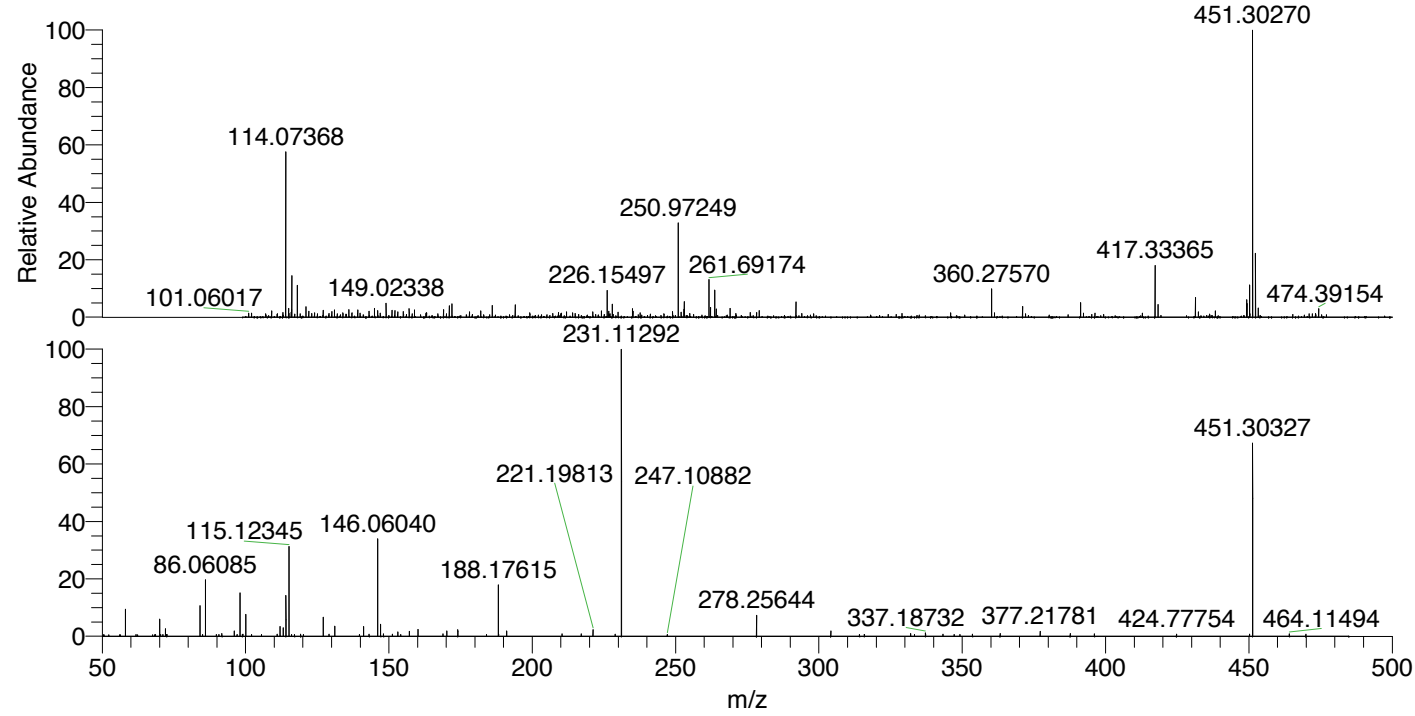
NL: 1.70E6  
 Base Peak m/z= 451.29877-451.30779 F:  
 FTMS + p ESI Full ms [100.00-1500.00]  
 MS Hcurta

NL: 1.58E5  
 Base Peak m/z= 226.15329-226.15781 F:  
 FTMS + p ESI Full ms [100.00-1500.00]  
 MS Hcurta

NL: 1.92E6  
 Base Peak m/z= 50.00000-1500.00000 F:  
 FTMS + p ESI d Full ms2  
 451.30@hcd35.00 [50.00-480.00] MS  
 Hcurta

Hcurta#3208-3231 RT: 8.00-8.05 AV: 5  
 F: FTMS + p ESI d Full ms2 451.30 ...  
 m/z= 50.00000-1000.00000

m/z	Intensity	Relative
58.06604	12057.0	9.74
70.06591	7489.4	6.05
72.08160	3294.7	2.66
84.08168	13448.5	10.87
86.06085	24566.9	19.85
91.75826	1239.4	1.00
96.08144	2309.0	1.87
98.09716	18607.8	15.04
99.09253	960.3	0.78
100.07644	9709.1	7.85
111.06129	875.5	0.71
112.07622	4214.2	3.41
113.10807	3618.8	2.92
114.09194	17788.5	14.38
115.12345	38538.3	31.15
119.22794	908.8	0.73
127.12351	8176.7	6.61
129.10341	861.8	0.70
131.11807	4354.7	3.52
141.13913	4182.4	3.38
143.11860	872.7	0.71
146.06040	41931.5	33.89
147.13687	5161.3	4.17
148.14413	1026.9	0.83
151.18001	856.8	0.69
153.13912	1894.2	1.53
157.13417	2080.1	1.68
160.14502	3084.5	2.49
168.86850	992.4	0.80
170.16580	2231.4	1.80
174.05569	2946.4	2.38
188.17615	22033.6	17.81
191.08280	2243.1	1.81
210.40941	1026.0	0.83
217.09746	999.0	0.81
221.19813	2834.9	2.29
228.92912	844.4	0.68
231.11292	123736.7	100.00
278.25644	9111.4	7.36
304.16551	2267.7	1.83
332.02582	1148.0	0.93
337.18732	1409.7	1.14
343.29649	881.0	0.71
347.21013	840.6	0.68
349.19005	836.3	0.68
353.57504	857.7	0.69
363.24731	1121.8	0.91
377.21781	2117.1	1.71
387.69894	1120.5	0.91
396.12202	1025.7	0.83
424.77754	865.5	0.70
450.24576	914.5	0.74
451.30327	84431.8	68.24
464.11494	1081.9	0.87
469.89736	945.0	0.76



NL: 1.69E6  
 Hcurta#3217 RT: 8.02  
 AV: 1 T: FTMS + p ESI  
 Full lock ms  
 [100.00-1500.00]

NL: 1.23E5  
 Hcurta#3205-3231 RT:  
 8.00-8.05 AV: 5 F: FTMS  
 + p ESI d Full ms2  
 451.30@hcd35.00  
 [50.00-480.00]

Hcurta#3208-3231 RT: 8.00-8.05 AV: 5

F: FTMS + p ESI d Full ms2 451.30@hcd35.00 [50.00-480.00]

m/z= 50.00000-1000.00000

m/z	Intensity	Relative
50.45189	667.2	0.54
52.25174	642.6	0.52
56.33590	632.6	0.51
58.06604	12057.0	9.74
61.75819	730.3	0.59
62.38207	646.8	0.52
67.61291	624.0	0.50
68.21274	654.6	0.53
68.59220	749.7	0.61
70.06591	7489.4	6.05
70.34458	801.3	0.65
71.18110	690.0	0.56
72.08160	3294.7	2.66
72.35943	753.7	0.61
72.55787	733.0	0.59
84.08168	13448.5	10.87
84.98676	809.3	0.65
86.06085	24566.9	19.85
89.84155	706.9	0.57
90.70225	782.7	0.63
91.75826	1239.4	1.00
96.08144	2309.0	1.87
97.01532	749.0	0.61
98.09716	18607.8	15.04
98.90825	765.2	0.62
99.09253	960.3	0.78
100.07644	9709.1	7.85
102.05557	765.3	0.62
105.50890	760.3	0.61
111.06129	875.5	0.71
112.07622	4214.2	3.41
113.10807	3618.8	2.92
114.09194	17788.5	14.38
115.12345	38538.3	31.15
116.09022	824.7	0.67
117.10258	758.9	0.61
119.22794	908.8	0.73
120.13559	801.0	0.65
127.12351	8176.7	6.61

Hcurta#3208-3231 RT: 8.00-8.05 AV: 5

F: FTMS + p ESI d Full ms2 451.30@hcd35.00 [50.00-480.00]

m/z= 50.00000-1000.00000

m/z	Intensity	Relative
129.10341	861.8	0.70
131.11807	4354.7	3.52
139.74152	770.4	0.62
141.13913	4182.4	3.38
143.11860	872.7	0.71
146.06040	41931.5	33.89
147.13687	5161.3	4.17
148.14413	1026.9	0.83
151.18001	856.8	0.69
153.13912	1894.2	1.53
154.09535	773.4	0.63
157.13417	2080.1	1.68
160.14502	3084.5	2.49
168.86850	992.4	0.80
170.16580	2231.4	1.80
174.05569	2946.4	2.38
184.03556	785.2	0.63
188.17615	22033.6	17.81
188.26616	835.1	0.67
191.08280	2243.1	1.81
210.40941	1026.0	0.83
217.09746	999.0	0.81
221.19813	2834.9	2.29
228.92912	844.4	0.68
231.11292	123736.7	100.00
247.10882	832.1	0.67
278.25644	9111.4	7.36
304.16551	2267.7	1.83
314.16841	782.7	0.63
315.86555	826.4	0.67
332.02582	1148.0	0.93
333.33884	801.8	0.65
337.18732	1409.7	1.14
343.29649	881.0	0.71
347.21013	840.6	0.68
349.19005	836.3	0.68
353.57504	857.7	0.69
363.24731	1121.8	0.91
377.21781	2117.1	1.71

Hcurta#3208-3231 RT: 8.00-8.05 AV: 5

F: FTMS + p ESI d Full ms2 451.30@hcd35.00 [50.00-480.00]

m/z= 50.00000-1000.00000

m/z	Intensity	Relative
387.69894	1120.5	0.91
396.12202	1025.7	0.83
424.77754	865.5	0.70
450.24576	914.5	0.74
451.30327	84431.8	68.24
464.11494	1081.9	0.87
469.89736	945.0	0.76