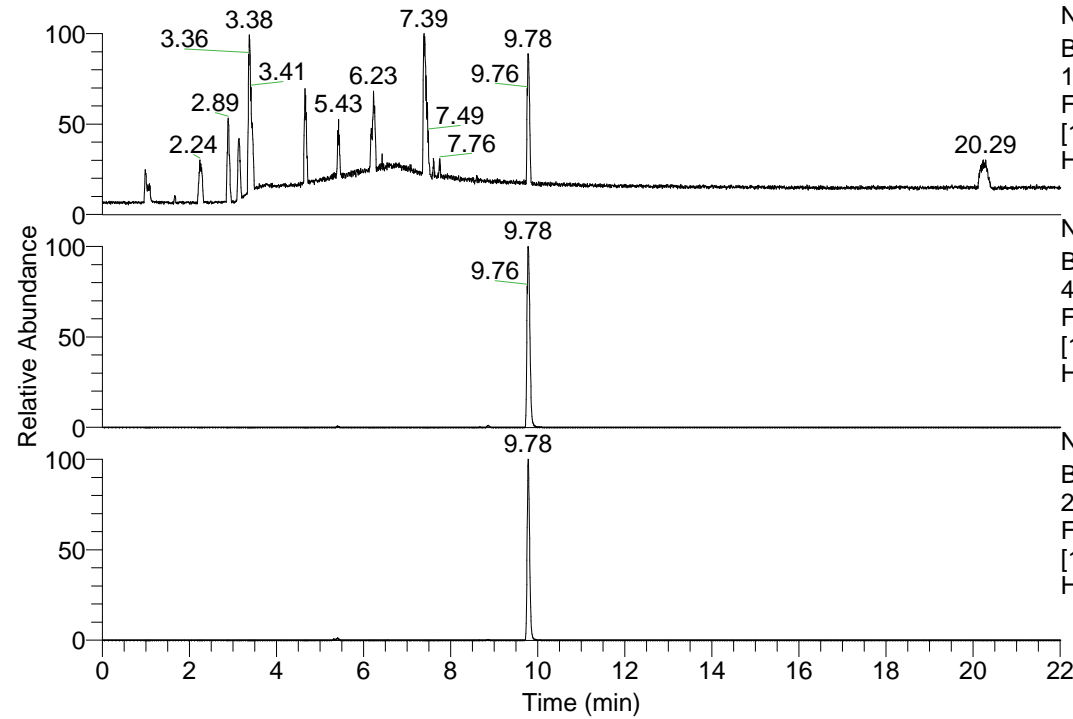


RT: 0.00 - 22.01



NL: 1.13E8
 Base Peak m/z=
 100.00000-1500.00000 F:
 FTMS + p ESI Full ms
 [100.00-1500.00] MS
 Hcurta_HDX

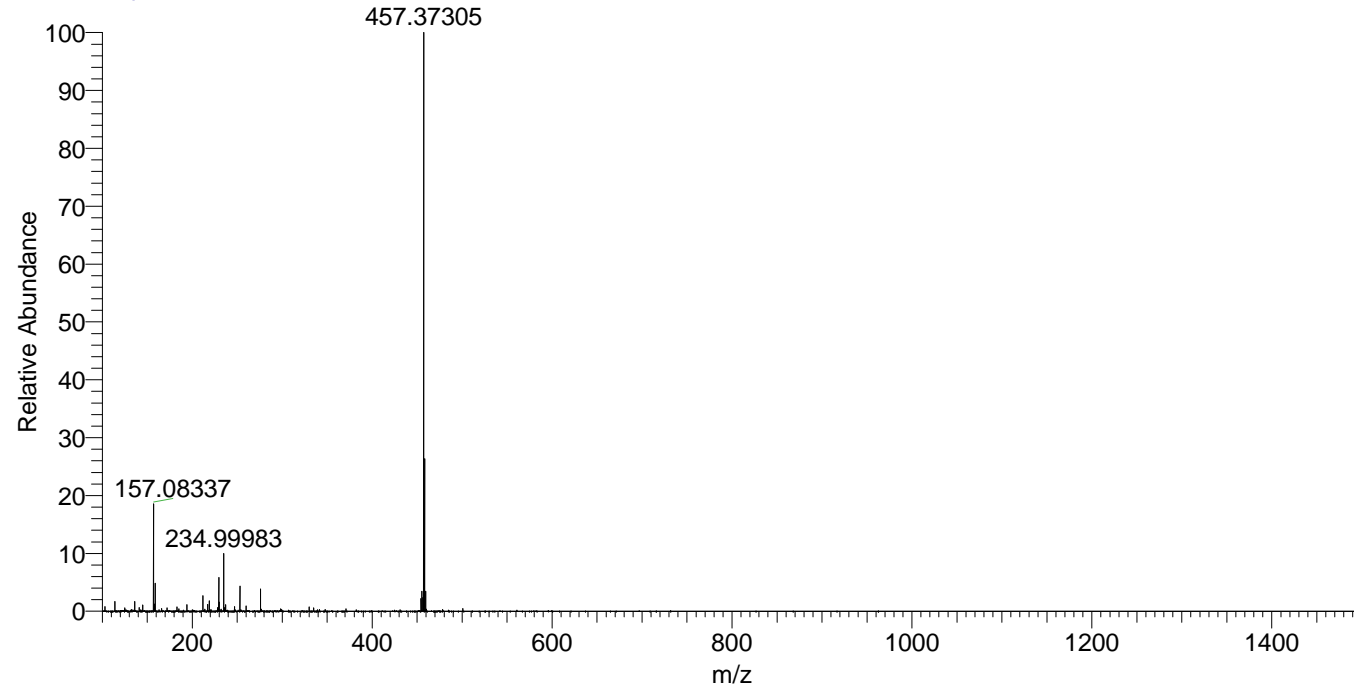
NL: 1.01E8
 Base Peak m/z=
 457.37194-457.37652 F:
 FTMS + p ESI Full ms
 [100.00-1500.00] MS
 Hcurta_HDX

NL: 6.01E6
 Base Peak m/z=
 229.69302-229.69532 F:
 FTMS + p ESI Full ms
 [100.00-1500.00] MS
 Hcurta_HDX

Hcurta_HDX#1586 RT: 9.78
 T: FTMS + p ESI Full ms [100.00-1500.00]
 m/z= 457.00000-458.00000

m/z	Intensity	Relative	Delta (ppm)	Composition
457.37305	100064248.0	100.00	-1.38	C ₂₃ H ₃₃ ² H ₈ O ₃ N ₆
			2.00	C ₂₃ H ₃₁ ² H ₉ O ₃ N ₆
			-4.77	C ₂₃ H ₃₅ ² H ₇ O ₃ N ₆

Hcurta_HDX #1586 RT: 9.78 AV: 1 NL: 9.97E7
 T: FTMS + p ESI Full ms [100.00-1500.00]



Hcurta_HDX #1586 RT: 9.78 AV: 1 NL: 9.97E7
 T: FTMS + p ESI Full ms [100.00-1500.00]

