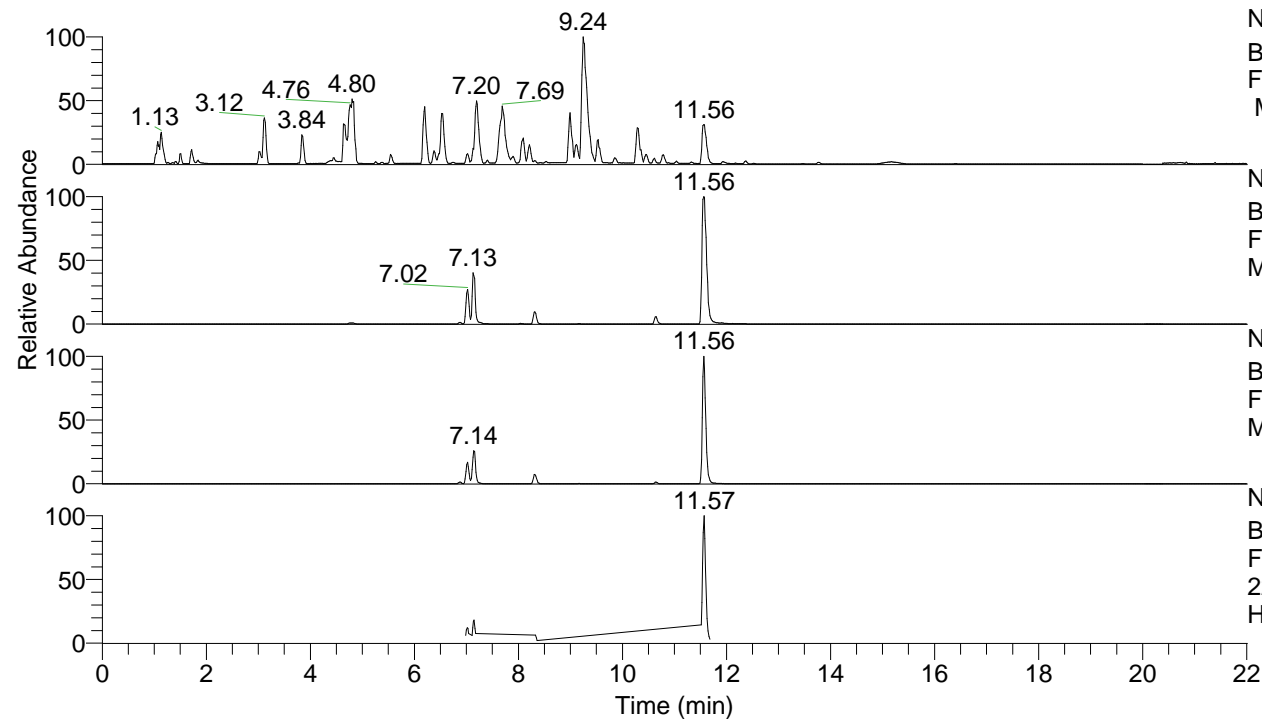


RT: 0.00 - 22.01



NL: 8.52E7  
 Base Peak m/z= 100.00000-1500.00000  
 F: FTMS + p ESI Full ms [100.00-1500.00]  
 MS Hcurta

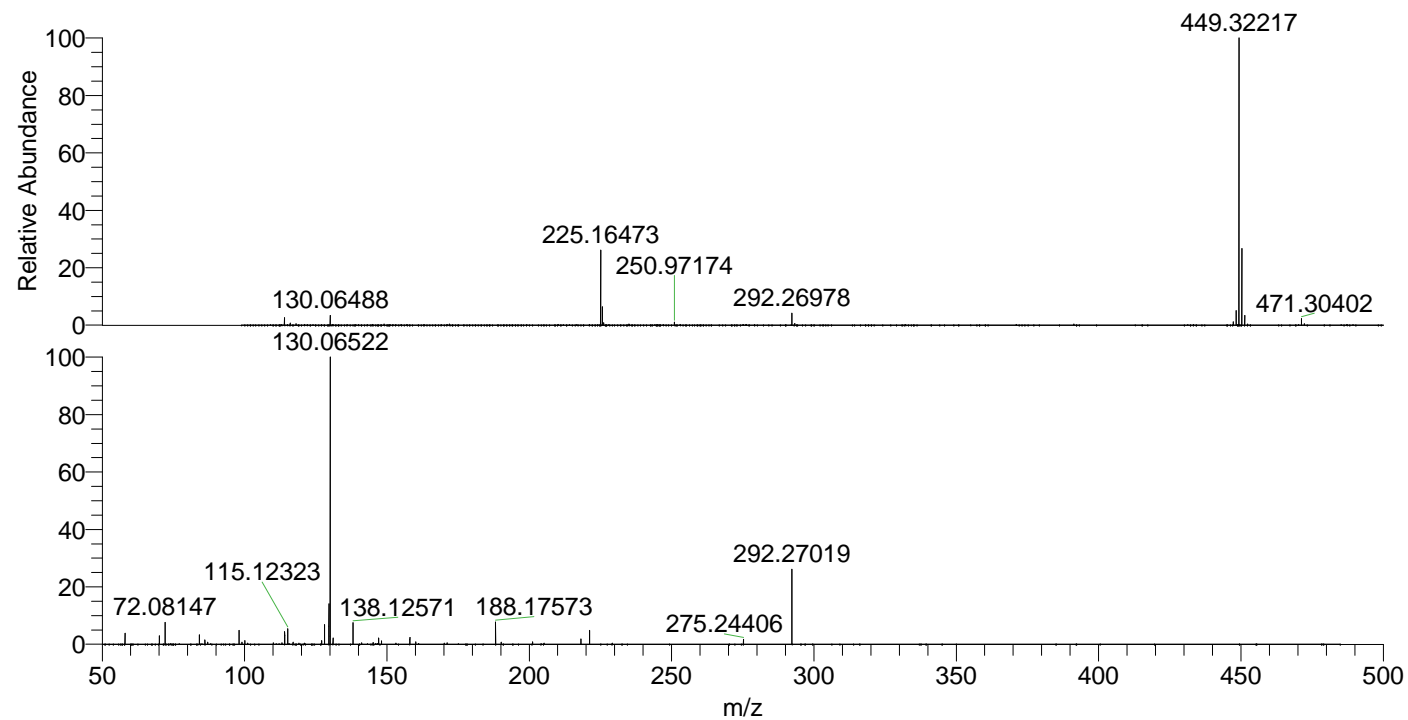
NL: 2.67E7  
 Base Peak m/z= 449.31952-449.32850 F:  
 FTMS + p ESI Full ms [100.00-1500.00]  
 MS Hcurta

NL: 6.56E6  
 Base Peak m/z= 225.16367-225.16817 F:  
 FTMS + p ESI Full ms [100.00-1500.00]  
 MS Hcurta

NL: 2.78E6  
 Base Peak m/z= 50.00000-1500.00000 F:  
 FTMS + p ESI d Full ms2  
 225.16@hcd35.00 [50.00-480.00] MS  
 Hcurta

Hcurta#4620-4671 RT: 11.52-11.64 AV: 10  
 F: FTMS + p ESI d Full ms2 225.16@h ...  
 m/z= 50.00000-1000.00000

m/z	Intensity	Relative
58.06592	49957.3	3.88
70.06581	37680.7	2.92
72.08147	98039.1	7.61
84.08131	41659.3	3.23
86.06063	19879.4	1.54
87.09218	8924.9	0.69
98.09687	61347.5	4.76
99.09203	9090.1	0.71
100.07607	16736.4	1.30
110.09678	7161.5	0.56
113.10761	6520.0	0.51
114.09163	56240.0	4.36
115.12323	68171.3	5.29
117.10239	9082.1	0.70
127.12296	16164.2	1.25
128.10704	86656.4	6.72
129.61247	179253.7	13.91
130.06522	1288858.6	100.00
131.11786	27656.3	2.15
138.12571	98286.0	7.63
141.13855	7127.1	0.55
145.13348	7696.7	0.60
147.11259	27665.8	2.15
147.13647	17025.4	1.32
148.14437	14610.1	1.13
158.05983	30916.1	2.40
160.14441	10922.3	0.85
188.17573	97768.5	7.59
190.15525	8669.0	0.67
201.15985	10841.0	0.84
218.18619	23975.9	1.86
221.19720	61308.6	4.76
275.24406	22186.5	1.72
292.27019	332631.4	25.81



NL: 2.51E7  
 Hcurta#4639 RT: 11.56  
 AV: 1 T: FTMS + p ESI  
 Full ms [100.00-1500.00]

NL: 1.27E6  
 Hcurta#4608-4677 RT:  
 11.52-11.64 AV: 10 F:  
 FTMS + p ESI d Full ms2  
 225.16@hcd35.00  
 [50.00-480.00]