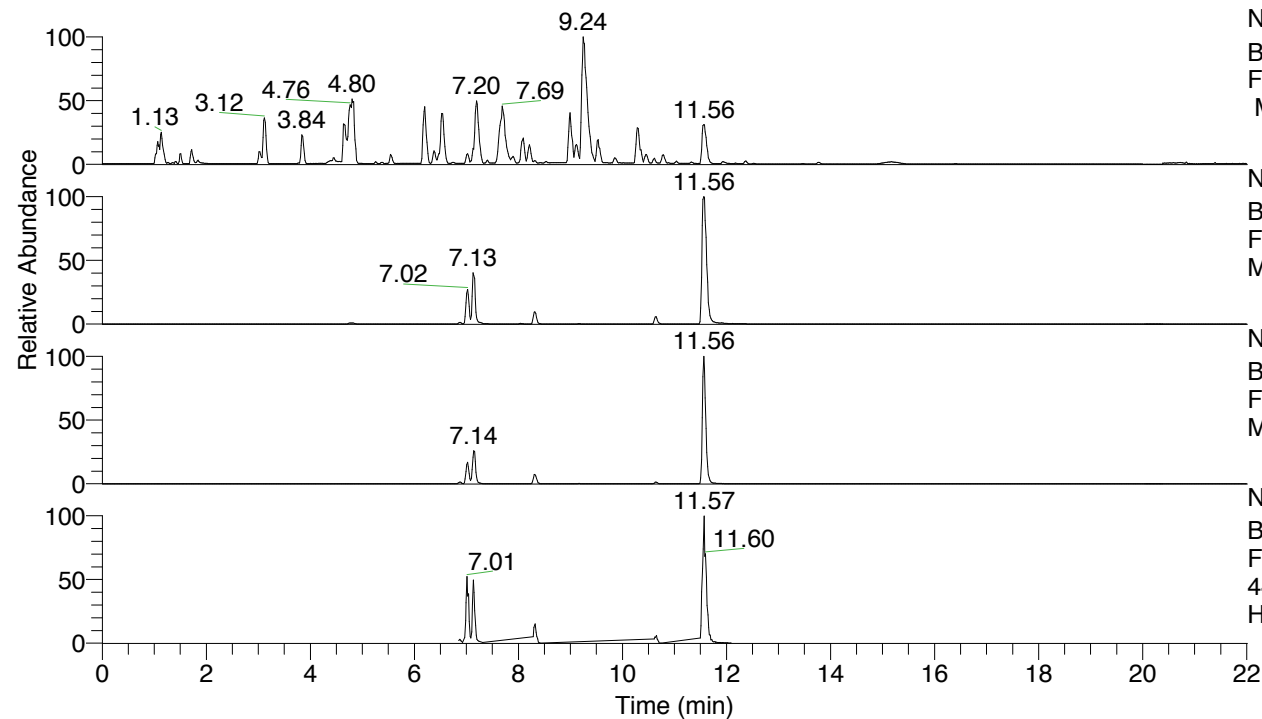


RT: 0.00 - 22.01



NL: 8.52E7
 Base Peak m/z= 100.00000-1500.00000
 F: FTMS + p ESI Full ms [100.00-1500.00]
 MS Hcurta

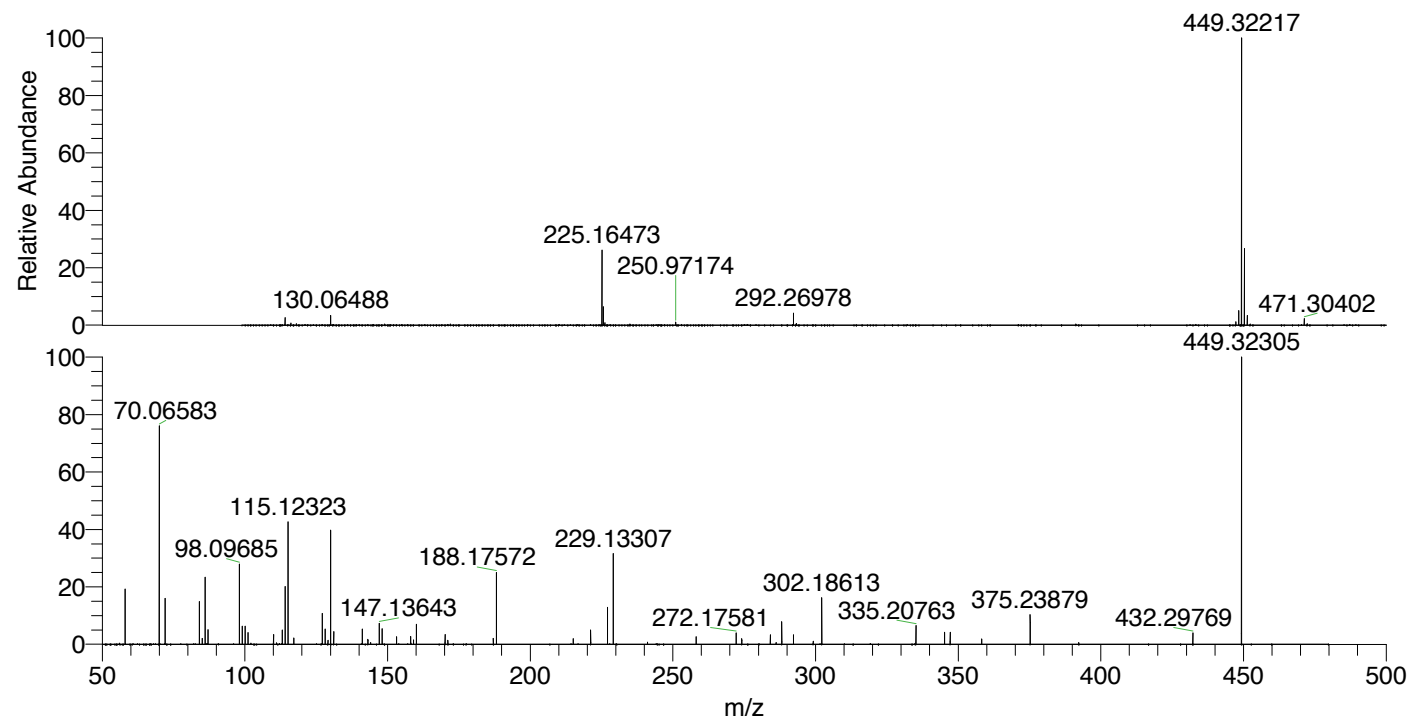
NL: 2.67E7
 Base Peak m/z= 449.31952-449.32850 F:
 FTMS + p ESI Full ms [100.00-1500.00]
 MS Hcurta

NL: 6.56E6
 Base Peak m/z= 225.16367-225.16817 F:
 FTMS + p ESI Full ms [100.00-1500.00]
 MS Hcurta

NL: 2.78E6
 Base Peak m/z= 50.00000-1500.00000 F:
 FTMS + p ESI d Full ms2
 449.32@hcd35.00 [50.00-475.00] MS
 Hcurta

Hcurta#4617-4664 RT: 11.51-11.63 AV: 9
 F: FTMS + p ESI d Full ms2 449.32@h ...
 m/z= 50.00000-1000.00000

m/z	Intensity	Relative
58.06592	301140.7	20.81
70.06582	1212517.0	83.80
70.06991	11903.1	0.82
72.08148	262551.2	18.14
84.08134	236742.0	16.36
85.07656	32445.2	2.24
86.06061	382118.9	26.41
86.09694	9720.1	0.67
87.09224	83632.9	5.78
98.09689	460351.0	31.81
99.09210	99186.9	6.85
100.07611	99806.7	6.90
101.10774	64770.1	4.48
110.09682	53751.9	3.71
113.10762	79175.4	5.47
114.09163	319097.8	22.05
115.12325	676884.9	46.78
117.10246	34360.2	2.37
127.12312	172504.0	11.92
128.10709	80605.4	5.57
129.10233	21943.5	1.52
130.06517	614444.8	42.46
131.11792	67823.3	4.69
141.13860	80985.2	5.60
143.11806	26294.1	1.82
147.13637	112098.0	7.75
148.14440	80819.8	5.59
153.13886	40068.9	2.77
158.06037	42731.9	2.95
159.09167	22286.5	1.54
160.14423	106497.0	7.36
170.16518	53343.6	3.69
171.14934	21242.6	1.47
187.08742	31265.6	2.16
188.17575	394394.9	27.26
215.11818	29235.7	2.02
221.19713	77577.9	5.36
227.11772	203196.2	14.04
229.13332	473907.4	32.75
241.13380	10520.9	0.73
258.16050	40853.9	2.82
272.17589	62066.7	4.29
274.15450	30920.1	2.14
284.17534	51842.1	3.58
288.17016	122796.3	8.49
292.27085	48898.2	3.38
299.18693	16965.6	1.17
302.18608	241721.6	16.71
335.20793	102684.0	7.10
345.22849	61662.8	4.26
347.20735	62029.5	4.29
358.23645	27194.9	1.88
375.23835	156311.8	10.80
432.29780	61059.3	4.22
449.32300	1446999.4	100.00



NL: 2.51E7
 Hcurta#4639 RT: 11.56
 AV: 1 T: FTMS + p ESI
 Full ms [100.00-1500.00]

NL: 1.71E6
 Hcurta#4621-4666 RT:
 11.52-11.63 AV: 8 F:
 FTMS + p ESI d Full ms2
 449.32@hcd35.00
 [50.00-475.00]

Hcurta#4617-4664 RT: 11.51-11.63 AV: 9

F: FTMS + p ESI d Full ms2 449.32@hcd35.00 [50.00-475.00]

m/z= 50.00000-1000.00000

m/z	Intensity	Relative
58.06592	301140.7	20.81
70.06582	1212517.0	83.80
70.06991	11903.1	0.82
72.08148	262551.2	18.14
84.08134	236742.0	16.36
85.07656	32445.2	2.24
86.06061	382118.9	26.41
86.09694	9720.1	0.67
87.09224	83632.9	5.78
98.09689	460351.0	31.81
99.09210	99186.9	6.85
100.07611	99806.7	6.90
101.10774	64770.1	4.48
110.09682	53751.9	3.71
111.09168	7668.8	0.53
113.10762	79175.4	5.47
114.09163	319097.8	22.05
115.12325	676884.9	46.78
117.10246	34360.2	2.37
127.12312	172504.0	11.92
128.10709	80605.4	5.57
129.10233	21943.5	1.52
130.06517	614444.8	42.46
131.11792	67823.3	4.69
141.13860	80985.2	5.60
143.11806	26294.1	1.82
144.08079	9019.1	0.62
147.11283	8851.8	0.61
147.13637	112098.0	7.75
148.14440	80819.8	5.59
153.13886	40068.9	2.77
158.06037	42731.9	2.95
159.09167	22286.5	1.54
160.14423	106497.0	7.36
170.06000	7951.6	0.55
170.16518	53343.6	3.69
171.14934	21242.6	1.47
187.08742	31265.6	2.16
188.17575	394394.9	27.26

Hcurta#4617-4664 RT: 11.51-11.63 AV: 9

F: FTMS + p ESI d Full ms2 449.32@hcd35.00 [50.00-475.00]

m/z= 50.00000-1000.00000

m/z	Intensity	Relative
215.11818	29235.7	2.02
221.19713	77577.9	5.36
227.11772	203196.2	14.04
229.13332	473907.4	32.75
241.13380	10520.9	0.73
258.16050	40853.9	2.82
272.17589	62066.7	4.29
274.15450	30920.1	2.14
284.17534	51842.1	3.58
286.19090	8331.9	0.58
288.17016	122796.3	8.49
292.27085	48898.2	3.38
299.18693	16965.6	1.17
302.18608	241721.6	16.71
335.20793	102684.0	7.10
345.22849	61662.8	4.26
347.20735	62029.5	4.29
358.23645	27194.9	1.88
375.23835	156311.8	10.80
392.26551	9121.8	0.63
432.29780	61059.3	4.22
449.32300	1446999.4	100.00