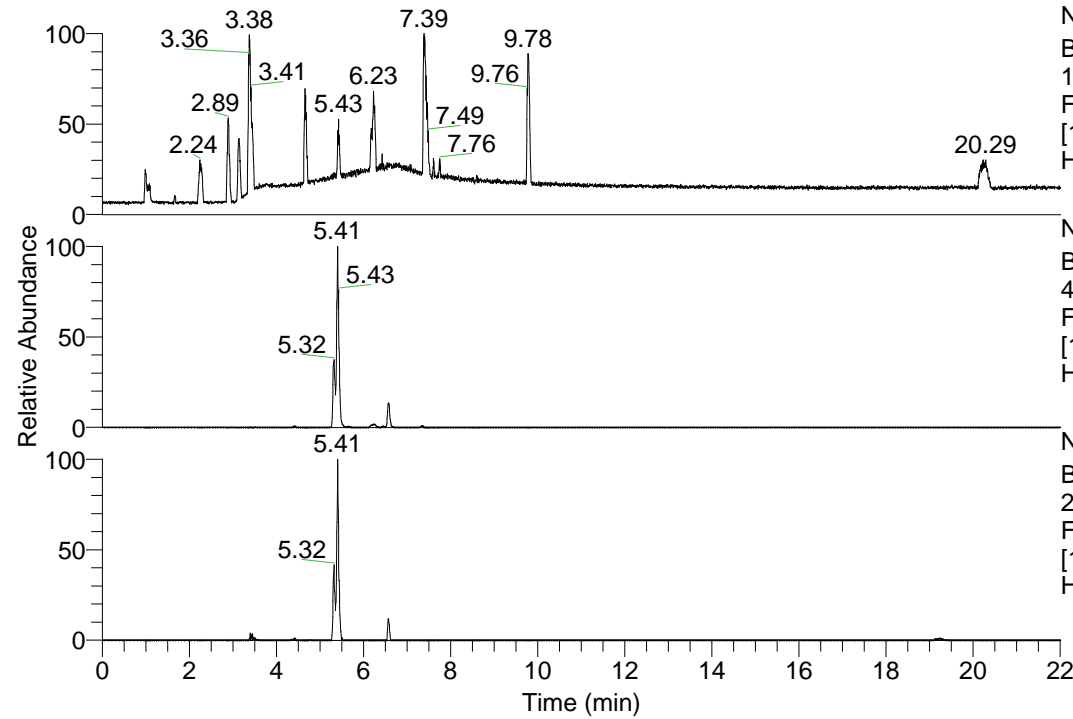


RT: 0.00 - 22.01



NL: 1.13E8  
 Base Peak m/z=  
 100.00000-1500.00000 F:  
 FTMS + p ESI Full ms  
 [100.00-1500.00] MS  
 Hcurta\_HDX

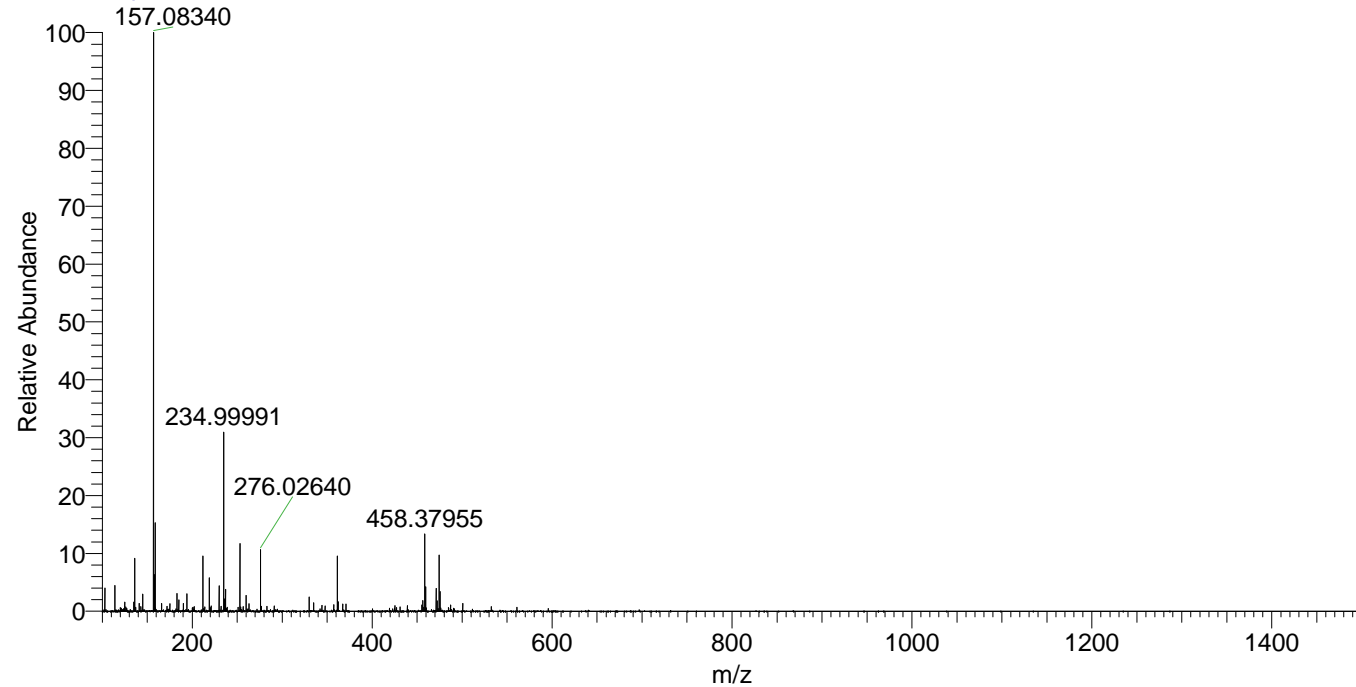
NL: 3.13E7  
 Base Peak m/z=  
 458.37822-458.38280 F:  
 FTMS + p ESI Full ms  
 [100.00-1500.00] MS  
 Hcurta\_HDX

NL: 1.42E6  
 Base Peak m/z=  
 230.19615-230.19845 F:  
 FTMS + p ESI Full ms  
 [100.00-1500.00] MS  
 Hcurta\_HDX

Hcurta\_HDX#1054 RT: 6.58  
 T: FTMS + p ESI Full ms [100.00-1500.00]  
 m/z= 458.00000-459.00000

m/z	Intensity	Relative	Delta (ppm)	Composition
458.37955	4224823.5	100.00	-0.89	C <sub>23</sub> H <sub>32</sub> <sup>2</sup> H <sub>9</sub> O <sub>3</sub> N <sub>6</sub>
			2.48	C <sub>23</sub> H <sub>30</sub> <sup>2</sup> H <sub>10</sub> O <sub>3</sub> N <sub>6</sub>
			-4.27	C <sub>23</sub> H <sub>34</sub> <sup>2</sup> H <sub>8</sub> O <sub>3</sub> N <sub>6</sub>

Hcurta\_HDX #1054 RT: 6.58 AV: 1 NL: 3.06E7  
 T: FTMS + p ESI Full ms [100.00-1500.00]



Hcurta\_HDX #1054 RT: 6.58 AV: 1 NL: 4.09E6  
 T: FTMS + p ESI Full ms [100.00-1500.00]

