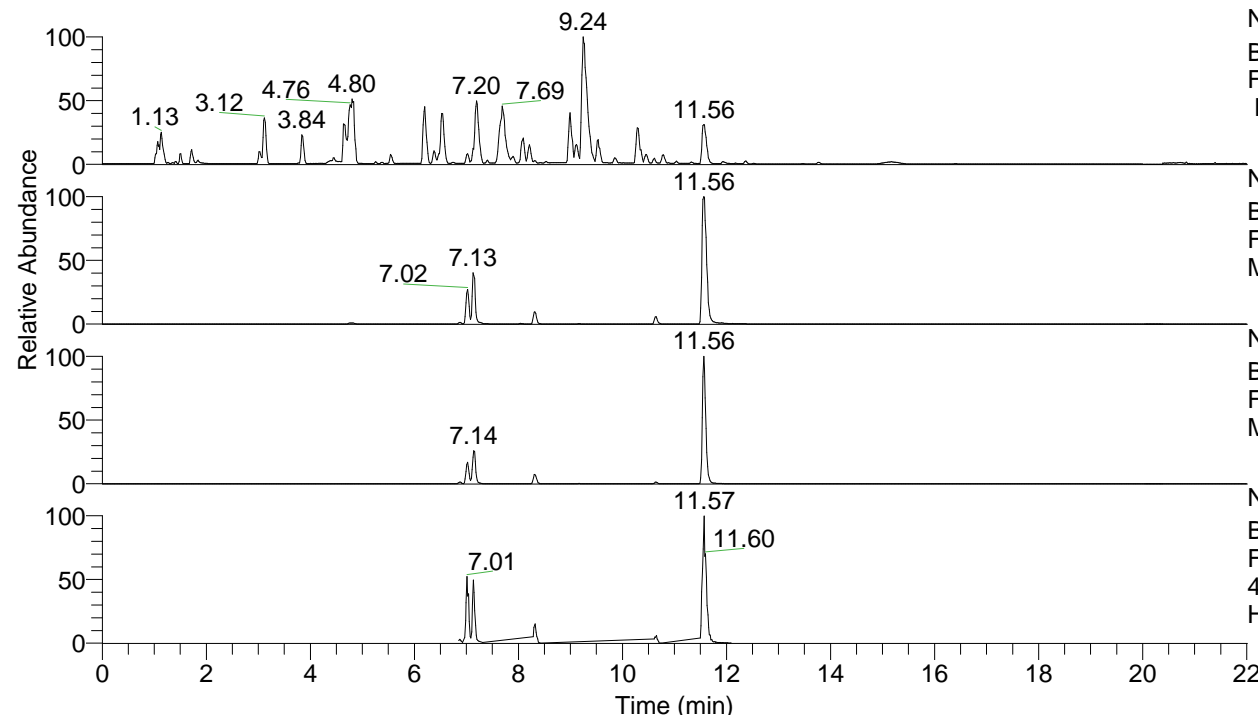


RT: 0.00 - 22.01

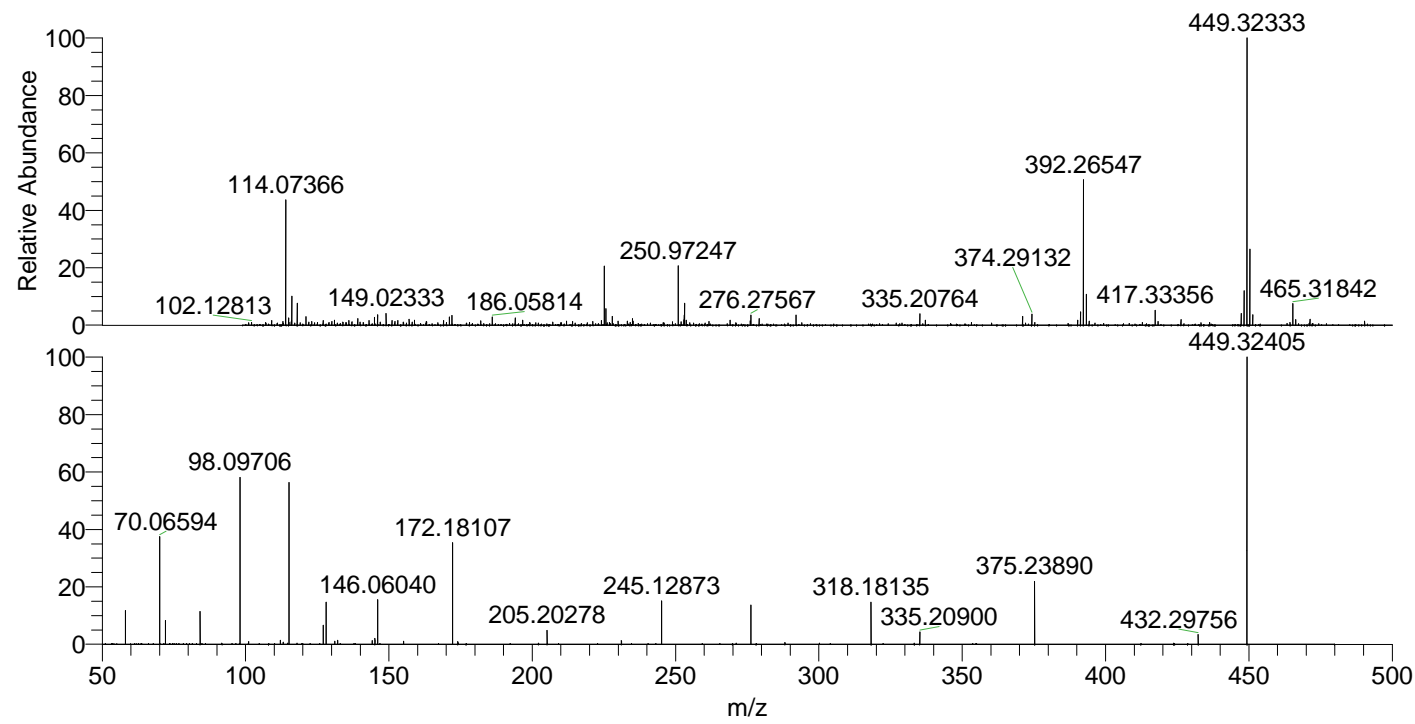


Hcurta#3324-3350 RT: 8.28-8.35 AV: 6

F: FTMS + p ESI d Full ms2 449.32 ...

m/z= 50.00000-1000.00000

m/z	Intensity	Relative
58.06602	30377.9	11.71
70.06594	96618.6	37.26
72.08159	20831.2	8.03
84.08151	29852.4	11.51
98.09706	146159.7	56.36
98.10319	2151.7	0.83
101.10792	2361.4	0.91
112.11255	3596.7	1.39
113.10762	1829.9	0.71
115.12345	141680.3	54.63
127.12342	16551.4	6.38
128.10729	37232.9	14.36
131.11819	2614.5	1.01
132.14989	3537.0	1.36
144.14971	3232.1	1.25
145.13384	5136.4	1.98
146.06040	39191.8	15.11
155.15474	2687.9	1.04
172.18107	88901.3	34.28
174.05526	2486.1	0.96
205.20278	12314.0	4.75
231.11351	3292.3	1.27
245.12873	38434.8	14.82
276.27593	34736.6	13.39
288.17108	1443.5	0.56
318.18135	36825.5	14.20
335.20900	10699.1	4.13
375.23890	55369.1	21.35
432.29756	8556.9	3.30
449.32405	259333.4	100.00



NL: 2.39E6
Hcurta#3337 RT: 8.32
AV: 1 T: FTMS + p ESI
Full lock ms
[100.00-1500.00]

NL: 2.51E5
Hcurta#3322-3354 RT:
8.28-8.35 AV: 6 F: FTMS
+ p ESI d Full ms2
449.32@hcd35.00
[50.00-475.00]