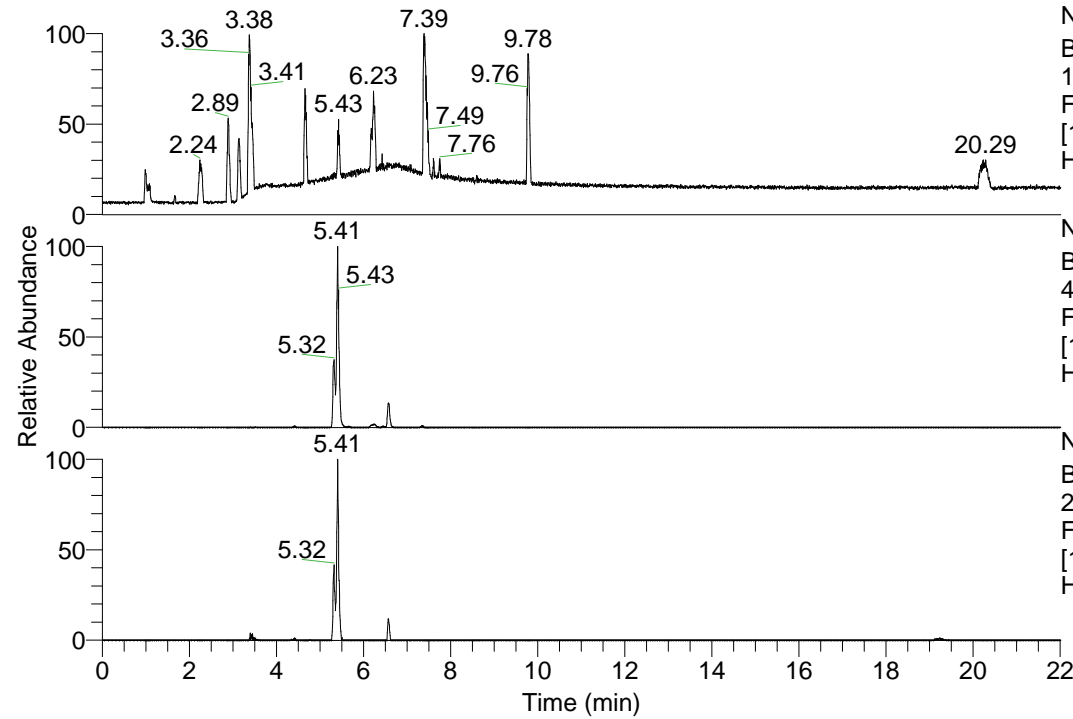


RT: 0.00 - 22.01



NL: 1.13E8  
Base Peak m/z=  
100.00000-1500.00000 F:  
FTMS + p ESI Full ms  
[100.00-1500.00] MS  
Hcurta\_HDX

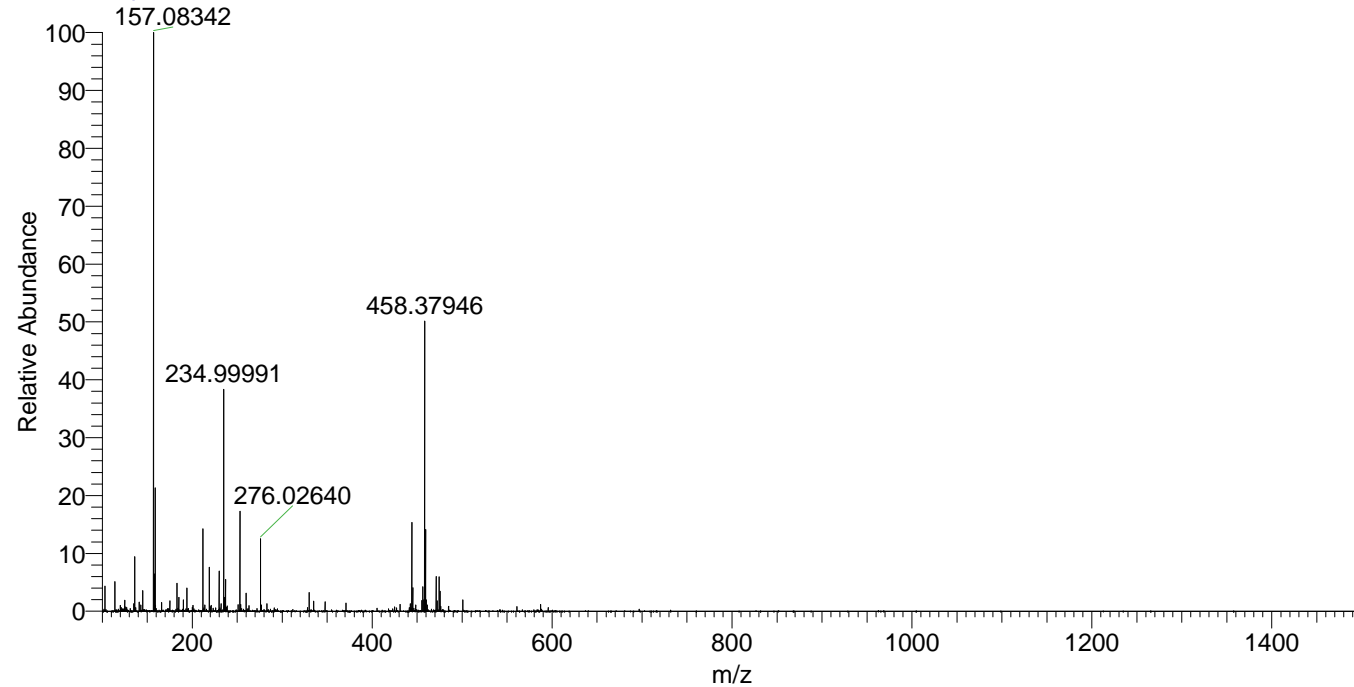
NL: 3.13E7  
Base Peak m/z=  
458.37822-458.38280 F:  
FTMS + p ESI Full ms  
[100.00-1500.00] MS  
Hcurta\_HDX

NL: 1.42E6  
Base Peak m/z=  
230.19615-230.19845 F:  
FTMS + p ESI Full ms  
[100.00-1500.00] MS  
Hcurta\_HDX

Hcurta\_HDX#841 RT: 5.32  
T: FTMS + p ESI Full ms [100.00-1500.00]  
m/z= 458.00000-459.00000

m/z	Intensity	Relative	Delta (ppm)	Composition
458.37946	11243737.0	100.00	-1.09	C <sub>23</sub> H <sub>32</sub> <sup>2</sup> H <sub>9</sub> O <sub>3</sub> N <sub>6</sub>
			2.29	C <sub>23</sub> H <sub>30</sub> <sup>2</sup> H <sub>10</sub> O <sub>3</sub> N <sub>6</sub>
			-4.47	C <sub>23</sub> H <sub>34</sub> <sup>2</sup> H <sub>8</sub> O <sub>3</sub> N <sub>6</sub>

Hcurta\_HDX #841 RT: 5.32 AV: 1 NL: 2.22E7  
T: FTMS + p ESI Full ms [100.00-1500.00]



Hcurta\_HDX #841 RT: 5.32 AV: 1 NL: 1.11E7  
T: FTMS + p ESI Full ms [100.00-1500.00]

