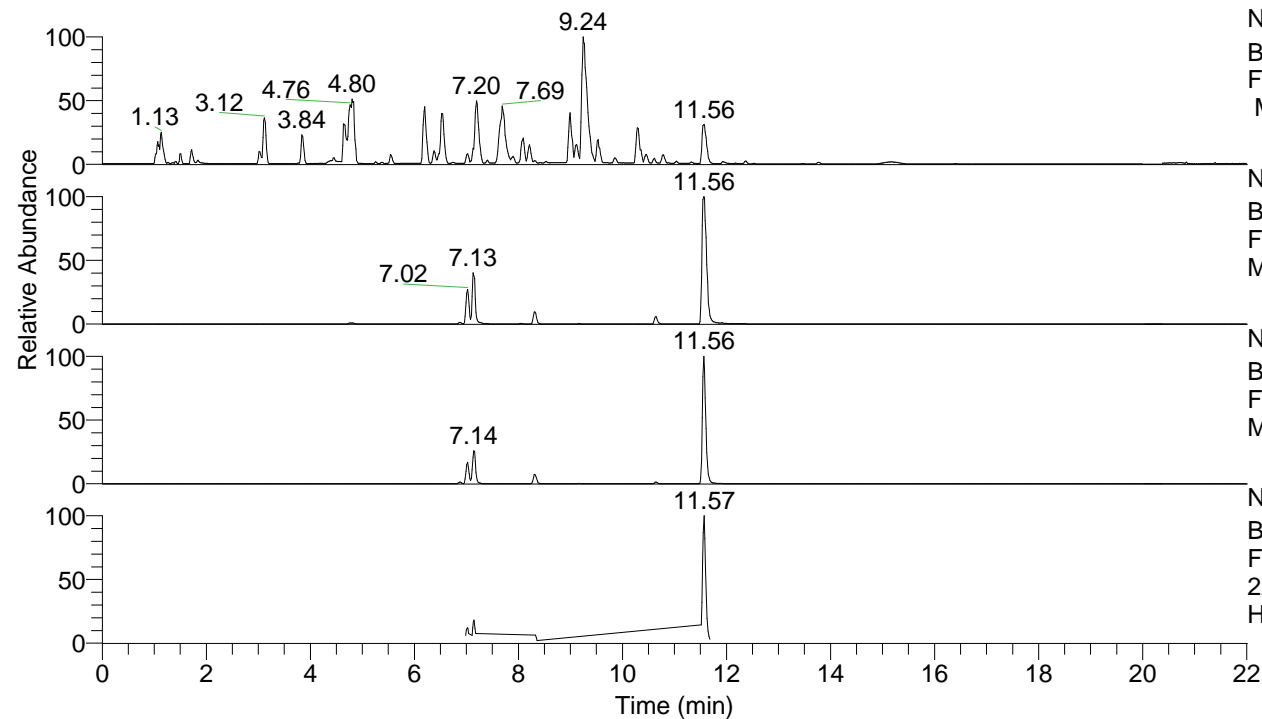


RT: 0.00 - 22.01



NL: 8.52E7  
 Base Peak m/z= 100.00000-1500.00000  
 F: FTMS + p ESI Full ms [100.00-1500.00]  
 MS Hcurta

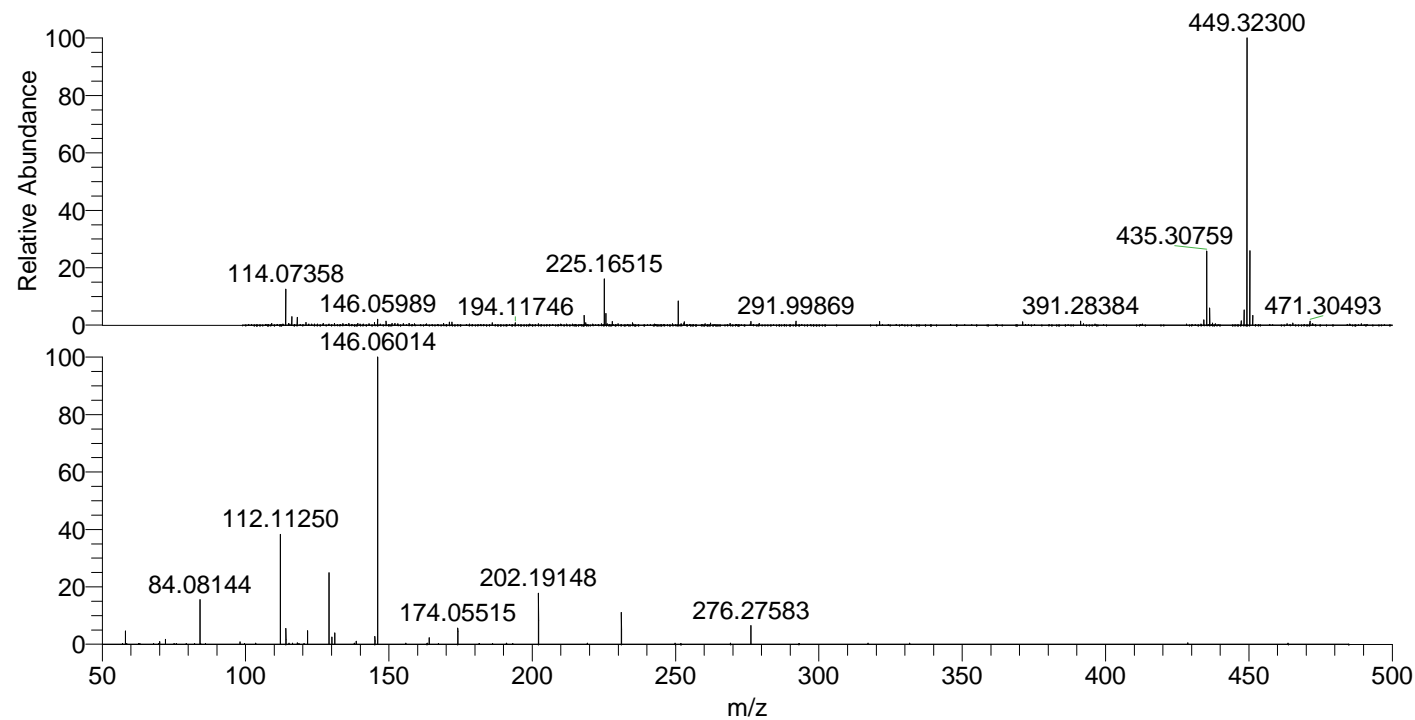
NL: 2.67E7  
 Base Peak m/z= 449.31952-449.32850 F:  
 FTMS + p ESI Full ms [100.00-1500.00]  
 MS Hcurta

NL: 6.56E6  
 Base Peak m/z= 225.16367-225.16817 F:  
 FTMS + p ESI Full ms [100.00-1500.00]  
 MS Hcurta

NL: 2.78E6  
 Base Peak m/z= 50.00000-1500.00000 F:  
 FTMS + p ESI d Full ms2  
 225.16@hcd35.00 [50.00-480.00] MS  
 Hcurta

Hcurta#2807-2818 RT: 7.00-7.03 AV: 3  
 F: FTMS + p ESI d Full ms2 225.16 ...  
 m/z= 50.00000-1000.00000

m/z	Intensity	Relative
58.06601	13980.8	4.60
70.06595	2942.8	0.97
72.08158	5135.7	1.69
84.08144	46526.5	15.29
98.09724	2326.2	0.76
112.11250	114439.6	37.61
114.09171	16785.9	5.52
121.61542	13987.4	4.60
129.13884	76670.9	25.20
130.12868	7661.4	2.52
131.11828	11757.0	3.86
138.64177	3134.1	1.03
145.13384	8276.7	2.72
146.06014	304256.4	100.00
164.07072	7015.9	2.31
174.05515	16743.5	5.50
202.19148	52808.9	17.36
231.11319	33070.2	10.87
276.27583	19808.7	6.51



NL: 6.86E6  
 Hcurta#2815 RT: 7.02  
 AV: 1 T: FTMS + p ESI  
 Full lock ms  
 [100.00-1500.00]

NL: 2.97E5  
 Hcurta#2803-2822 RT:  
 7.00-7.03 AV: 3 F: FTMS  
 + p ESI d Full ms2  
 225.16@hcd35.00  
 [50.00-480.00]