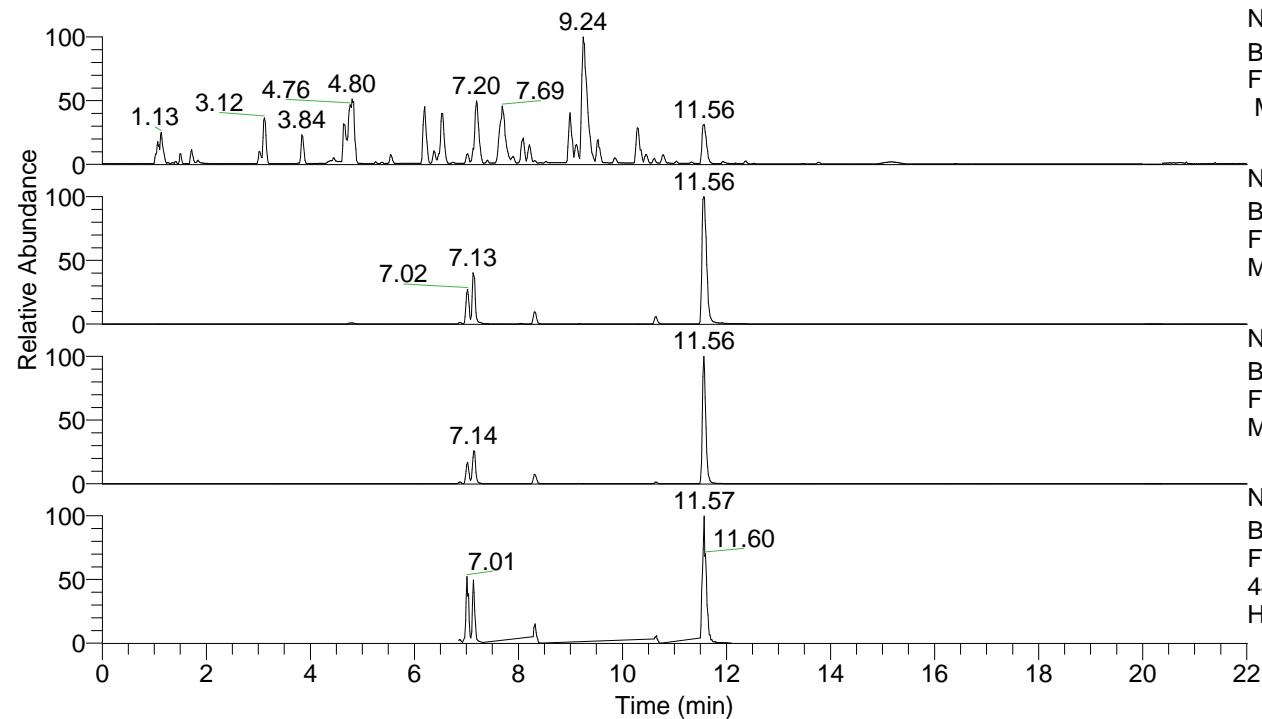


RT: 0.00 - 22.01



NL: 8.52E7
 Base Peak m/z= 100.00000-1500.00000
 F: FTMS + p ESI Full ms [100.00-1500.00]
 MS Hcurta

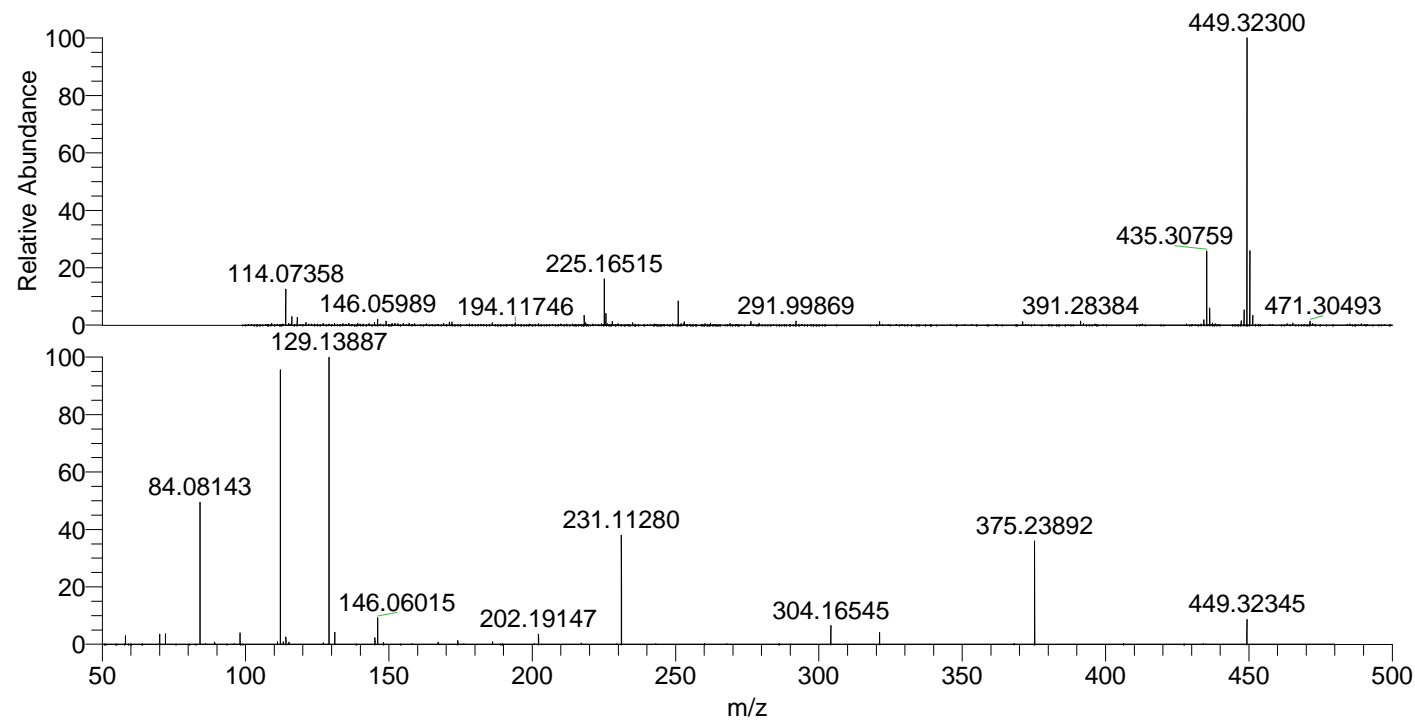
NL: 2.67E7
 Base Peak m/z= 449.31952-449.32850 F:
 FTMS + p ESI Full ms [100.00-1500.00]
 MS Hcurta

NL: 6.56E6
 Base Peak m/z= 225.16367-225.16817 F:
 FTMS + p ESI Full ms [100.00-1500.00]
 MS Hcurta

NL: 2.78E6
 Base Peak m/z= 50.00000-1500.00000 F:
 FTMS + p ESI d Full ms2
 449.32@hcd35.00 [50.00-475.00] MS
 Hcurta

Hcurta#2804-2822 RT: 7.00-7.04 AV: 4
 F: FTMS + p ESI d Full ms2 449.32@h ...
 m/z= 50.00000-1000.00000

m/z	Intensity	Relative
58.06595	29888.8	2.90
70.06592	35748.8	3.47
72.08153	36519.9	3.54
84.08143	506400.9	49.14
89.10781	6906.0	0.67
98.09699	40648.0	3.94
111.10469	8653.7	0.84
112.11252	964266.6	93.57
113.10758	8598.6	0.83
114.09181	25571.1	2.48
115.12343	6866.9	0.67
129.13887	1030477.3	100.00
131.11805	42279.2	4.10
145.13375	23349.6	2.27
146.06015	93408.8	9.06
148.14445	6265.1	0.61
167.15409	7831.3	0.76
174.05477	13299.6	1.29
186.19639	8438.2	0.82
202.19147	35724.1	3.47
231.11280	382113.5	37.08
304.16545	66399.3	6.44
321.19152	40610.1	3.94
375.23892	362241.0	35.15
449.32345	88058.5	8.55



NL: 6.86E6
 Hcurta#2815 RT: 7.02
 AV: 1 T: FTMS + p ESI
 Full lock ms
 [100.00-1500.00]

NL: 1.01E6
 Hcurta#2803-2824 RT:
 7.00-7.04 AV: 4 F: FTMS
 + p ESI d Full ms2
 449.32@hcd35.00
 [50.00-475.00]