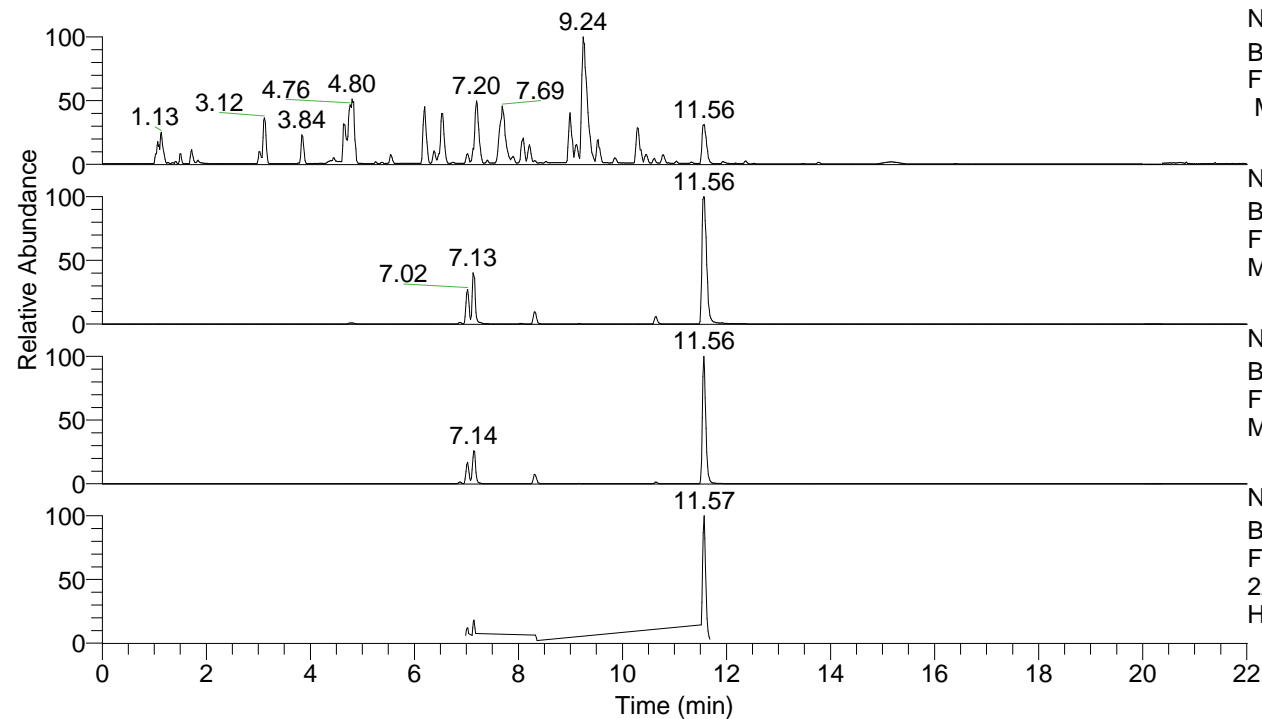


RT: 0.00 - 22.01



NL: 8.52E7
 Base Peak m/z= 100.00000-1500.00000
 F: FTMS + p ESI Full ms [100.00-1500.00]
 MS Hcurta

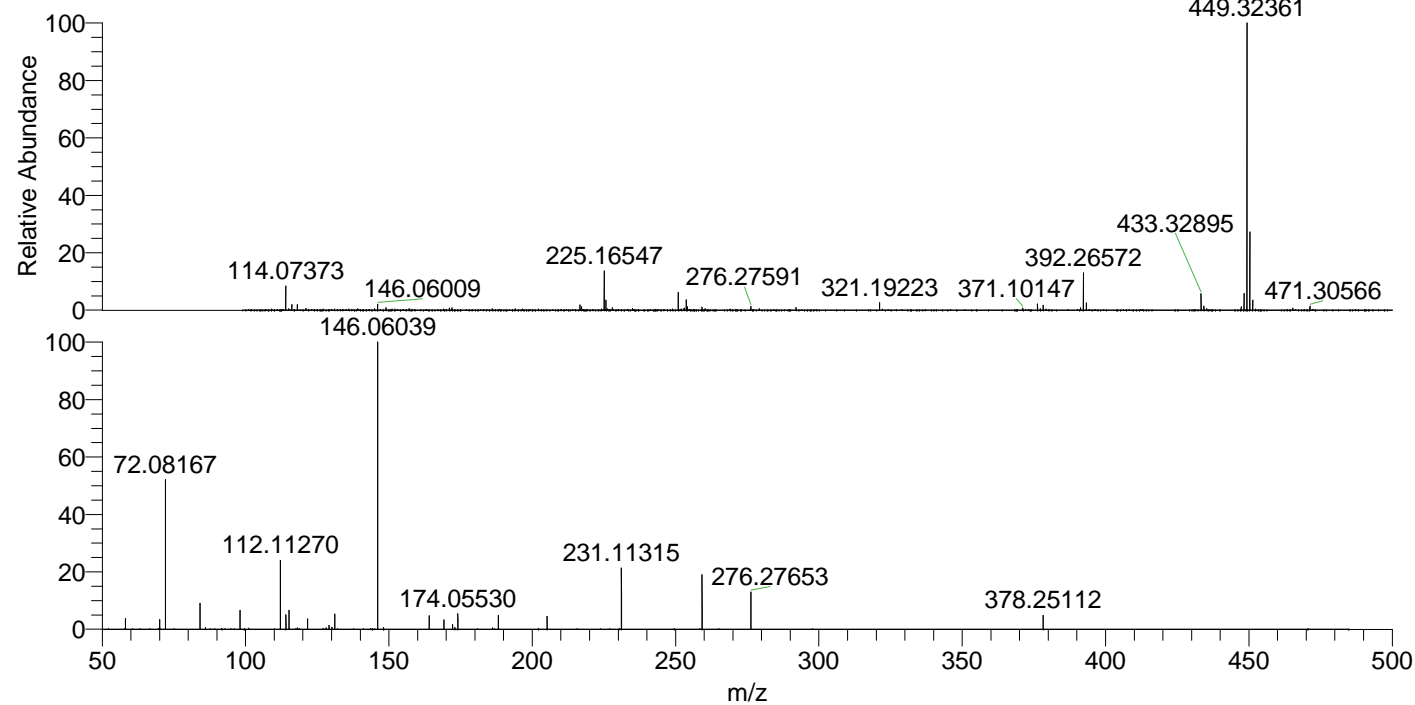
NL: 2.67E7
 Base Peak m/z= 449.31952-449.32850 F:
 FTMS + p ESI Full ms [100.00-1500.00]
 MS Hcurta

NL: 6.56E6
 Base Peak m/z= 225.16367-225.16817 F:
 FTMS + p ESI Full ms [100.00-1500.00]
 MS Hcurta

NL: 2.78E6
 Base Peak m/z= 50.00000-1500.00000 F:
 FTMS + p ESI d Full ms2
 225.16@hcd35.00 [50.00-480.00] MS
 Hcurta

Hcurta#2850-2879 RT: 7.11-7.18 AV: 6
 F: FTMS + p ESI d Full ms2 225.16 ...
 m/z= 50.00000-1000.00000

m/z	Intensity	Relative
58.06603	10678.1	3.37
70.06591	9658.2	3.05
72.08166	166085.8	52.44
84.08158	29252.4	9.24
86.06094	1636.9	0.52
98.09715	21218.3	6.70
112.11268	75912.9	23.97
114.09186	15152.1	4.78
115.12354	20012.8	6.32
121.61556	10462.1	3.30
129.13913	5207.2	1.64
130.12896	1745.8	0.55
131.11825	17102.9	5.40
146.06036	316726.1	100.00
164.07125	15371.1	4.85
169.17068	9135.0	2.88
172.18154	4025.6	1.27
174.05527	17118.6	5.40
188.17606	14687.0	4.64
205.20289	13557.2	4.28
231.11314	69508.0	21.95
259.25000	59266.9	18.71
276.27629	41506.1	13.10
378.25122	15003.1	4.74



NL: 1.01E7
 Hcurta#2857 RT: 7.13
 AV: 1 T: FTMS + p ESI
 Full lock ms
 [100.00-1500.00]

NL: 3.85E5
 Hcurta#2851-2877 RT:
 7.12-7.17 AV: 4 F: FTMS
 + p ESI d Full ms2
 225.16@hcd35.00
 [50.00-480.00]