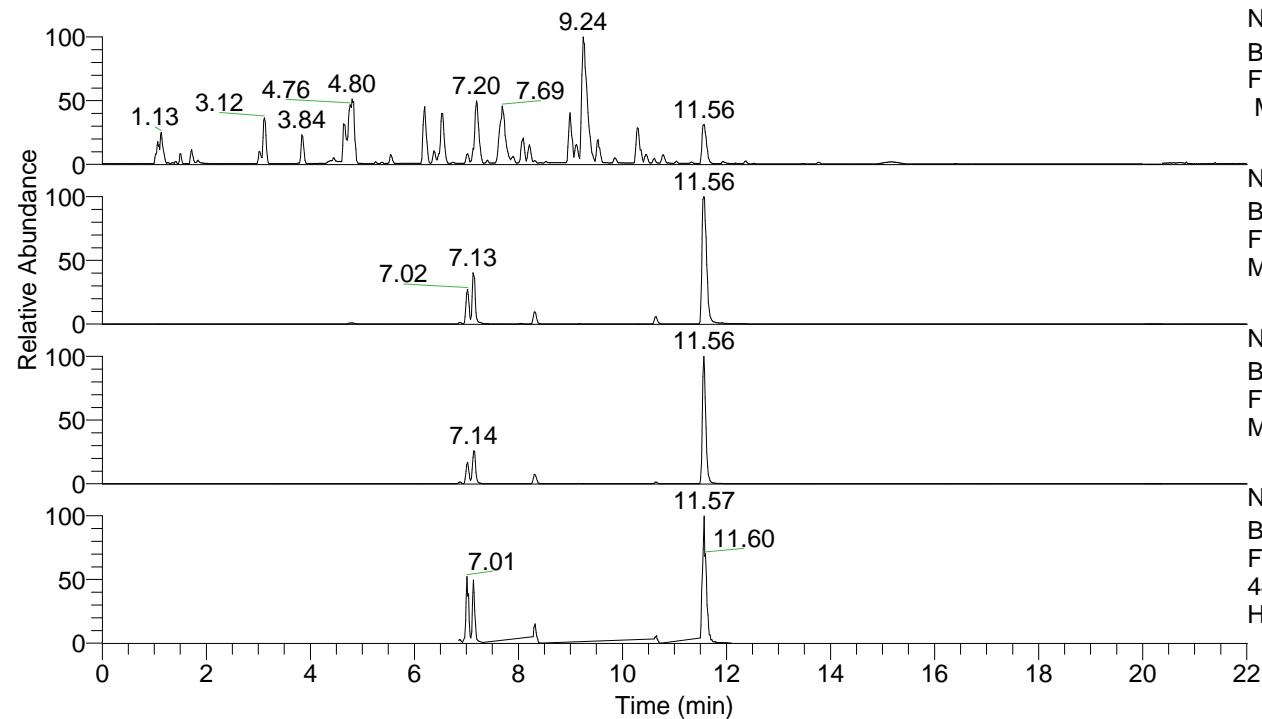


RT: 0.00 - 22.01



NL: 8.52E7  
 Base Peak m/z= 100.00000-1500.00000  
 F: FTMS + p ESI Full ms [100.00-1500.00]  
 MS Hcurta

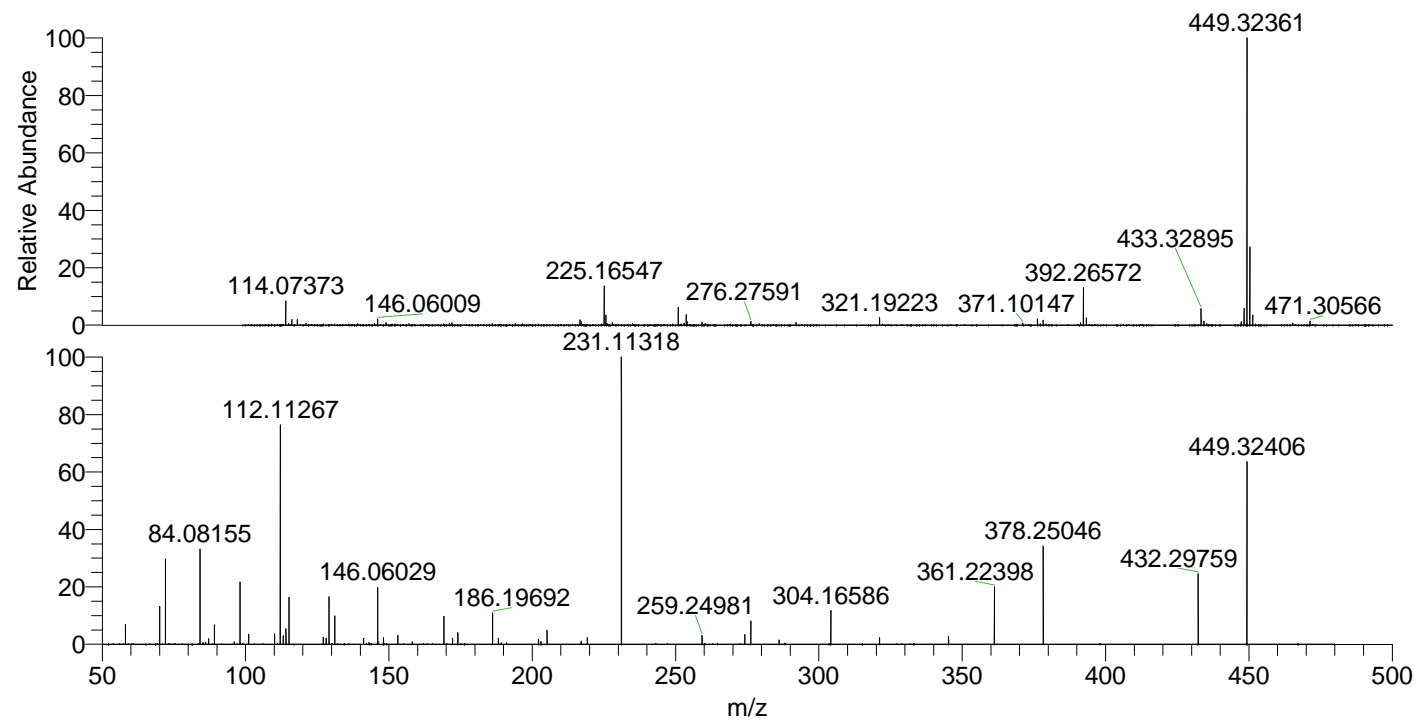
NL: 2.67E7  
 Base Peak m/z= 449.31952-449.32850 F:  
 FTMS + p ESI Full ms [100.00-1500.00]  
 MS Hcurta

NL: 6.56E6  
 Base Peak m/z= 225.16367-225.16817 F:  
 FTMS + p ESI Full ms [100.00-1500.00]  
 MS Hcurta

NL: 2.78E6  
 Base Peak m/z= 50.00000-1500.00000 F:  
 FTMS + p ESI d Full ms2  
 449.32@hcd35.00 [50.00-475.00] MS  
 Hcurta

Hcurta#2853-2870 RT: 7.12-7.16 AV: 4  
 F: FTMS + p ESI d Full ms2 449.32 ...  
 m/z= 50.00000-1000.00000

m/z	Intensity	Relative
58.06608	67682.4	6.98
70.06601	128941.7	13.30
72.08167	293209.0	30.25
84.08155	323888.3	33.42
85.07669	5834.1	0.60
86.06083	7689.2	0.79
87.09234	18867.7	1.95
89.10815	65217.0	6.73
96.08161	8807.2	0.91
98.09713	215223.1	22.21
101.10804	33747.3	3.48
110.09707	36209.6	3.74
112.11267	744185.9	76.79
113.10788	28836.8	2.98
114.09190	54442.2	5.62
115.12353	159492.0	16.46
127.12346	24628.7	2.54
128.10737	20176.5	2.08
129.13893	164964.5	17.02
131.11827	95704.3	9.88
141.13890	19874.6	2.05
143.11778	5964.0	0.62
146.06029	196576.9	20.28
146.16544	8821.7	0.91
148.14476	22066.5	2.28
153.13909	29317.4	3.03
158.16544	8305.7	0.86
169.17018	94469.2	9.75
172.18138	20218.9	2.09
174.05540	39803.5	4.11
186.19692	105469.1	10.88
188.17597	20982.6	2.17
202.19189	16931.1	1.75
203.08168	9289.9	0.96
205.20296	47113.7	4.86
217.09680	10280.8	1.06
219.21853	23102.3	2.38
231.11318	969136.3	100.00
259.24981	31219.3	3.22
274.15560	33664.1	3.47
276.27638	80794.0	8.34
286.15602	14599.1	1.51
304.16586	115328.0	11.90
321.19299	21833.4	2.25
345.22921	26399.8	2.72
361.22398	200272.0	20.66
378.25046	331434.6	34.20
432.29759	243589.4	25.13
449.32406	616450.0	63.61



NL: 1.01E7  
 Hcurta#2857 RT: 7.13  
 AV: 1 T: FTMS + p ESI  
 Full lock ms  
 [100.00-1500.00]

NL: 9.69E5  
 Hcurta#2850-2876 RT:  
 7.12-7.16 AV: 4 F: FTMS  
 + p ESI d Full ms2  
 449.32@hcd35.00  
 [50.00-475.00]