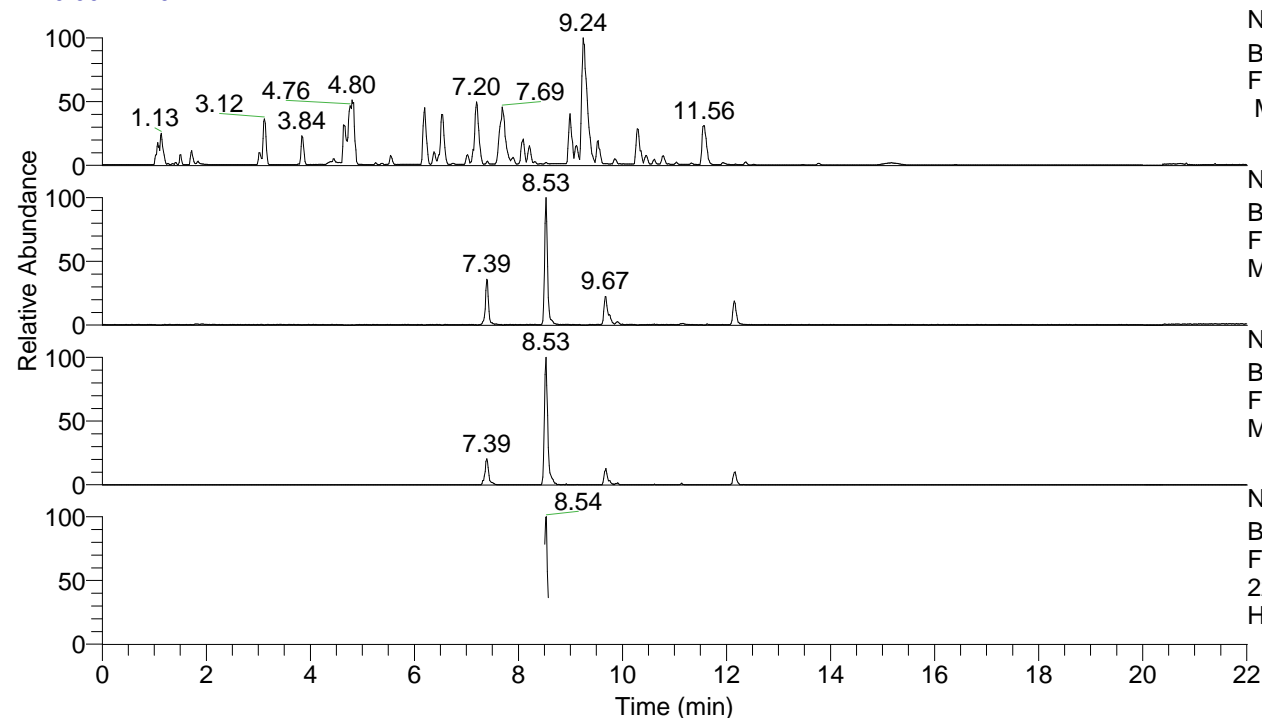


RT: 0.00 - 22.01



NL: 8.52E7
 Base Peak m/z= 100.00000-1500.00000
 F: FTMS + p ESI Full ms [100.00-1500.00]
 MS Hcurta

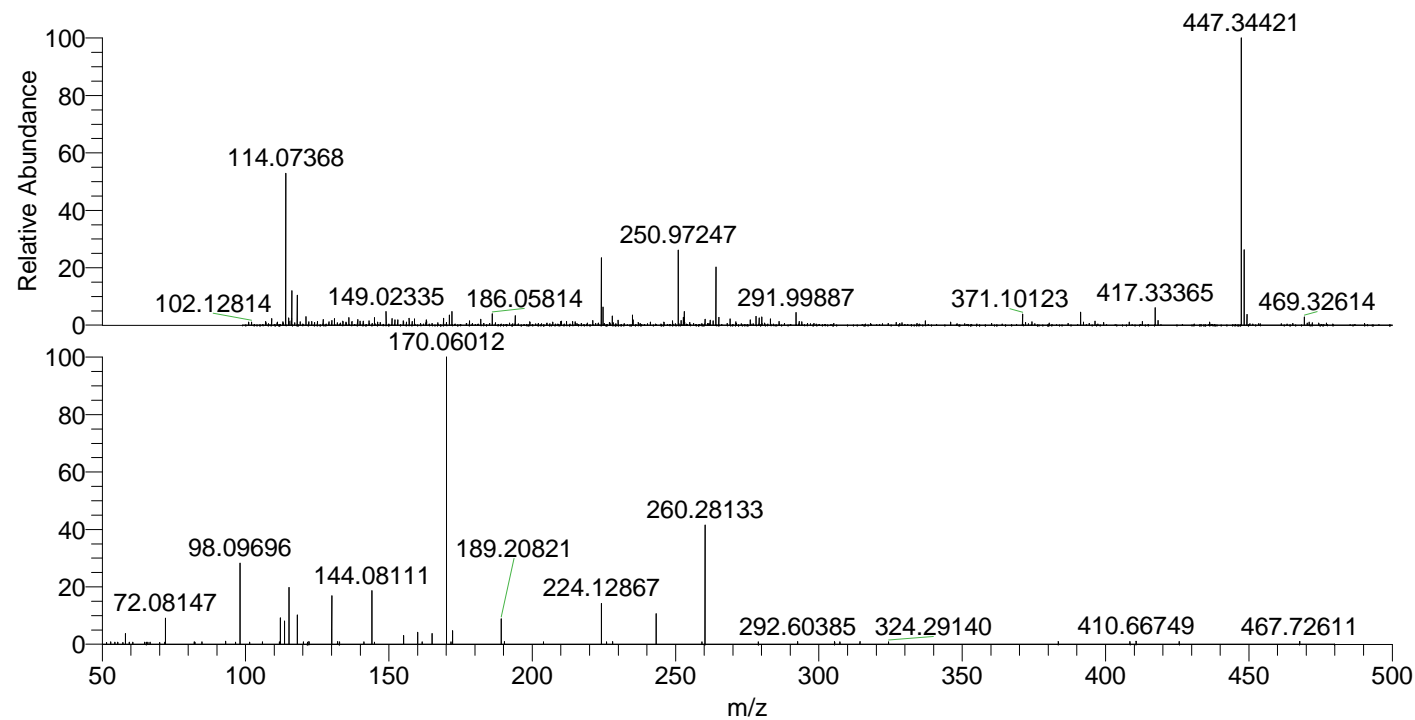
NL: 2.13E6
 Base Peak m/z= 447.34028-447.34922 F:
 FTMS + p ESI Full ms [100.00-1500.00]
 MS Hcurta

NL: 4.77E5
 Base Peak m/z= 224.17405-224.17853 F:
 FTMS + p ESI Full ms [100.00-1500.00]
 MS Hcurta

NL: 9.68E4
 Base Peak m/z= 50.00000-1500.00000 F:
 FTMS + p ESI d Full ms2
 224.18@hcd35.00 [50.00-475.00] MS
 Hcurta

Hcurta#3413-3432 RT: 8.51-8.56 AV: 4
 F: FTMS + p ESI d Full ms2 224.18 ...
 m/z= 50.00000-1000.00000

m/z	Intensity	Relative
51.53470	555.8	0.72
53.00841	545.3	0.71
57.24774	526.6	0.68
58.06602	3307.6	4.28
59.41176	622.4	0.81
60.63121	656.7	0.85
64.78454	582.5	0.75
65.40891	589.4	0.76
65.90272	638.6	0.83
66.65381	640.3	0.83
70.06574	524.6	0.68
71.78074	601.1	0.78
72.08147	8032.5	10.39
82.29117	610.6	0.79
84.76765	719.5	0.93
93.07039	914.1	1.18
96.47218	646.9	0.84
98.09688	21976.8	28.43
101.46161	612.4	0.79
111.78141	688.5	0.89
112.11251	7918.8	10.24
113.61781	7025.6	9.09
115.12353	15287.4	19.78
118.06538	8308.0	10.75
121.58119	658.1	0.85
122.13168	846.1	1.09
122.18996	663.1	0.86
130.06523	14073.5	18.21
132.08117	799.1	1.03
132.74530	696.0	0.90
144.08109	14766.0	19.10
144.99214	645.3	0.83
155.11819	2695.6	3.49
160.07608	3693.3	4.78
161.60850	719.0	0.93
165.05505	2438.6	3.15
170.06011	77301.1	100.00
171.69257	709.4	0.92
172.18110	4145.6	5.36
189.20821	7884.2	10.20
190.30879	819.6	1.06
224.12827	9068.9	11.73
228.03986	813.3	1.05
243.25466	9275.4	12.00
260.28127	32678.4	42.27
278.89409	703.9	0.91
292.60385	819.9	1.06
305.47880	809.6	1.05
307.35086	735.7	0.95
324.29140	780.7	1.01
408.51408	863.5	1.12
425.71104	776.8	1.00
467.72611	848.9	1.10



NL: 2.02E6
 Hcurta#3421 RT: 8.53
 AV: 1 T: FTMS + p ESI
 Full lock ms
 [100.00-1500.00]

NL: 6.88E4
 Hcurta#3379-3476 RT:
 8.51-8.57 AV: 5 F: FTMS
 + p ESI d Full ms2
 224.18@hcd35.00
 [50.00-475.00]