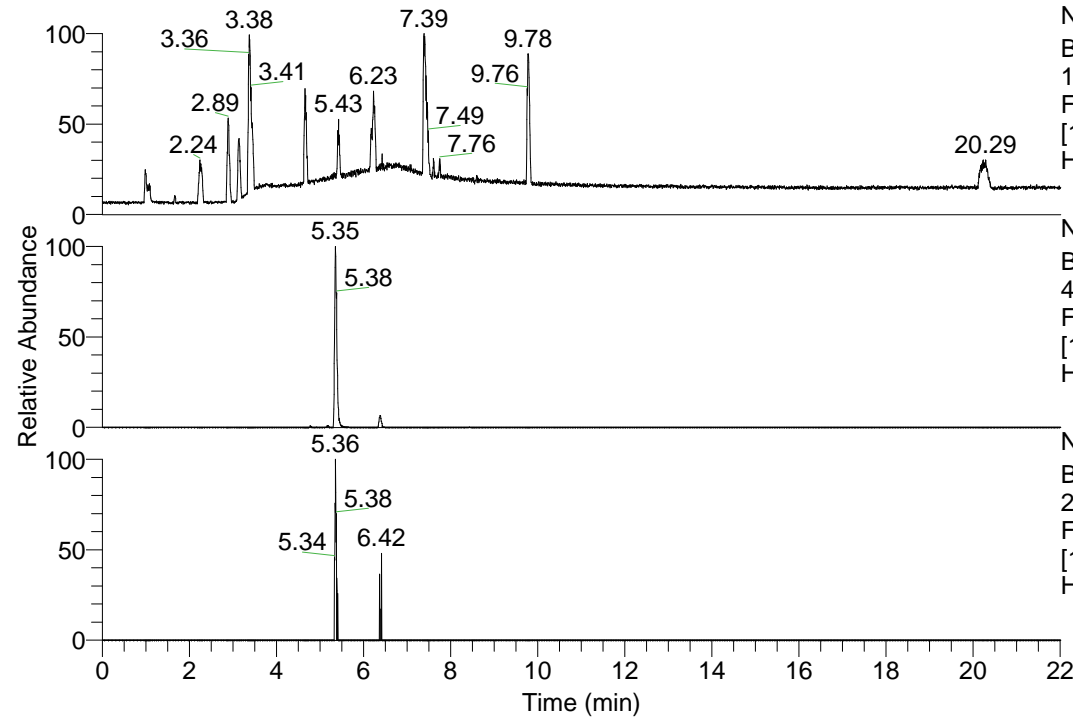


RT: 0.00 - 22.01



NL: 1.13E8  
 Base Peak m/z=  
 100.00000-1500.00000 F:  
 FTMS + p ESI Full ms  
 [100.00-1500.00] MS  
 Hcurta\_HDX

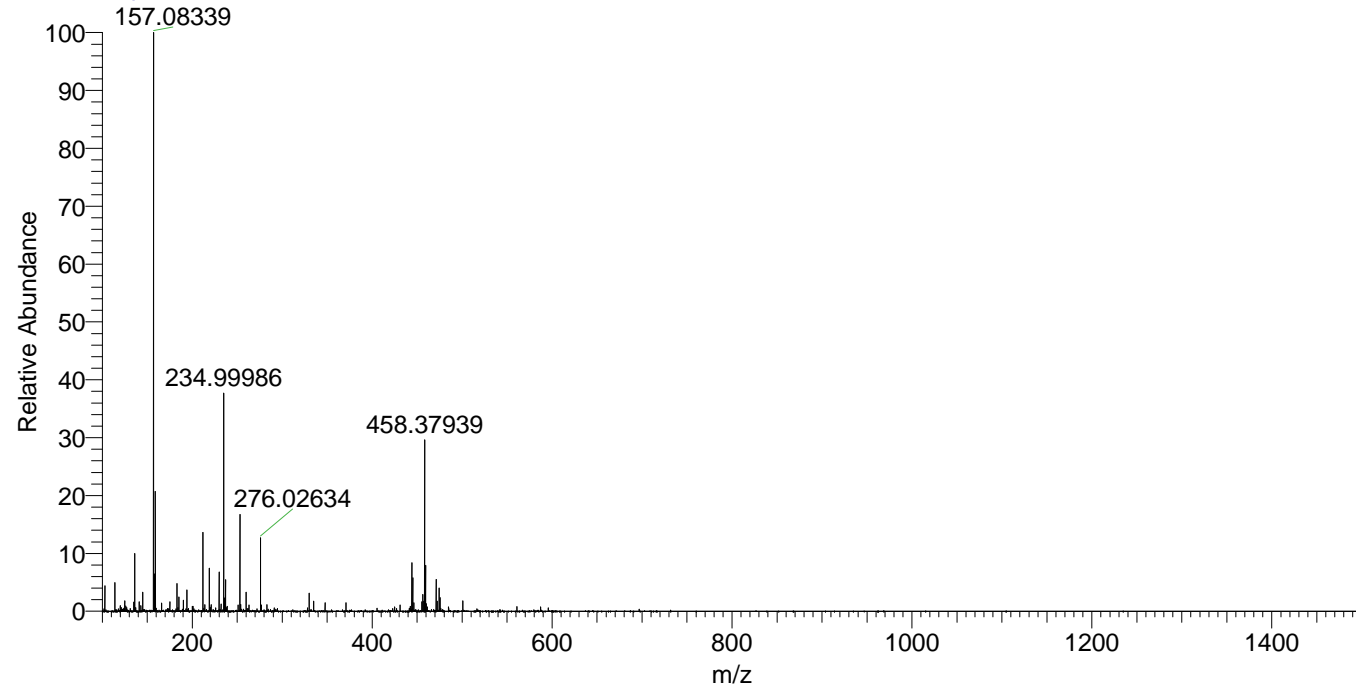
NL: 1.66E6  
 Base Peak m/z=  
 445.34974-445.35420 F:  
 FTMS + p ESI Full ms  
 [100.00-1500.00] MS  
 Hcurta\_HDX

NL: 3.64E4  
 Base Peak m/z=  
 223.68192-223.68416 F:  
 FTMS + p ESI Full ms  
 [100.00-1500.00] MS  
 Hcurta\_HDX

Hcurta\_HDX#846 RT: 5.35  
 T: FTMS + p ESI Full ms [100.00-1500.00]  
 m/z= 445.00000-446.00000

m/z	Intensity	Relative	Delta (ppm)	Composition
445.35086	1471154.9	100.00	-1.25	C <sub>22</sub> H <sub>33</sub> <sup>2</sup> H <sub>7</sub> O <sub>4</sub> N <sub>5</sub>
			2.22	C <sub>22</sub> H <sub>31</sub> <sup>2</sup> H <sub>8</sub> O <sub>4</sub> N <sub>5</sub>
			-4.73	C <sub>22</sub> H <sub>35</sub> <sup>2</sup> H <sub>6</sub> O <sub>4</sub> N <sub>5</sub>

Hcurta\_HDX #846 RT: 5.35 AV: 1 NL: 2.48E7  
 T: FTMS + p ESI Full ms [100.00-1500.00]



Hcurta\_HDX #846 RT: 5.35 AV: 1 NL: 2.08E6  
 T: FTMS + p ESI Full ms [100.00-1500.00]

