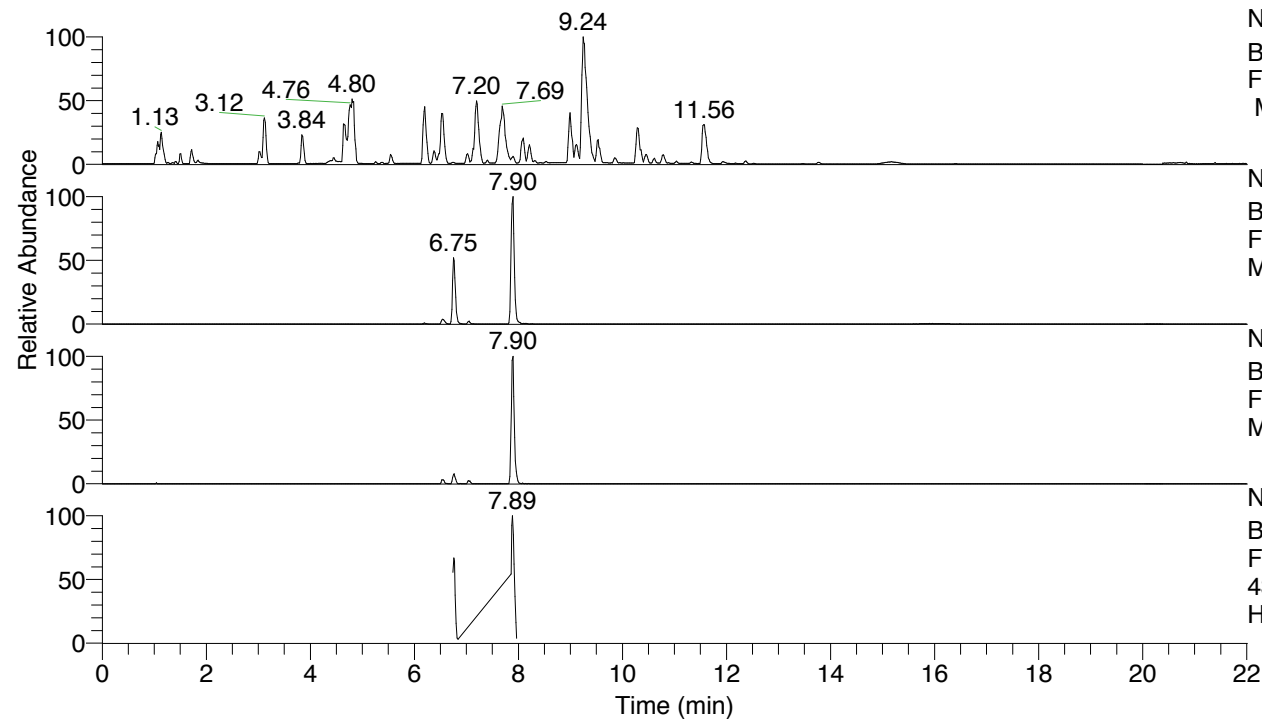


RT: 0.00 - 22.01



NL: 8.52E7
 Base Peak m/z= 100.00000-1500.00000
 F: FTMS + p ESI Full ms [100.00-1500.00]
 MS Hcurta

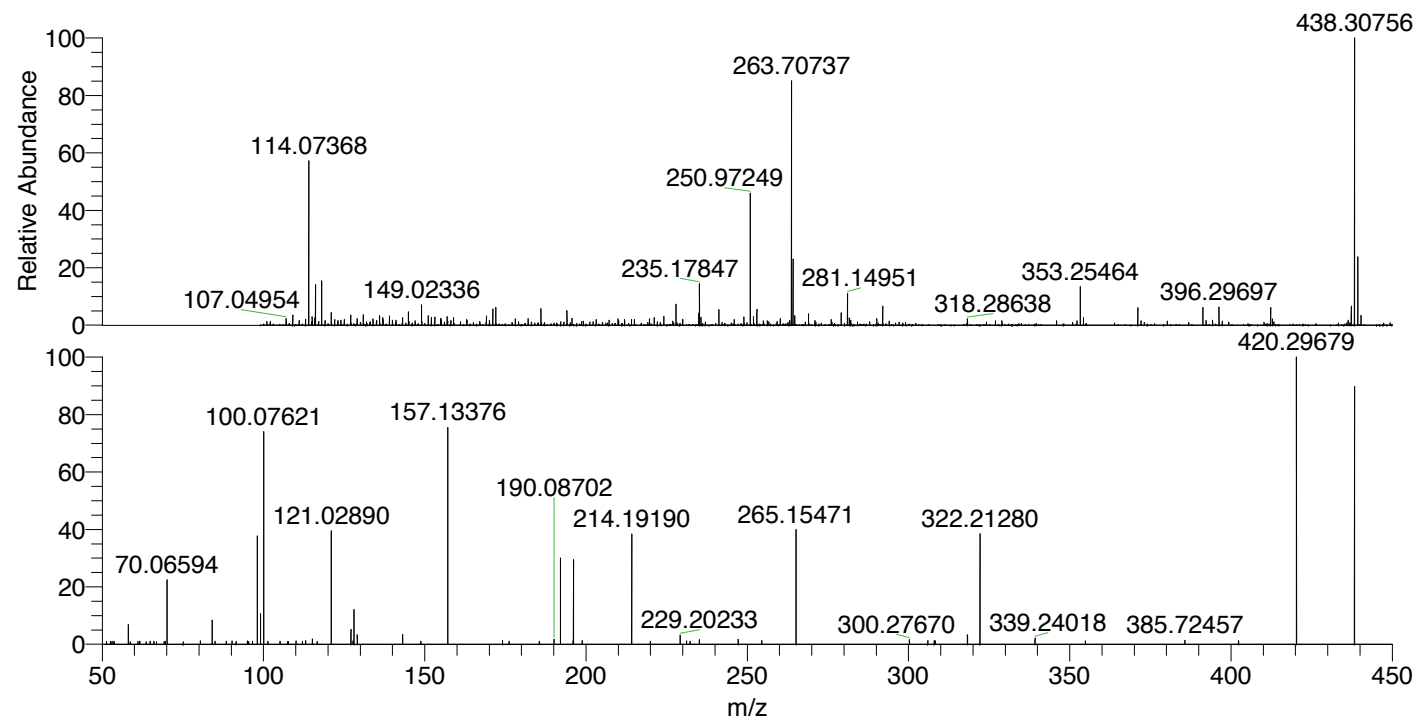
NL: 2.52E6
 Base Peak m/z= 438.30365-438.31241 F:
 FTMS + p ESI Full ms [100.00-1500.00]
 MS Hcurta

NL: 4.02E5
 Base Peak m/z= 219.65573-219.66013 F:
 FTMS + p ESI Full ms [100.00-1500.00]
 MS Hcurta

NL: 1.57E5
 Base Peak m/z= 50.00000-1500.00000 F:
 FTMS + p ESI d Full ms2
 438.31@hcd35.00 [50.00-465.00] MS
 Hcurta

Hcurta#2704-2726 RT: 6.74-6.80 AV: 5
 F: FTMS + p ESI d Full ms2 438.31 ...
 m/z= 50.00000-1000.00000

m/z	Intensity	Relative
53.32531	796.6	1.11
58.06596	4950.4	6.92
64.82393	804.4	1.12
70.06594	16214.6	22.67
80.43582	827.4	1.16
84.08161	6150.9	8.60
88.46712	790.0	1.10
90.26191	811.4	1.13
95.01401	810.5	1.13
96.60368	755.0	1.06
98.09688	28068.9	39.25
99.09225	7683.5	10.74
100.07621	52956.5	74.05
101.36473	758.5	1.06
105.16947	769.8	1.08
110.09818	870.5	1.22
112.11239	800.7	1.12
113.10828	958.6	1.34
115.12349	1356.0	1.90
121.02890	29263.4	40.92
127.12329	3815.8	5.34
127.78473	840.1	1.17
128.10743	8696.4	12.16
129.10264	2388.2	3.34
143.11803	2424.1	3.39
157.13376	54945.0	76.83
174.16039	902.6	1.26
176.16661	789.3	1.10
190.08702	1248.5	1.75
192.10203	21831.7	30.53
196.01967	917.1	1.28
196.18109	21085.5	29.48
198.82293	898.6	1.26
214.19190	27862.2	38.96
219.94365	788.9	1.10
229.20233	2242.0	3.13
231.21687	863.1	1.21
232.28198	780.3	1.09
235.14361	1142.1	1.60
247.21227	1251.5	1.75
254.51086	947.6	1.32
265.15471	28947.0	40.48
300.27670	1117.7	1.56
306.00059	924.2	1.29
307.97835	943.3	1.32
308.31809	851.5	1.19
318.28619	2387.1	3.34
322.17910	798.5	1.12
322.21280	28175.2	39.40
339.24018	1570.9	2.20
354.86054	852.3	1.19
385.72457	972.2	1.36
402.34878	954.3	1.33
420.29679	71516.2	100.00
438.30782	64181.3	89.74



NL: 1.31E6
 Hcurta#2707 RT: 6.75
 AV: 1 T: FTMS + p ESI
 Full lock ms
 [100.00-1500.00]

NL: 7.15E4
 Hcurta#2701-2726 RT:
 6.74-6.80 AV: 5 F: FTMS
 + p ESI d Full ms2
 438.31@hcd35.00
 [50.00-465.00]

Hcurta#2704-2726 RT: 6.74-6.80 AV: 5

F: FTMS + p ESI d Full ms2 438.31@hcd35.00 [50.00-465.00]

m/z= 50.00000-1000.00000

m/z	Intensity	Relative
51.30878	673.1	0.94
52.50150	736.6	1.03
52.77661	653.8	0.91
53.32531	796.6	1.11
53.72781	702.7	0.98
58.06596	4950.4	6.92
58.69386	594.6	0.83
61.04838	654.0	0.91
61.57034	632.8	0.88
61.70394	722.7	1.01
63.60530	628.2	0.88
64.82393	804.4	1.12
66.03667	736.8	1.03
66.79741	612.0	0.86
69.17566	659.1	0.92
69.64116	740.9	1.04
70.06594	16214.6	22.67
75.11338	616.2	0.86
80.43582	827.4	1.16
84.08161	6150.9	8.60
85.02064	745.8	1.04
88.46712	790.0	1.10
90.26191	811.4	1.13
91.48997	725.0	1.01
95.01401	810.5	1.13
95.41480	700.1	0.98
96.60368	755.0	1.06
98.09688	28068.9	39.25
99.09225	7683.5	10.74
100.07621	52956.5	74.05
101.36473	758.5	1.06
105.16947	769.8	1.08
107.49968	712.9	1.00
107.75787	716.6	1.00
110.09818	870.5	1.22
112.11239	800.7	1.12
113.10828	958.6	1.34
115.12349	1356.0	1.90
116.66284	694.9	0.97

Hcurta#2704-2726 RT: 6.74-6.80 AV: 5

F: FTMS + p ESI d Full ms2 438.31@hcd35.00 [50.00-465.00]

m/z= 50.00000-1000.00000

m/z	Intensity	Relative
121.02890	29263.4	40.92
127.12329	3815.8	5.34
127.78473	840.1	1.17
128.10743	8696.4	12.16
129.10264	2388.2	3.34
143.11803	2424.1	3.39
148.82906	751.1	1.05
157.13376	54945.0	76.83
174.16039	902.6	1.26
176.16661	789.3	1.10
185.54132	743.8	1.04
190.08702	1248.5	1.75
192.10203	21831.7	30.53
196.01967	917.1	1.28
196.18109	21085.5	29.48
198.82293	898.6	1.26
214.19190	27862.2	38.96
219.94365	788.9	1.10
229.20233	2242.0	3.13
231.21687	863.1	1.21
232.28198	780.3	1.09
235.14361	1142.1	1.60
247.21227	1251.5	1.75
254.51086	947.6	1.32
265.15471	28947.0	40.48
300.27670	1117.7	1.56
306.00059	924.2	1.29
307.97835	943.3	1.32
308.31809	851.5	1.19
318.28619	2387.1	3.34
322.17910	798.5	1.12
322.21280	28175.2	39.40
339.24018	1570.9	2.20
354.86054	852.3	1.19
385.72457	972.2	1.36
402.34878	954.3	1.33
420.29679	71516.2	100.00
438.30782	64181.3	89.74