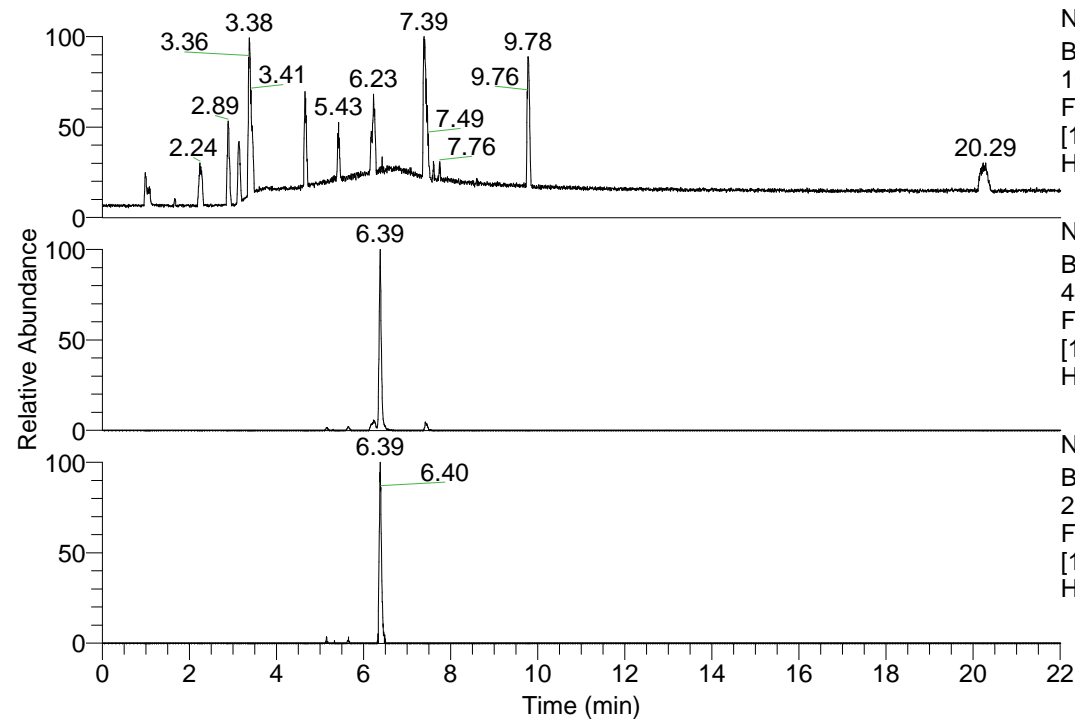


RT: 0.00 - 22.01



NL: 1.13E8
 Base Peak m/z=
 100.00000-1500.00000 F:
 FTMS + p ESI Full ms
 [100.00-1500.00] MS
 Hcurta_HDX

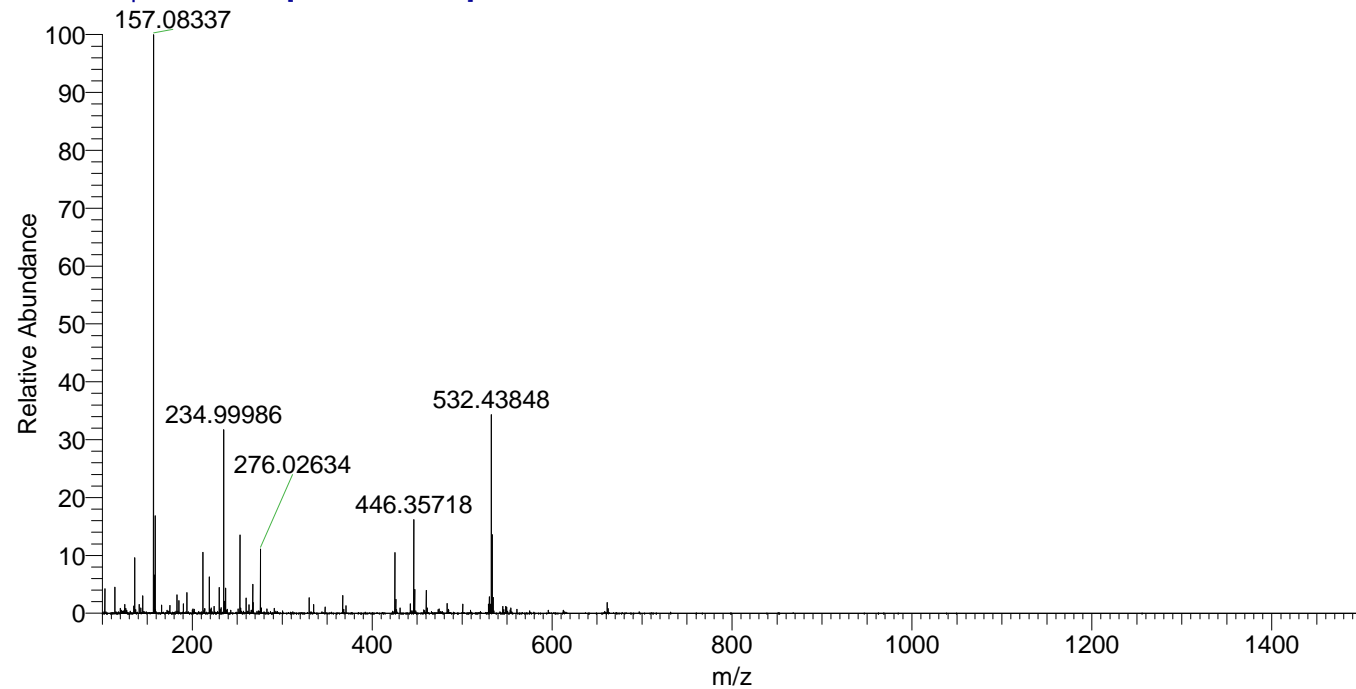
NL: 5.28E6
 Base Peak m/z=
 446.35602-446.36048 F:
 FTMS + p ESI Full ms
 [100.00-1500.00] MS
 Hcurta_HDX

NL: 3.75E5
 Base Peak m/z=
 224.18505-224.18729 F:
 FTMS + p ESI Full ms
 [100.00-1500.00] MS
 Hcurta_HDX

Hcurta_HDX#1022 RT: 6.39
 T: FTMS + p ESI Full ms [100.00-1500.00]
 m/z= 446.00000-447.00000

m/z	Intensity	Relative	Delta (ppm)	Composition
446.35718	4342295.0	100.00	-1.16	C ₂₂ H ₃₂ ² H ₈ O ₄ N ₅
			2.31	C ₂₂ H ₃₀ ² H ₉ O ₄ N ₅
			-4.63	C ₂₂ H ₃₄ ² H ₇ O ₄ N ₅

Hcurta_HDX #1022 RT: 6.39 AV: 1 NL: 2.68E7
 T: FTMS + p ESI Full ms [100.00-1500.00]



Hcurta_HDX #1022 RT: 6.39 AV: 1 NL: 4.34E6
 T: FTMS + p ESI Full ms [100.00-1500.00]

