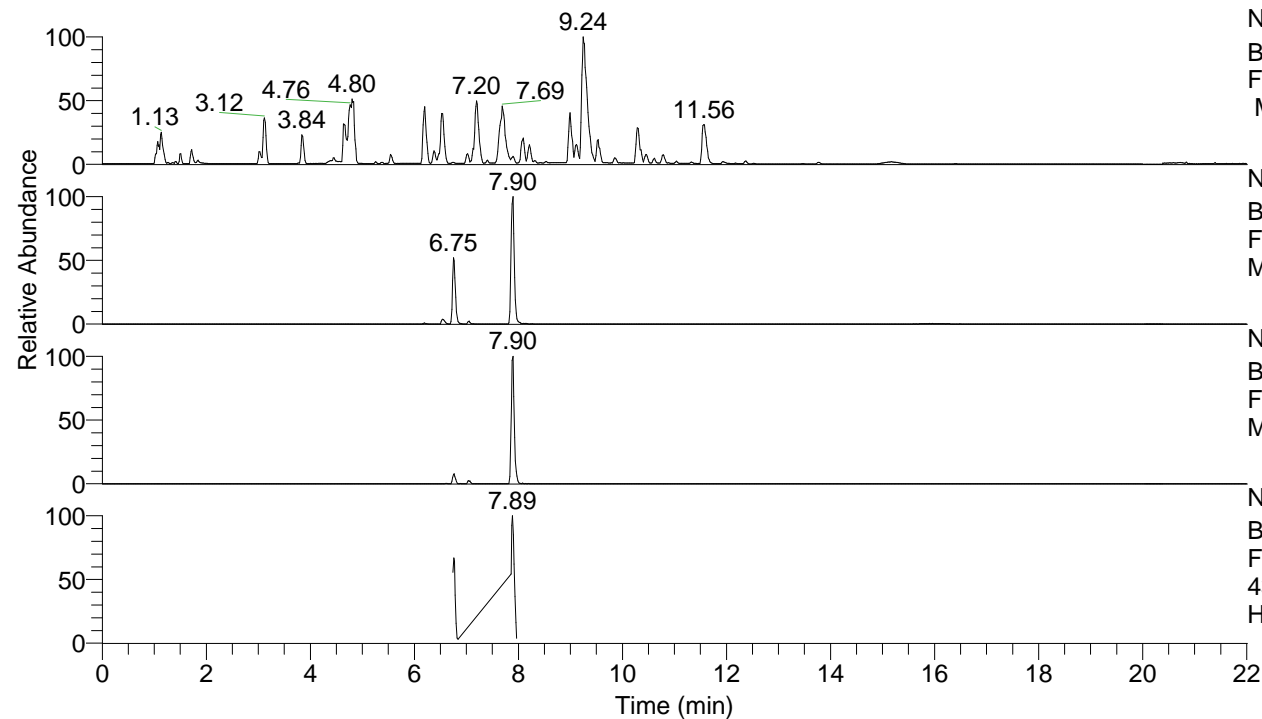


RT: 0.00 - 22.01



NL: 8.52E7
 Base Peak m/z= 100.00000-1500.00000
 F: FTMS + p ESI Full ms [100.00-1500.00]
 MS Hcurta

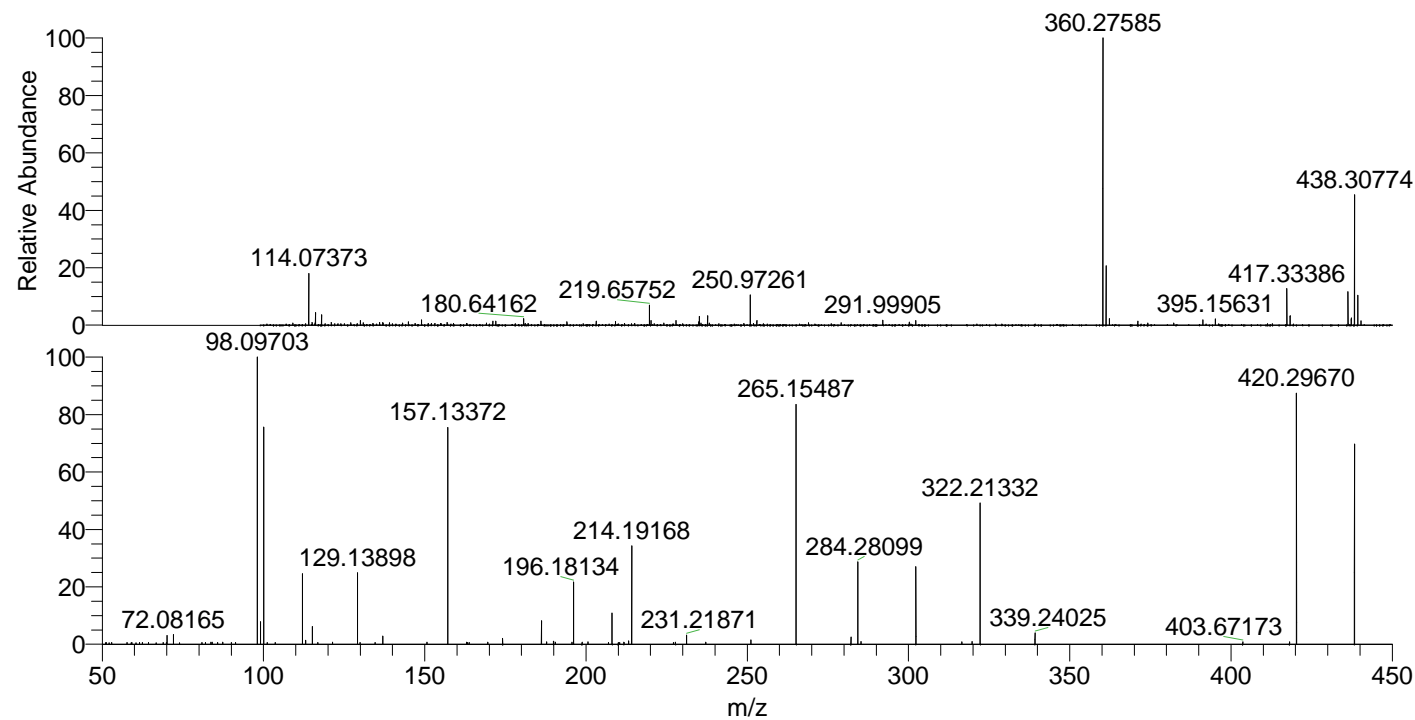
NL: 2.52E6
 Base Peak m/z= 438.30584-438.31022 F:
 FTMS + p ESI Full ms [100.00-1500.00]
 MS Hcurta

NL: 4.02E5
 Base Peak m/z= 219.65683-219.65903 F:
 FTMS + p ESI Full ms [100.00-1500.00]
 MS Hcurta

NL: 1.57E5
 Base Peak m/z= 50.00000-1500.00000 F:
 FTMS + p ESI d Full ms2
 438.31@hcd35.00 [50.00-465.00] MS
 Hcurta

Hcurta#3155-3177 RT: 7.86-7.92 AV: 5
 F: FTMS + p ESI d Full ms2 438.31 ...
 m/z= 50.00000-1000.00000

m/z	Intensity	Relative
70.06590	3689.7	3.12
72.08165	4032.7	3.41
83.73544	886.9	0.75
84.08143	928.8	0.78
87.35376	870.6	0.74
98.09703	118350.4	100.00
98.10317	1011.6	0.85
99.09245	9375.2	7.92
100.07623	91464.7	77.28
112.10608	850.1	0.72
112.11261	29423.6	24.86
113.10785	1678.6	1.42
115.12351	7408.3	6.26
121.42744	853.0	0.72
129.13898	29541.4	24.96
137.02407	3428.0	2.90
150.66577	869.5	0.73
157.13372	89384.4	75.53
162.97204	849.0	0.72
163.75916	798.1	0.67
169.52205	862.7	0.73
174.16060	2444.1	2.07
186.19742	9999.6	8.45
187.78131	951.2	0.80
189.94929	1202.5	1.02
190.49343	827.8	0.70
195.65611	830.5	0.70
196.18134	26448.9	22.35
198.79395	837.4	0.71
200.63213	1029.7	0.87
208.09758	13407.5	11.33
210.01081	786.7	0.66
210.45295	784.6	0.66
211.78176	874.2	0.74
213.20957	1326.4	1.12
214.19168	41760.7	35.29
227.12691	797.5	0.67
227.75156	806.6	0.68
231.21871	3781.4	3.20
237.12412	847.6	0.72
251.13995	1797.2	1.52
265.15487	99210.3	83.83
282.18151	2945.4	2.49
284.28099	34541.8	29.19
285.26784	1126.1	0.95
302.29146	32934.9	27.83
316.55899	954.3	0.81
319.71509	1177.0	0.99
322.21332	58617.7	49.53
339.24025	4689.6	3.96
403.67173	1014.9	0.86
418.18089	988.4	0.84
420.29670	105562.9	89.20
438.30752	84245.8	71.18
463.71812	982.9	0.83



NL: 5.49E6
 Hcurta#3169 RT: 7.90
 AV: 1 T: FTMS + p ESI
 Full lock ms
 [100.00-1500.00]

NL: 1.18E5
 Hcurta#3155-3182 RT:
 7.86-7.92 AV: 5 F: FTMS
 + p ESI d Full ms2
 438.31@hcd35.00
 [50.00-465.00]