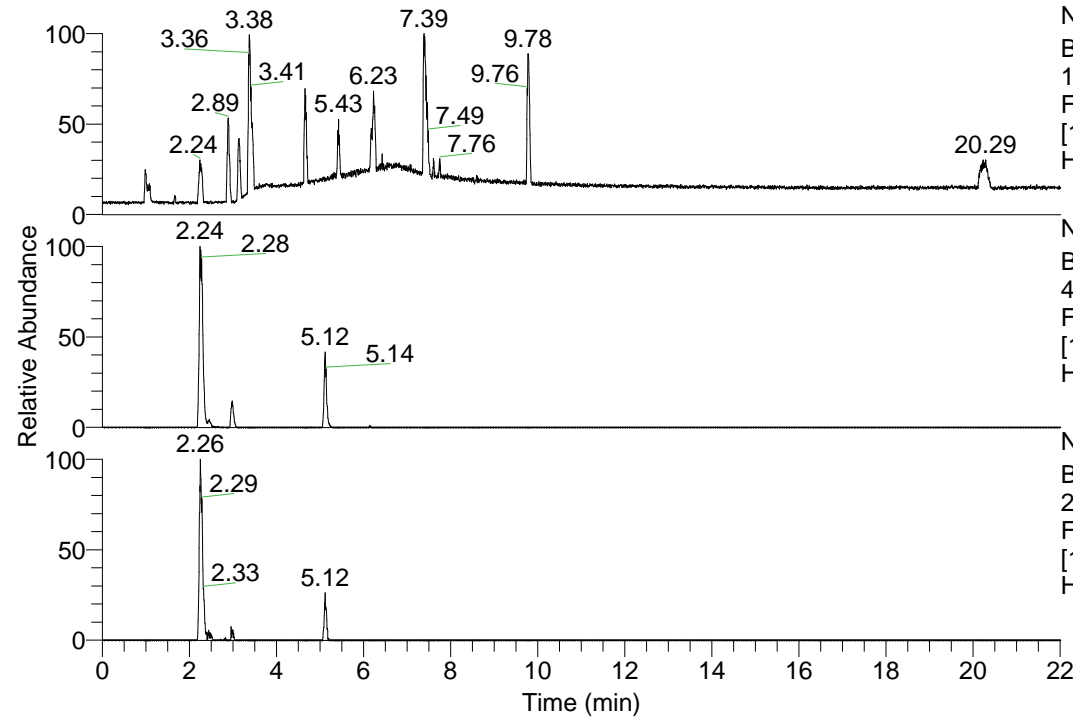


RT: 0.00 - 22.01



NL: 1.13E8
Base Peak m/z=
100.00000-1500.00000 F:
FTMS + p ESI Full ms
[100.00-1500.00] MS
Hcurta_HDX

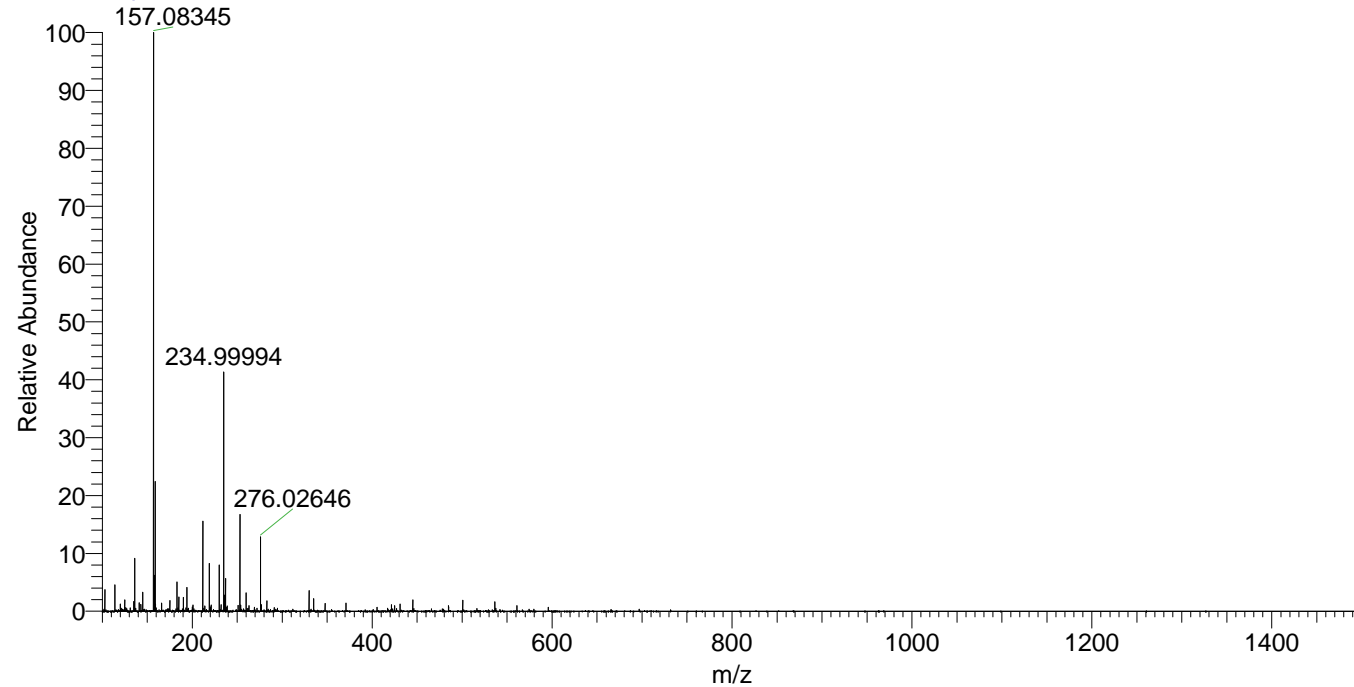
NL: 1.11E6
Base Peak m/z=
445.40839-445.41285 F:
FTMS + p ESI Full ms
[100.00-1500.00] MS
Hcurta_HDX

NL: 2.83E5
Base Peak m/z=
223.71124-223.71348 F:
FTMS + p ESI Full ms
[100.00-1500.00] MS
Hcurta_HDX

Hcurta_HDX#809 RT: 5.12
T: FTMS + p ESI Full ms [100.00-1500.00]
m/z= 445.00000-446.00000

m/z	Intensity	Relative	Delta (ppm)	Composition
445.40973	461510.5	100.00	-0.75	C ₂₃ H ₃₇ ² H ₈ O ₂ N ₆
			2.72	C ₂₃ H ₃₅ ² H ₉ O ₂ N ₆
			-4.23	C ₂₃ H ₃₉ ² H ₇ O ₂ N ₆

Hcurta_HDX #809 RT: 5.12 AV: 1 NL: 2.25E7
T: FTMS + p ESI Full ms [100.00-1500.00]



Hcurta_HDX #809 RT: 5.12 AV: 1 NL: 4.46E5
T: FTMS + p ESI Full ms [100.00-1500.00]

