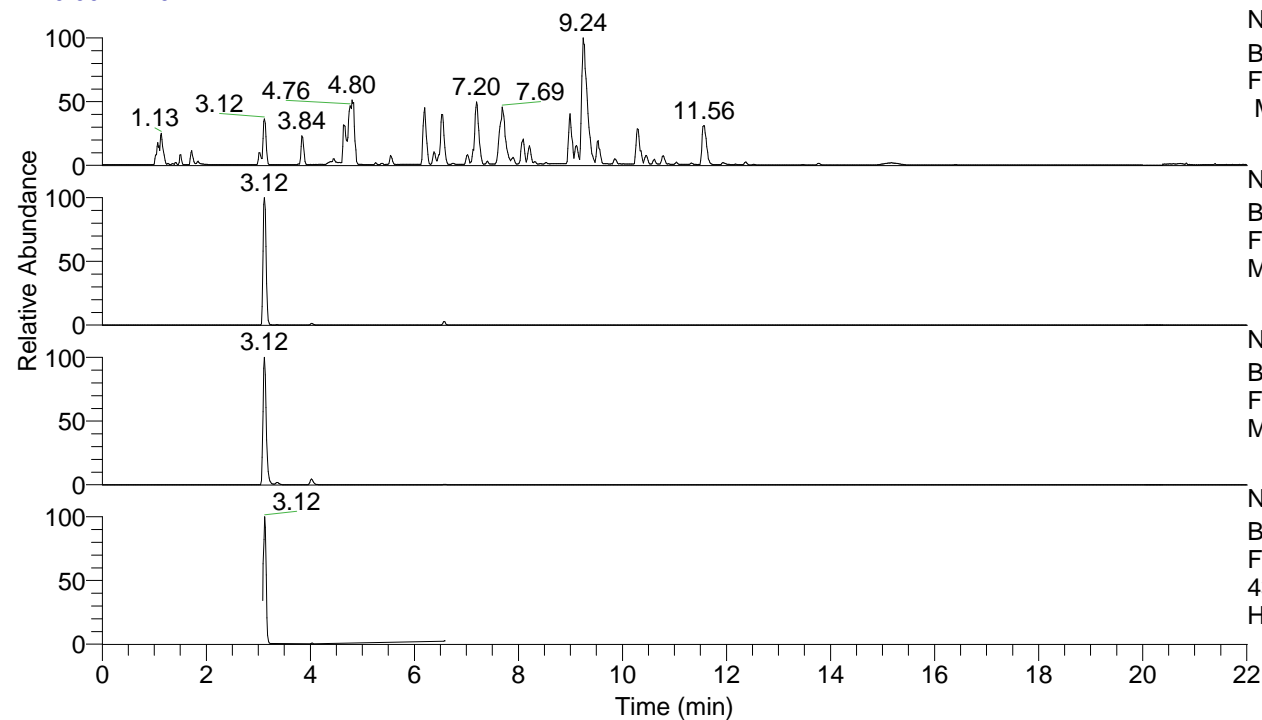


RT: 0.00 - 22.01



NL: 8.52E7  
 Base Peak m/z= 100.00000-1500.00000  
 F: FTMS + p ESI Full ms [100.00-1500.00]  
 MS Hcurta

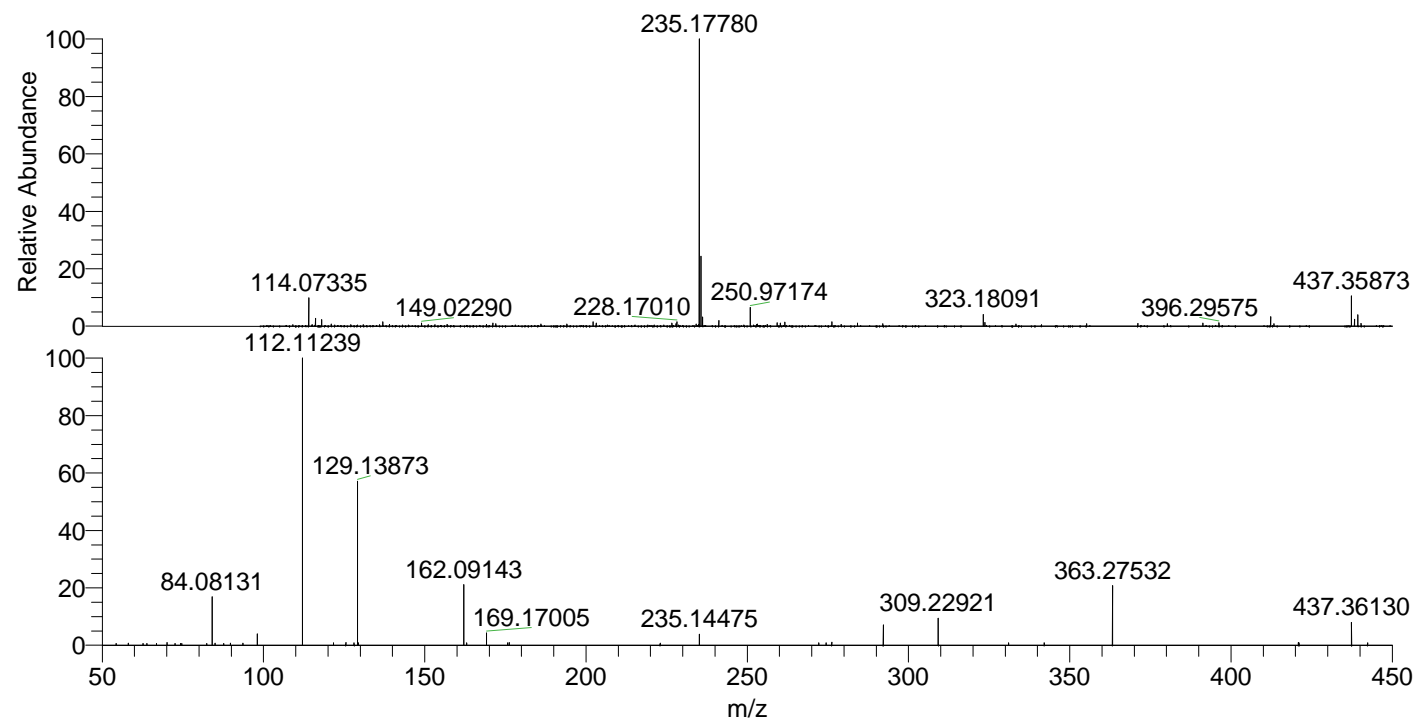
NL: 3.11E7  
 Base Peak m/z= 437.35603-437.36477 F:  
 FTMS + p ESI Full ms [100.00-1500.00]  
 MS Hcurta

NL: 8.76E6  
 Base Peak m/z= 219.18192-219.18630 F:  
 FTMS + p ESI Full ms [100.00-1500.00]  
 MS Hcurta

NL: 6.71E6  
 Base Peak m/z= 50.00000-1500.00000 F:  
 FTMS + p ESI d Full ms2  
 437.36@hcd35.00 [50.00-465.00] MS  
 Hcurta

Hcurta#2634-2645 RT: 6.57-6.59 AV: 3  
 F: FTMS + p ESI d Full ms2 437.36 ...  
 m/z= 50.00000-1000.00000

m/z	Intensity	Relative
54.33473	1126.9	0.66
58.11333	1199.9	0.71
62.66720	1067.1	0.63
63.83285	1131.5	0.66
66.84617	1004.4	0.59
70.06591	1683.3	0.99
72.58521	1076.4	0.63
74.22635	1042.3	0.61
74.66210	1019.3	0.60
82.38884	1061.6	0.62
84.08131	28782.5	16.91
84.12922	1157.4	0.68
85.01686	1163.0	0.68
87.68364	1101.5	0.65
89.71311	1262.4	0.74
93.60808	1159.9	0.68
98.09707	6802.3	4.00
112.11239	170180.8	100.00
121.67133	1424.8	0.84
125.53615	1659.4	0.98
128.10714	1391.5	0.82
129.13873	100438.9	59.02
129.49381	1412.8	0.83
162.09143	36091.8	21.21
163.02698	1359.7	0.80
169.17005	7378.2	4.34
175.71849	1523.0	0.89
176.22337	1620.0	0.95
223.00742	1217.6	0.72
235.14475	6562.4	3.86
272.20556	1443.8	0.85
274.48574	1390.2	0.82
276.20757	1795.5	1.06
292.20300	12271.0	7.21
309.22921	15967.6	9.38
331.04162	1409.3	0.83
342.10417	1464.9	0.86
363.27532	35692.6	20.97
420.91870	1688.6	0.99
421.09215	1501.8	0.88
437.36130	13523.6	7.95
442.37584	1401.2	0.82



NL: 8.68E6  
 Hcurta#2635 RT: 6.57  
 AV: 1 T: FTMS + p ESI  
 Full ms [100.00-1500.00]

NL: 1.69E5  
 Hcurta#2545-2655 RT:  
 6.57-6.59 AV: 3 F: FTMS  
 + p ESI d Full ms2  
 437.36@hcd35.00  
 [50.00-465.00]