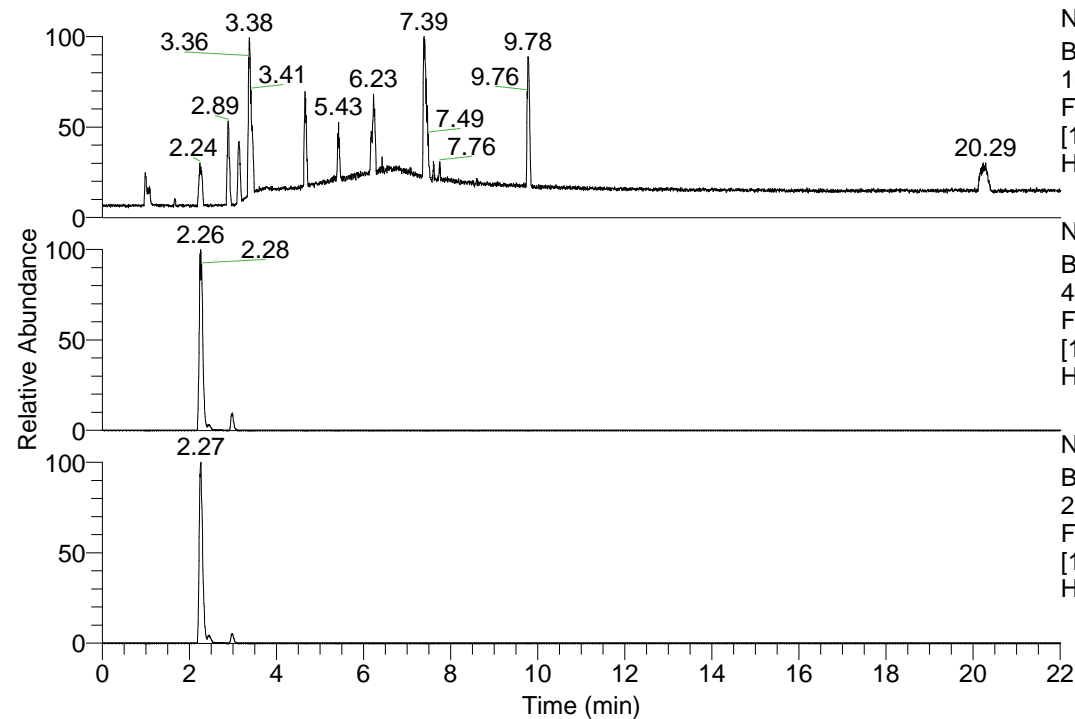


RT: 0.00 - 22.01



NL: 1.13E8
 Base Peak m/z=
 100.00000-1500.00000 F:
 FTMS + p ESI Full ms
 [100.00-1500.00] MS
 Hcurta_HDX

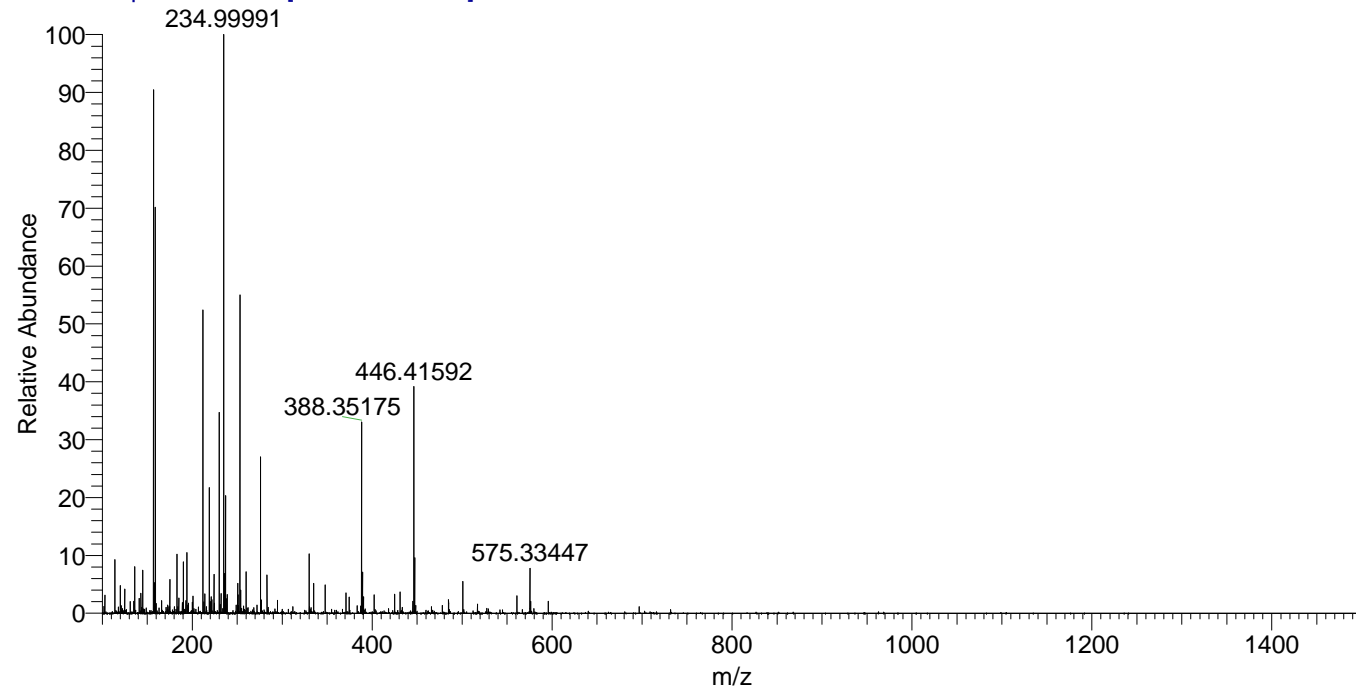
NL: 3.19E7
 Base Peak m/z=
 446.41466-446.41912 F:
 FTMS + p ESI Full ms
 [100.00-1500.00] MS
 Hcurta_HDX

NL: 1.01E7
 Base Peak m/z=
 224.21438-224.21662 F:
 FTMS + p ESI Full ms
 [100.00-1500.00] MS
 Hcurta_HDX

Hcurta_HDX#459 RT: 2.99
 T: FTMS + p ESI Full ms [100.00-1500.00]
 m/z= 446.00000-447.00000

m/z	Intensity	Relative	Delta (ppm)	Composition
446.41592	3078398.0	100.00	-0.94	C ₂₃ H ₃₆ ² H ₉ O ₂ N ₆
			2.53	C ₂₃ H ₃₄ ² H ₁₀ O ₂ N ₆
			-4.40	C ₂₃ H ₃₈ ² H ₈ O ₂ N ₆

Hcurta_HDX #459 RT: 2.99 AV: 1 NL: 7.65E6
 T: FTMS + p ESI Full ms [100.00-1500.00]



Hcurta_HDX #459 RT: 2.99 AV: 1 NL: 3.00E6
 T: FTMS + p ESI Full ms [100.00-1500.00]

