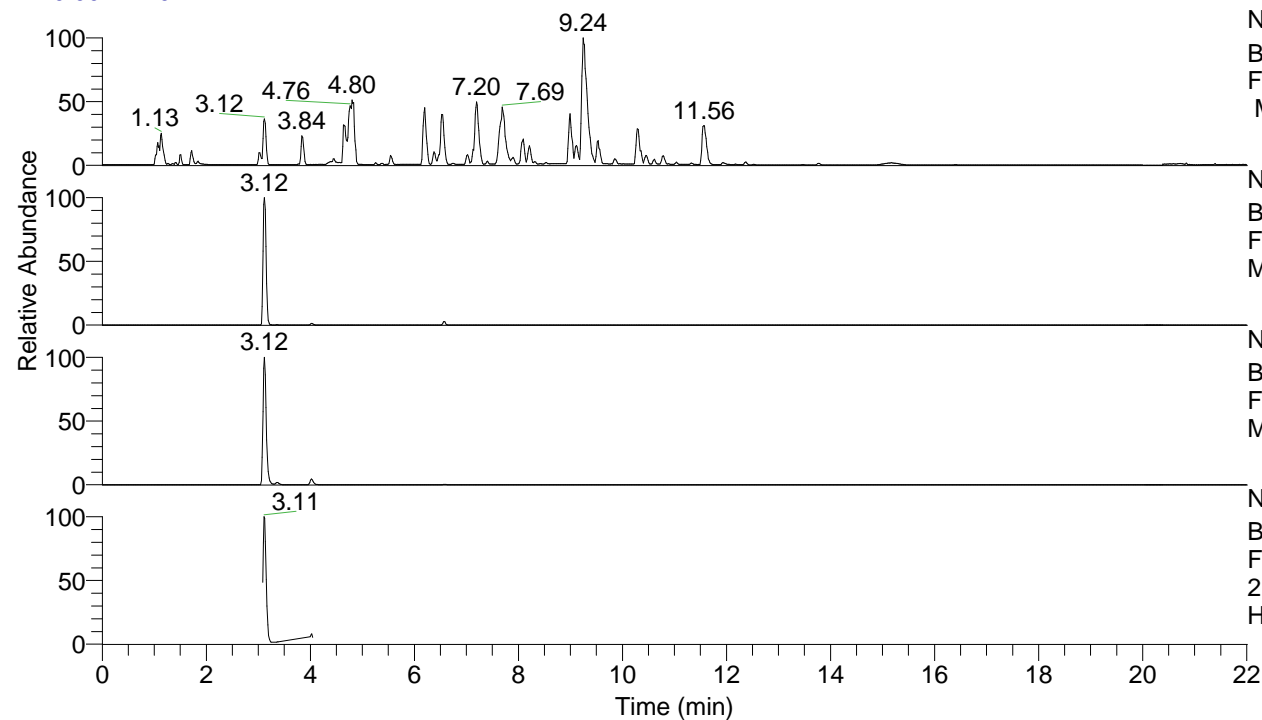


RT: 0.00 - 22.01



NL: 8.52E7
 Base Peak m/z= 100.00000-1500.00000
 F: FTMS + p ESI Full ms [100.00-1500.00]
 MS Hcurta

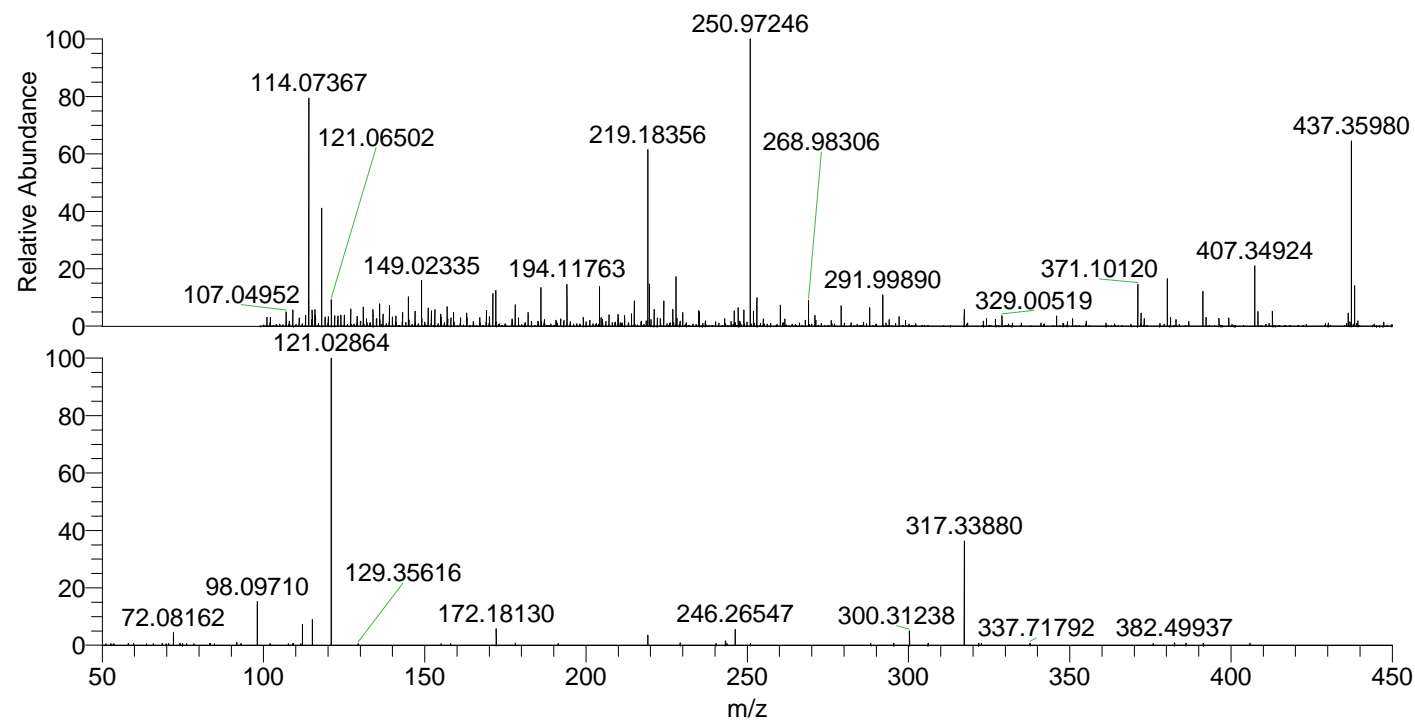
NL: 3.11E7
 Base Peak m/z= 437.35603-437.36477 F:
 FTMS + p ESI Full ms [100.00-1500.00]
 MS Hcurta

NL: 8.76E6
 Base Peak m/z= 219.18192-219.18630 F:
 FTMS + p ESI Full ms [100.00-1500.00]
 MS Hcurta

NL: 1.79E6
 Base Peak m/z= 50.00000-1500.00000 F:
 FTMS + p ESI d Full ms2
 219.18@hcd35.00 [50.00-465.00] MS
 Hcurta

Hcurta#1601-1619 RT: 4.00-4.04 AV: 4
 F: FTMS + p ESI d Full ms2 219.18 ...
 m/z= 50.00000-1000.00000

m/z	Intensity	Relative
58.06624	709.2	0.64
63.77018	575.4	0.52
65.78800	572.9	0.51
68.59123	633.2	0.57
68.67924	587.6	0.53
70.59991	694.6	0.62
72.08162	4782.7	4.28
74.03481	665.3	0.60
74.91615	590.0	0.53
76.15560	620.1	0.56
78.44786	594.0	0.53
83.26258	654.5	0.59
83.47740	619.0	0.55
83.57648	622.5	0.56
84.76091	599.0	0.54
91.75840	1195.2	1.07
93.05314	659.8	0.59
98.09710	16611.9	14.88
102.02020	714.7	0.64
107.75454	582.6	0.52
109.13672	620.6	0.56
109.27750	665.0	0.60
111.61055	601.6	0.54
112.11265	7982.6	7.15
115.12344	9749.1	8.73
121.02864	111654.4	100.00
129.35616	599.5	0.54
155.05547	594.9	0.53
158.01838	718.7	0.64
172.18130	6269.9	5.62
178.08711	814.5	0.73
191.36693	662.5	0.59
219.17565	3866.7	3.46
229.23880	884.8	0.79
240.36549	702.4	0.63
243.25394	1591.0	1.42
243.67346	732.2	0.66
246.26547	5978.6	5.35
251.00003	678.7	0.61
288.29374	746.5	0.67
295.44436	830.7	0.74
300.31238	5422.4	4.86
306.09593	740.3	0.66
317.33880	39558.5	35.43
321.79016	828.4	0.74
322.60273	758.8	0.68
337.71792	800.1	0.72
375.89628	724.0	0.65
382.49937	854.0	0.76
386.06966	770.2	0.69
391.41143	754.8	0.68
405.88186	770.1	0.69
454.06114	772.8	0.69



NL: 6.28E5
 Hcurta#1609 RT: 4.02
 AV: 1 T: FTMS + p ESI
 Full lock ms
 [100.00-1500.00]

NL: 1.09E5
 Hcurta#1600-1620 RT:
 4.00-4.04 AV: 4 F: FTMS
 + p ESI d Full ms2
 219.18@hcd35.00
 [50.00-465.00]