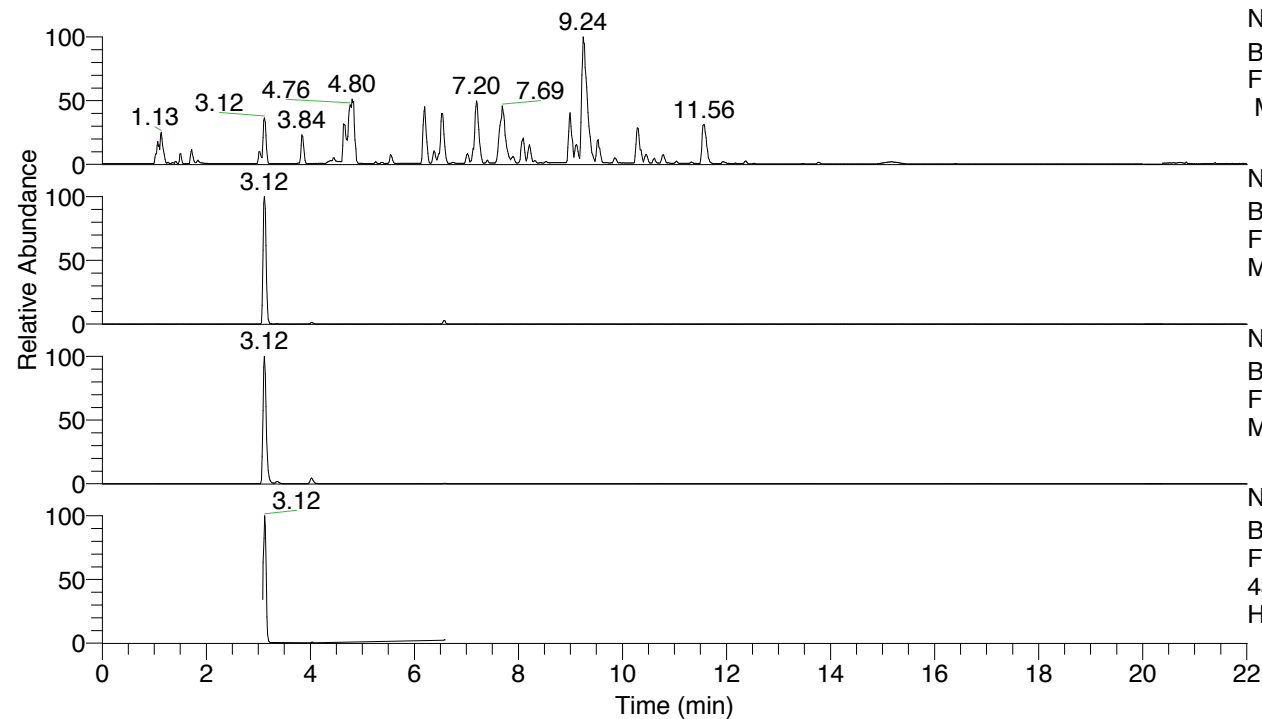


RT: 0.00 - 22.01



NL: 8.52E7
 Base Peak m/z= 100.00000-1500.00000
 F: FTMS + p ESI Full ms [100.00-1500.00]
 MS Hcurta

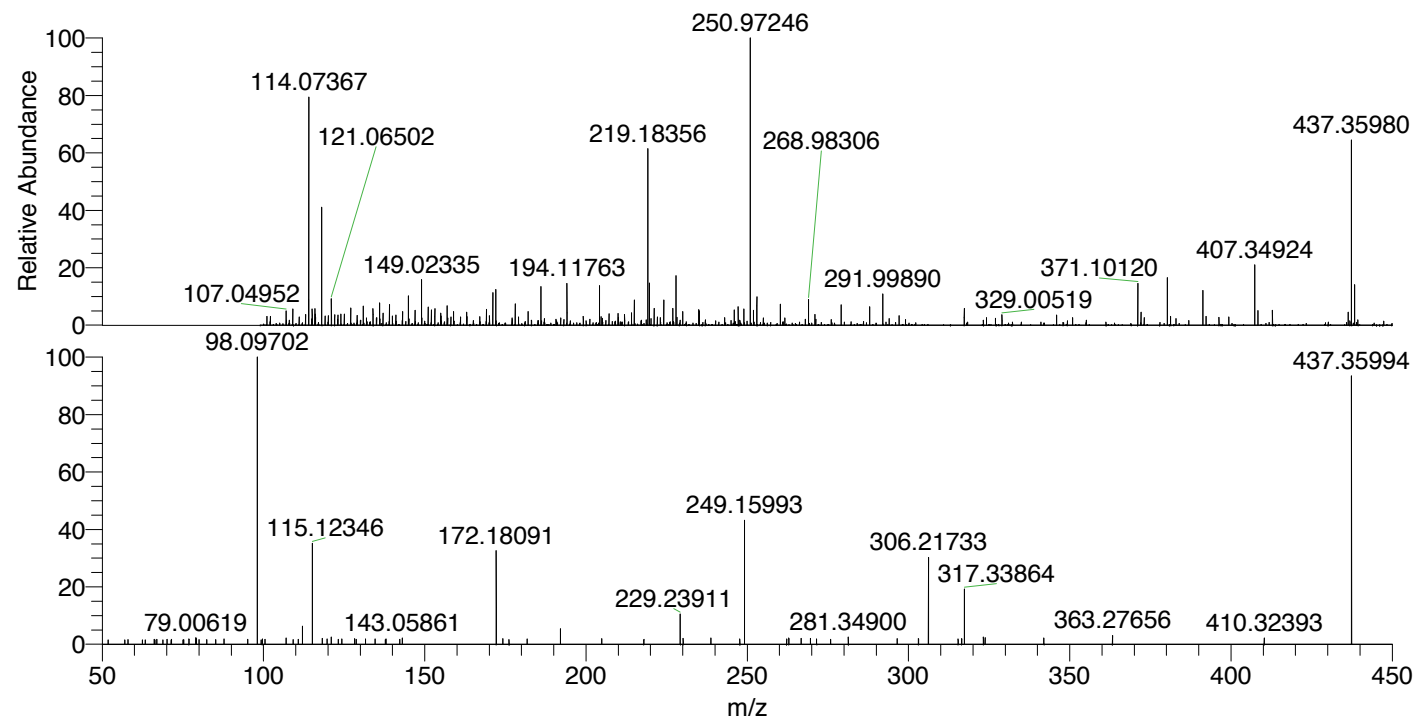
NL: 3.11E7
 Base Peak m/z= 437.35603-437.36477 F:
 FTMS + p ESI Full ms [100.00-1500.00]
 MS Hcurta

NL: 8.76E6
 Base Peak m/z= 219.18192-219.18630 F:
 FTMS + p ESI Full ms [100.00-1500.00]
 MS Hcurta

NL: 6.71E6
 Base Peak m/z= 50.00000-1500.00000 F:
 FTMS + p ESI d Full ms2
 437.36@hcd35.00 [50.00-465.00] MS
 Hcurta

Hcurta#1602-1625 RT: 4.00-4.06 AV: 5
 F: FTMS + p ESI d Full ms2 437.36 ...
 m/z= 50.00000-1000.00000

m/z	Intensity	Relative
66.12161	732.2	1.75
66.92936	724.9	1.73
71.49792	737.1	1.76
76.89814	773.9	1.85
79.00619	958.7	2.29
79.11914	856.9	2.05
87.79859	783.3	1.87
95.15004	729.6	1.74
98.09702	41879.0	100.00
99.63009	756.8	1.81
100.43382	718.7	1.72
106.99706	902.2	2.15
112.11243	2644.3	6.31
115.12346	14626.6	34.93
118.28042	843.9	2.02
119.76315	771.4	1.84
121.02820	1043.9	2.49
123.21543	733.3	1.75
124.29037	757.4	1.81
128.28230	840.6	2.01
128.75533	719.3	1.72
131.61662	771.4	1.84
134.63728	783.6	1.87
137.99972	795.8	1.90
142.28962	719.6	1.72
143.05861	897.2	2.14
172.18091	13641.8	32.57
174.20573	820.8	1.96
181.78289	756.0	1.81
192.10234	2322.7	5.55
204.90886	837.3	2.00
229.23911	4533.5	10.83
230.14172	864.2	2.06
238.70880	934.8	2.23
247.70519	750.7	1.79
249.15993	18023.7	43.04
262.22376	785.6	1.88
262.89993	911.5	2.18
266.70765	889.4	2.12
269.59449	872.2	2.08
271.51918	773.3	1.85
275.87920	751.6	1.79
281.34900	1067.5	2.55
296.52316	824.3	1.97
303.10086	833.2	1.99
306.21733	12577.5	30.03
315.40307	781.5	1.87
316.49984	808.5	1.93
317.33864	7977.0	19.05
323.24540	1048.2	2.50
323.78066	977.6	2.33
341.97823	907.6	2.17
363.27656	1294.3	3.09
410.32393	904.6	2.16
437.35994	39004.7	93.14



NL: 6.28E5
 Hcurta#1609 RT: 4.02
 AV: 1 T: FTMS + p ESI
 Full lock ms
 [100.00-1500.00]

NL: 4.16E4
 Hcurta#1601-1627 RT:
 4.00-4.06 AV: 5 F: FTMS
 + p ESI d Full ms2
 437.36@hcd35.00
 [50.00-465.00]

Hcurta#1602-1625 RT: 4.00-4.06 AV: 5

F: FTMS + p ESI d Full ms2 437.36@hcd35.00 [50.00-465.00]

m/z= 50.00000-1000.00000

m/z	Intensity	Relative
51.82653	651.7	1.56
56.96615	647.4	1.55
57.96061	695.4	1.66
62.45786	612.5	1.46
63.38589	617.1	1.47
66.12161	732.2	1.75
66.34819	633.2	1.51
66.92936	724.9	1.73
68.81747	612.8	1.46
70.06579	699.7	1.67
71.39519	629.3	1.50
71.49792	737.1	1.76
75.03688	639.4	1.53
75.28223	678.6	1.62
76.89814	773.9	1.85
79.00619	958.7	2.29
79.11914	856.9	2.05
79.19732	642.6	1.53
80.04653	660.5	1.58
82.44942	691.9	1.65
85.21977	694.2	1.66
87.79859	783.3	1.87
95.15004	729.6	1.74
98.09702	41879.0	100.00
99.26025	627.0	1.50
99.63009	756.8	1.81
100.43382	718.7	1.72
106.99706	902.2	2.15
109.23187	694.4	1.66
110.75859	708.1	1.69
112.11243	2644.3	6.31
115.12346	14626.6	34.93
118.28042	843.9	2.02
119.76315	771.4	1.84
121.02820	1043.9	2.49
123.21543	733.3	1.75
124.29037	757.4	1.81
128.28230	840.6	2.01
128.75533	719.3	1.72

Hcurta#1602-1625 RT: 4.00-4.06 AV: 5

F: FTMS + p ESI d Full ms2 437.36@hcd35.00 [50.00-465.00]

m/z= 50.00000-1000.00000

m/z	Intensity	Relative
131.61662	771.4	1.84
134.63728	783.6	1.87
137.75842	682.9	1.63
137.99972	795.8	1.90
142.28962	719.6	1.72
143.05861	897.2	2.14
172.18091	13641.8	32.57
174.20573	820.8	1.96
176.14633	705.9	1.69
181.78289	756.0	1.81
192.10234	2322.7	5.55
204.90886	837.3	2.00
217.94269	714.1	1.71
229.23911	4533.5	10.83
230.14172	864.2	2.06
238.70880	934.8	2.23
247.70519	750.7	1.79
249.15993	18023.7	43.04
262.22376	785.6	1.88
262.89993	911.5	2.18
266.70765	889.4	2.12
269.59449	872.2	2.08
271.51918	773.3	1.85
275.87920	751.6	1.79
281.34900	1067.5	2.55
296.52316	824.3	1.97
303.10086	833.2	1.99
306.21733	12577.5	30.03
315.40307	781.5	1.87
316.49984	808.5	1.93
317.33864	7977.0	19.05
323.24540	1048.2	2.50
323.78066	977.6	2.33
341.97823	907.6	2.17
363.27656	1294.3	3.09
410.32393	904.6	2.16
437.35994	39004.7	93.14