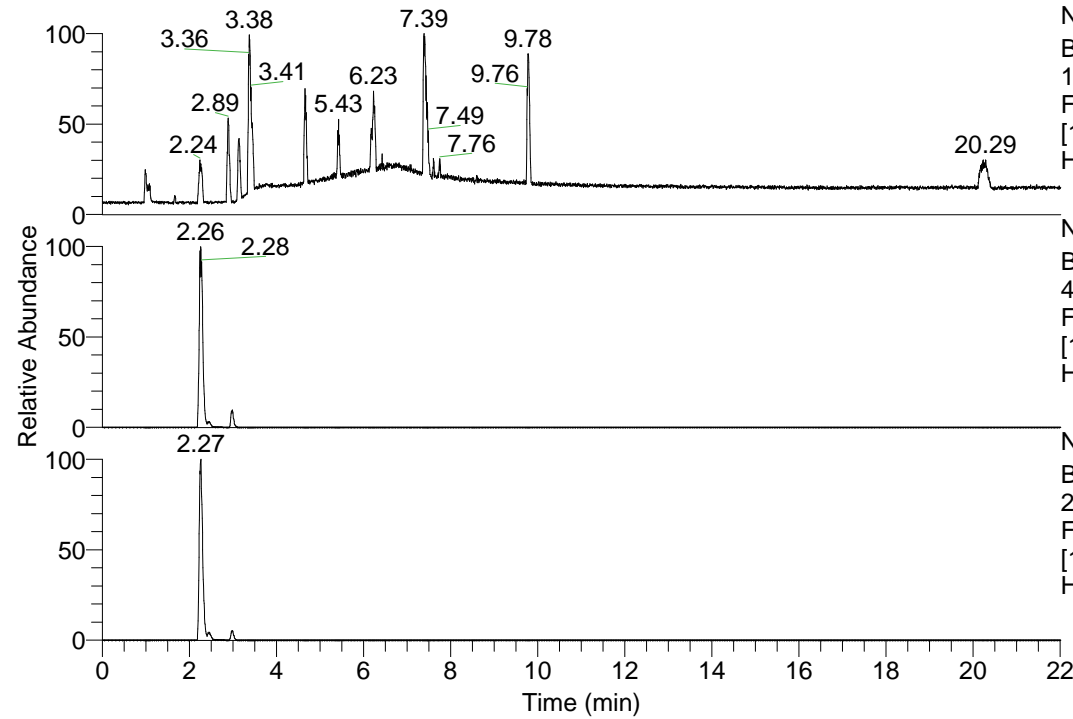


RT: 0.00 - 22.01



NL: 1.13E8
 Base Peak m/z=
 100.00000-1500.00000 F:
 FTMS + p ESI Full ms
 [100.00-1500.00] MS
 Hcurta_HDX

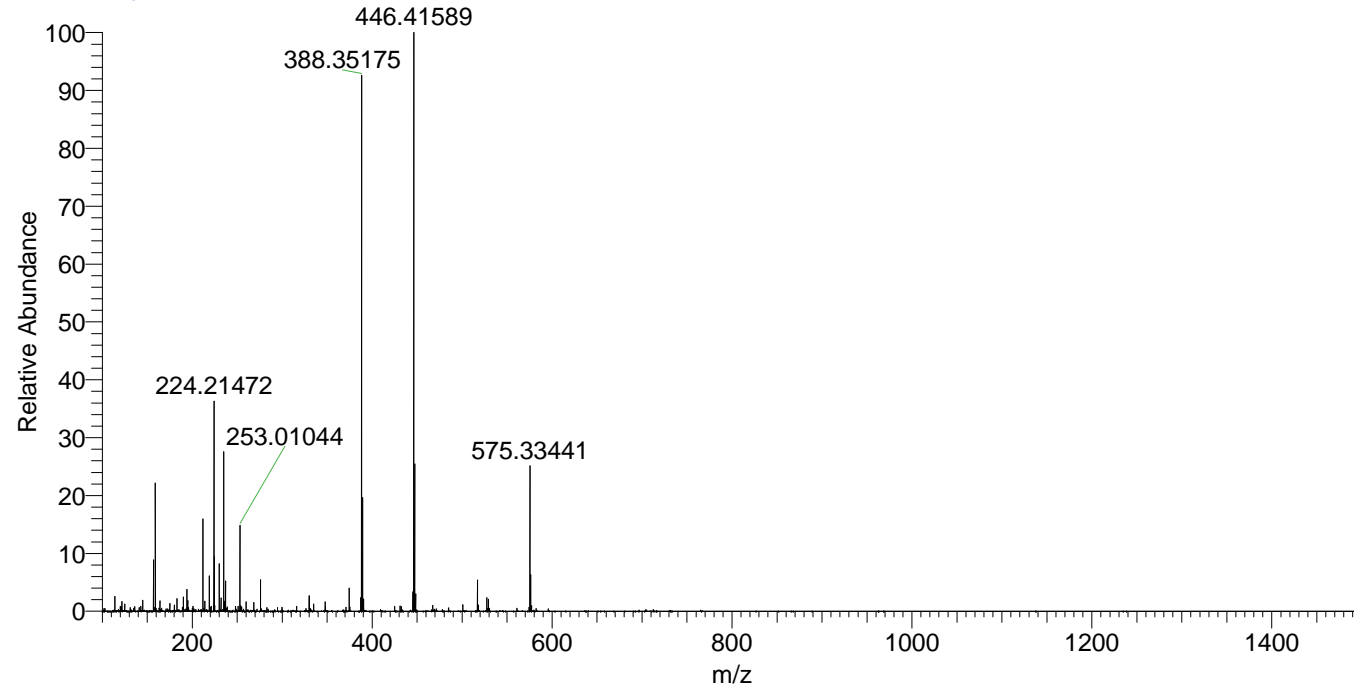
NL: 3.19E7
 Base Peak m/z=
 446.41466-446.41912 F:
 FTMS + p ESI Full ms
 [100.00-1500.00] MS
 Hcurta_HDX

NL: 1.01E7
 Base Peak m/z=
 224.21438-224.21662 F:
 FTMS + p ESI Full ms
 [100.00-1500.00] MS
 Hcurta_HDX

Hcurta_HDX#345 RT: 2.26
 T: FTMS + p ESI Full ms [100.00-1500.00]
 m/z = 446.00000-447.00000

m/z	Intensity	Relative	Delta (ppm)	Composition
446.41586	31887046.0	100.00	-1.07	C ₂₃ H ₃₆ ² H ₉ O ₂ N ₆
			2.40	C ₂₃ H ₃₄ ² H ₁₀ O ₂ N ₆
			-4.54	C ₂₃ H ₃₈ ² H ₈ O ₂ N ₆

Hcurta_HDX #344 RT: 2.26 AV: 1 NL: 2.70E7
 T: FTMS + p ESI Full ms [100.00-1500.00]



Hcurta_HDX #345 RT: 2.26 AV: 1 NL: 3.15E7
 T: FTMS + p ESI Full ms [100.00-1500.00]

