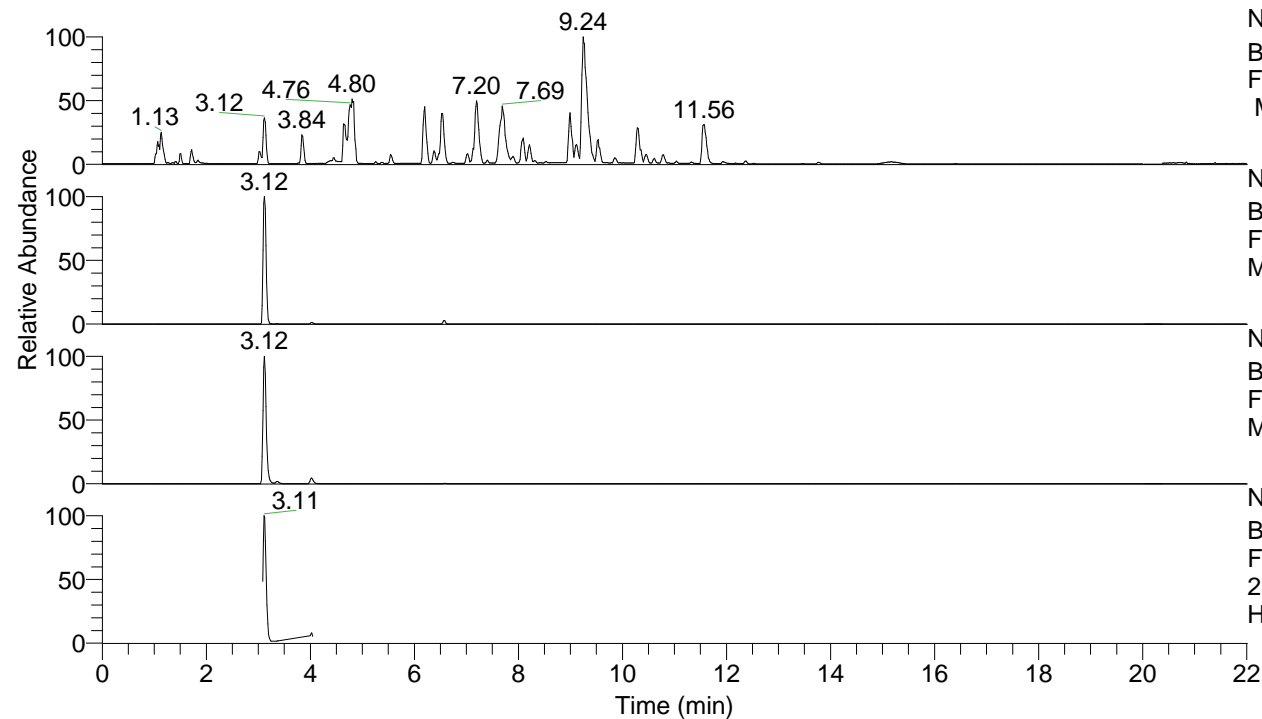


RT: 0.00 - 22.01



NL: 8.52E7
 Base Peak m/z= 100.00000-1500.00000
 F: FTMS + p ESI Full ms [100.00-1500.00]
 MS Hcurta

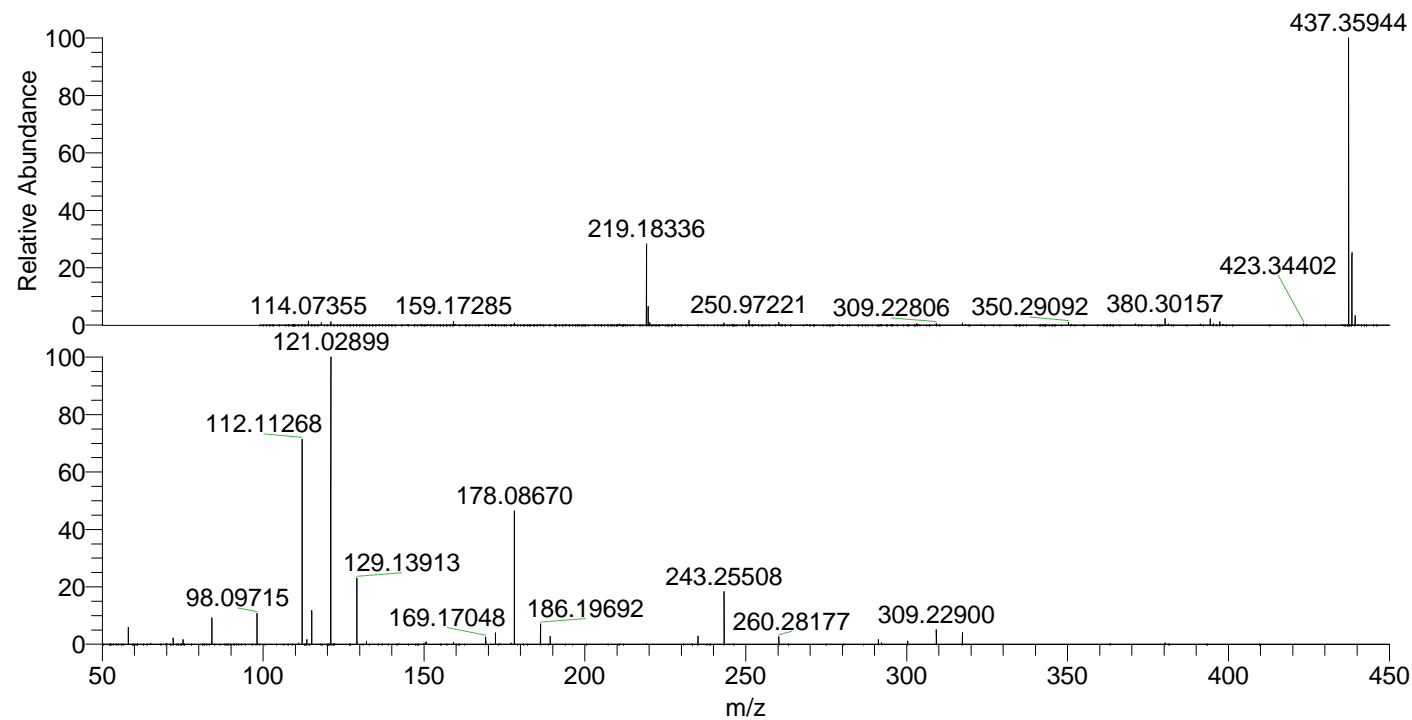
NL: 3.11E7
 Base Peak m/z= 437.35603-437.36477 F:
 FTMS + p ESI Full ms [100.00-1500.00]
 MS Hcurta

NL: 8.76E6
 Base Peak m/z= 219.18192-219.18630 F:
 FTMS + p ESI Full ms [100.00-1500.00]
 MS Hcurta

NL: 1.79E6
 Base Peak m/z= 50.00000-1500.00000 F:
 FTMS + p ESI d Full ms2
 219.18@hcd35.00 [50.00-465.00] MS
 Hcurta

Hcurta#1235-1296 RT: 3.08-3.23 AV: 11
 F: FTMS + p ESI d Full ms2 219.18 ...
 m/z= 50.00000-1000.00000

m/z	Intensity	Relative
58.06613	47305.4	5.94
72.08161	16790.0	2.11
75.09249	12414.3	1.56
84.08158	74597.9	9.37
98.09715	84769.9	10.65
112.11268	569331.9	71.50
113.61825	12657.6	1.59
115.12355	93283.0	11.71
121.02899	796275.4	100.00
129.13913	182397.7	22.91
132.14991	8720.2	1.10
150.66013	7153.0	0.90
159.17362	5334.8	0.67
169.17048	19878.9	2.50
172.18126	31532.6	3.96
178.08670	379281.4	47.63
186.19692	57282.3	7.19
189.20808	22189.7	2.79
235.14443	22548.6	2.83
243.25508	148306.0	18.62
260.28177	21111.9	2.65
291.21833	13034.7	1.64
292.20211	4015.5	0.50
300.31220	8397.0	1.05
309.22900	40723.5	5.11
317.33975	33262.7	4.18



NL: 3.09E7
 Hcurta#1249 RT: 3.12
 AV: 1 T: FTMS + p ESI
 Full lock ms
 [100.00-1500.00]

NL: 7.92E5
 Hcurta#1196-1297 RT:
 3.08-3.23 AV: 11 F:
 FTMS + p ESI d Full ms2
 219.18@hcd35.00
 [50.00-465.00]