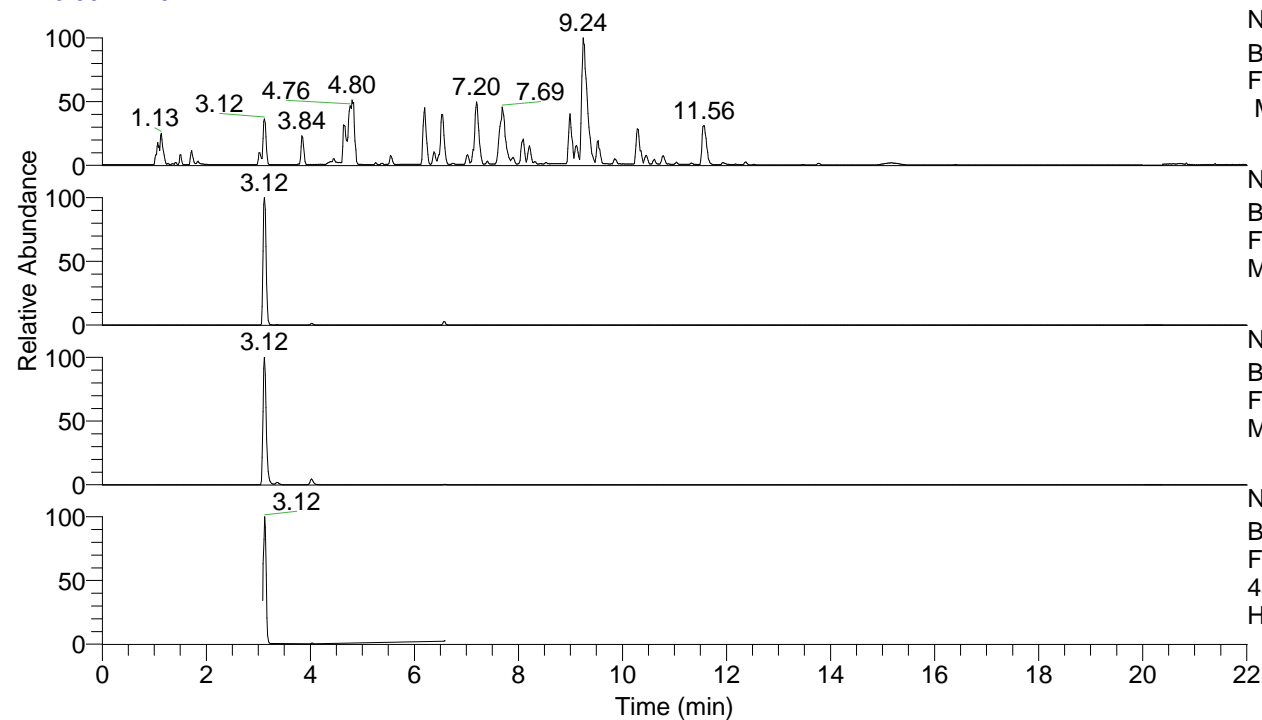


RT: 0.00 - 22.01



NL: 8.52E7  
 Base Peak m/z= 100.00000-1500.00000  
 F: FTMS + p ESI Full ms [100.00-1500.00]  
 MS Hcurta

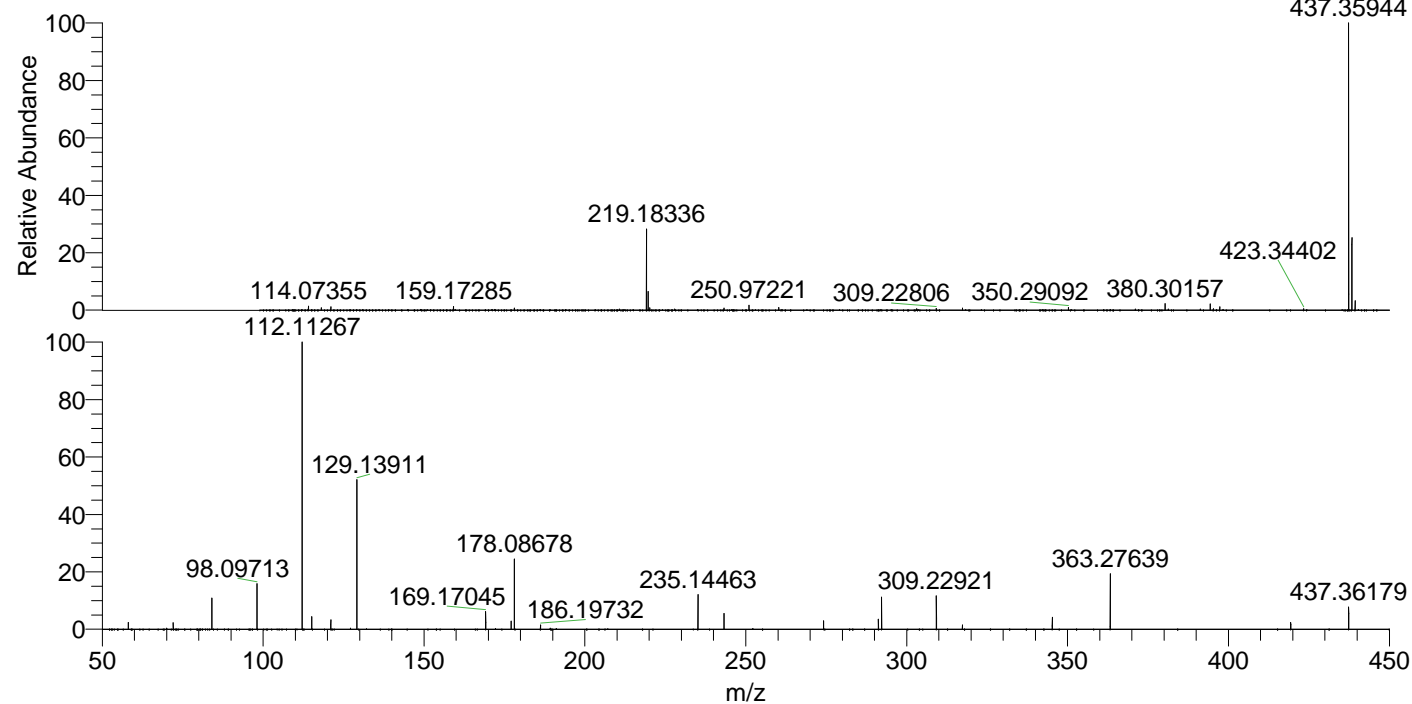
NL: 3.11E7  
 Base Peak m/z= 437.35603-437.36477 F:  
 FTMS + p ESI Full ms [100.00-1500.00]  
 MS Hcurta

NL: 8.76E6  
 Base Peak m/z= 219.18192-219.18630 F:  
 FTMS + p ESI Full ms [100.00-1500.00]  
 MS Hcurta

NL: 6.71E6  
 Base Peak m/z= 50.00000-1500.00000 F:  
 FTMS + p ESI d Full ms2  
 437.36@hcd35.00 [50.00-465.00] MS  
 Hcurta

Hcurta#1234-1293 RT: 3.08-3.23 AV: 11  
 F: FTMS + p ESI d Full ms2 437.36@h ...  
 m/z= 50.00000-1000.00000

m/z	Intensity	Relative
58.06612	64339.4	2.39
72.08164	61063.9	2.26
84.08157	298492.7	11.07
98.09713	423957.2	15.72
112.11267	2696940.0	100.00
115.12353	118689.1	4.40
121.02893	87446.2	3.24
129.13911	1389364.8	51.52
169.17045	165403.4	6.13
177.10260	76656.2	2.84
178.08678	669451.5	24.82
186.19732	39822.6	1.48
235.14463	333526.2	12.37
243.25504	148552.2	5.51
274.19214	78087.0	2.90
291.21897	93384.8	3.46
292.20263	300088.0	11.13
309.22921	321385.5	11.92
317.34008	40923.7	1.52
345.26607	115008.0	4.26
363.27639	514796.9	19.09
419.35022	66259.9	2.46
437.36179	209054.8	7.75



NL: 3.09E7  
 Hcurta#1249 RT: 3.12  
 AV: 1 T: FTMS + p ESI  
 Full lock ms  
 [100.00-1500.00]

NL: 2.67E6  
 Hcurta#1207-1297 RT:  
 3.08-3.23 AV: 11 F:  
 FTMS + p ESI d Full ms2  
 437.36@hcd35.00  
 [50.00-465.00]