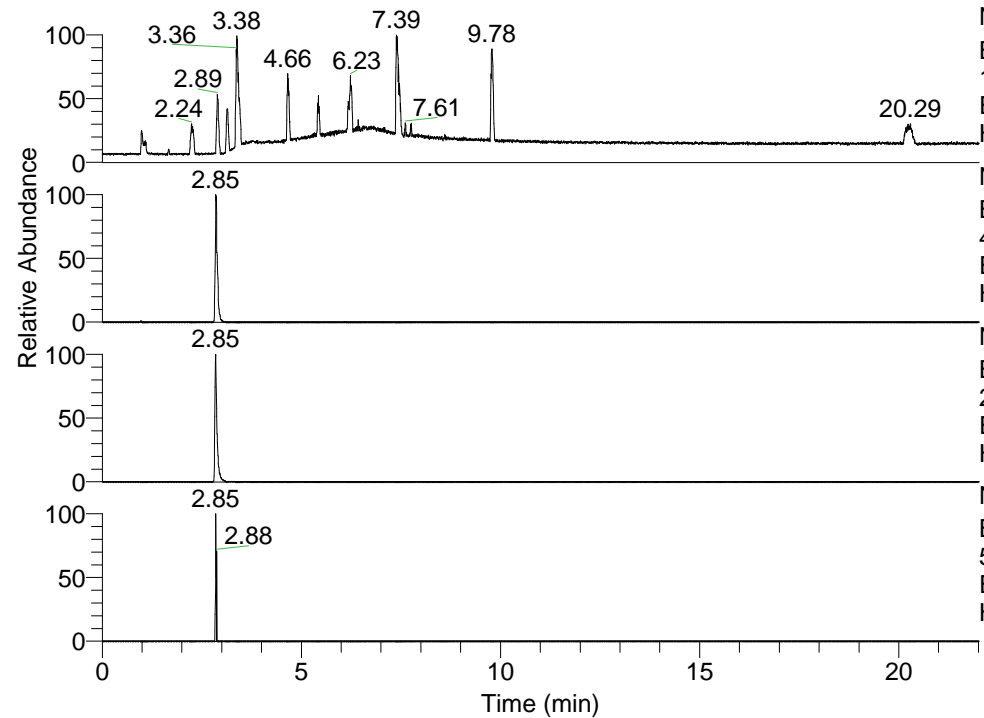


RT: 0.00 - 22.01



NL: 1.13E8
Base Peak m/z=
100.00000-1500.00000 F: FTMS + p
ESI Full ms [100.00-1500.00] MS
Hcurta_HDX

NL: 6.54E5
Base Peak m/z=
441.39433-441.39875 F: FTMS + p
ESI Full ms [100.00-1500.00] MS
Hcurta_HDX

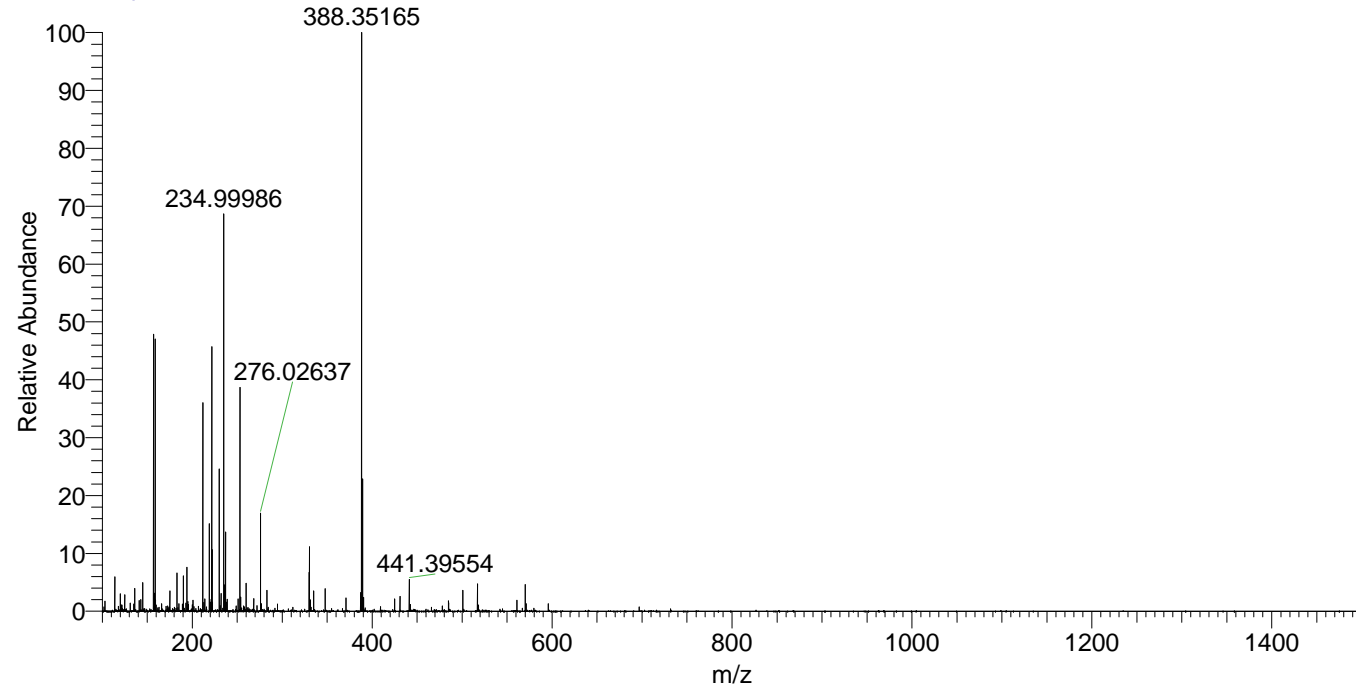
NL: 5.52E6
Base Peak m/z=
221.70421-221.70643 F: FTMS + p
ESI Full ms [100.00-1500.00] MS
Hcurta_HDX

NL: 1.07E4
Base Peak m/z=
556.39290-556.39846 F: FTMS + p
ESI Full ms [100.00-1500.00] MS
Hcurta_HDX

Hcurta_HDX#436 RT: 2.85
T: FTMS + p ESI Full ms [100.00-1500.00]
m/z= 441.00000-442.00000

m/z	Intensity	Relative	Delta (ppm)	Composition
441.39554	653791.9	100.00	-1.01	C ₂₄ H ₄₁ ² H ₅ O ₂ N ₅
			2.49	C ₂₄ H ₃₉ ² H ₆ O ₂ N ₅
			-4.52	C ₂₄ H ₄₃ ² H ₄ O ₂ N ₅

Hcurta_HDX #436 RT: 2.85 AV: 1 NL: 1.19E7
T: FTMS + p ESI Full ms [100.00-1500.00]



Hcurta_HDX #436 RT: 2.85 AV: 1 NL: 6.52E5
T: FTMS + p ESI Full ms [100.00-1500.00]

