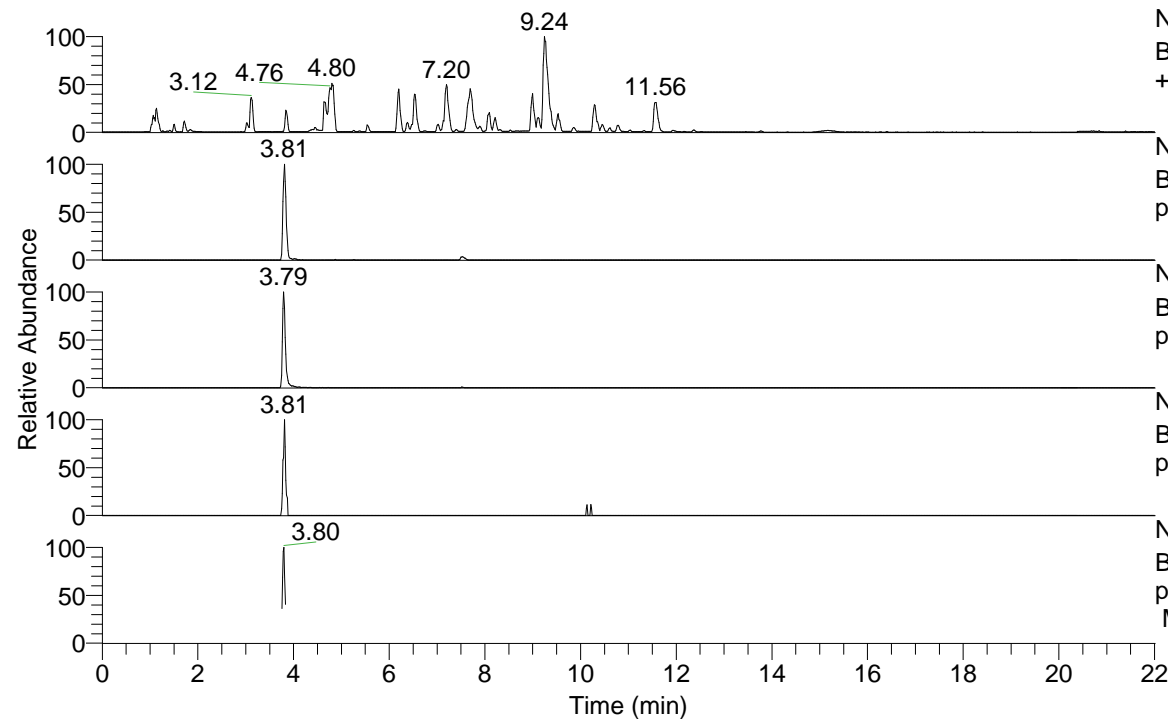


RT: 0.00 - 22.01



NL: 8.52E7
 Base Peak m/z= 100.00000-1500.00000 F: FTMS + p ESI Full ms [100.00-1500.00] MS Hcurta

NL: 7.13E5
 Base Peak m/z= 436.36079-436.36951 F: FTMS + p ESI Full ms [100.00-1500.00] MS Hcurta

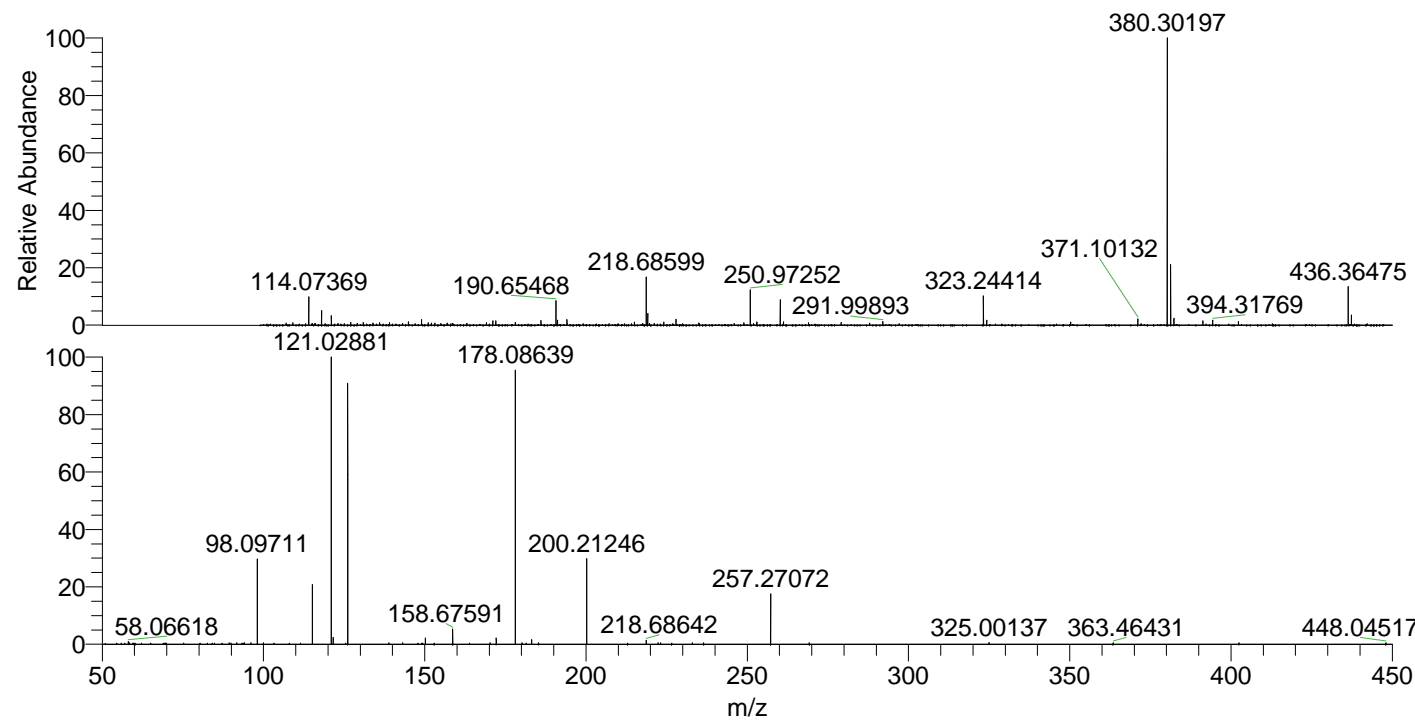
NL: 1.03E6
 Base Peak m/z= 218.68430-218.68868 F: FTMS + p ESI Full ms [100.00-1500.00] MS Hcurta

NL: 1.65E4
 Base Peak m/z= 550.35251-550.36351 F: FTMS + p ESI Full ms [100.00-1500.00] MS Hcurta

NL: 1.66E5
 Base Peak m/z= 50.00000-1500.00000 F: FTMS + p ESI d Full ms2 218.69@hcd35.00 [50.00-465.00] MS Hcurta

Hcurta#1516-1533 RT: 3.79-3.83 AV: 4
 F: FTMS + p ESI d Full ms2 218.69 ...
 m/z= 50.00000-1000.00000

| m/z | Intensity | Relative |
|-----------|-----------|----------|
| 58.06618 | 1479.7 | 1.25 |
| 58.46890 | 688.6 | 0.58 |
| 59.77349 | 656.4 | 0.56 |
| 62.15454 | 617.0 | 0.52 |
| 65.07158 | 665.5 | 0.56 |
| 69.39624 | 603.5 | 0.51 |
| 69.91369 | 631.8 | 0.54 |
| 82.63038 | 644.0 | 0.55 |
| 84.09856 | 676.4 | 0.57 |
| 89.35278 | 718.8 | 0.61 |
| 91.75230 | 702.8 | 0.60 |
| 96.14790 | 814.1 | 0.69 |
| 98.09708 | 32852.4 | 27.85 |
| 100.00259 | 704.2 | 0.60 |
| 115.12344 | 25264.3 | 21.42 |
| 121.02056 | 1089.0 | 0.92 |
| 121.02880 | 117942.3 | 100.00 |
| 121.63335 | 3675.0 | 3.12 |
| 126.12807 | 107941.4 | 91.52 |
| 138.87817 | 776.9 | 0.66 |
| 143.15442 | 847.1 | 0.72 |
| 147.95186 | 660.8 | 0.56 |
| 150.16246 | 3387.4 | 2.87 |
| 152.93494 | 664.6 | 0.56 |
| 158.67595 | 7157.9 | 6.07 |
| 170.27812 | 756.0 | 0.64 |
| 172.18153 | 3276.1 | 2.78 |
| 178.08639 | 109447.1 | 92.80 |
| 181.49622 | 682.9 | 0.58 |
| 183.18545 | 2474.0 | 2.10 |
| 185.28899 | 846.1 | 0.72 |
| 200.21252 | 34781.6 | 29.49 |
| 218.68642 | 2257.6 | 1.91 |
| 222.37748 | 807.5 | 0.68 |
| 223.17543 | 726.1 | 0.62 |
| 236.49414 | 711.7 | 0.60 |
| 257.27063 | 21488.1 | 18.22 |
| 269.24215 | 733.3 | 0.62 |
| 325.00137 | 971.2 | 0.82 |
| 402.46926 | 702.2 | 0.60 |



NL: 5.10E6
 Hcurta#1525 RT: 3.81
 AV: 1 T: FTMS + p ESI
 Full lock ms
 [100.00-1500.00]

NL: 1.02E5
 Hcurta#1432-1586 RT:
 3.76-3.83 AV: 6 F: FTMS
 + p ESI d Full ms2
 218.69@hcd35.00
 [50.00-465.00]