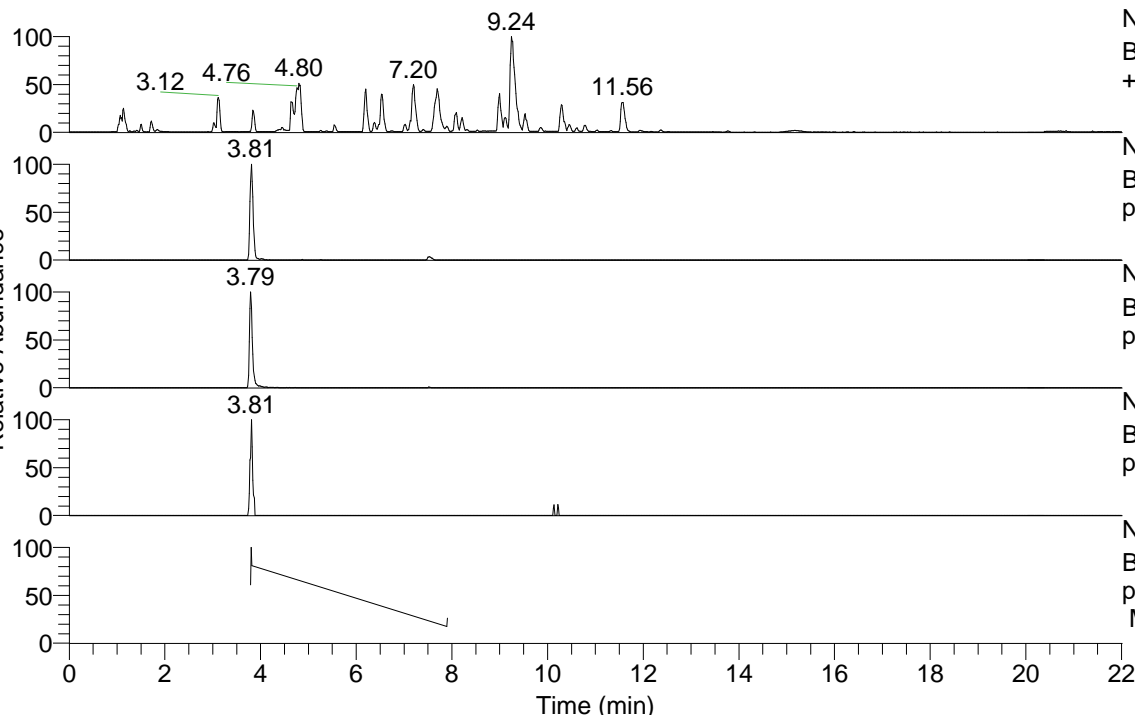


RT: 0.00 - 22.01



NL: 8.52E7
 Base Peak m/z= 100.00000-1500.00000 F: FTMS + p ESI Full ms [100.00-1500.00] MS Hcurta

NL: 7.13E5
 Base Peak m/z= 436.36079-436.36951 F: FTMS + p ESI Full ms [100.00-1500.00] MS Hcurta

NL: 1.03E6
 Base Peak m/z= 218.68430-218.68868 F: FTMS + p ESI Full ms [100.00-1500.00] MS Hcurta

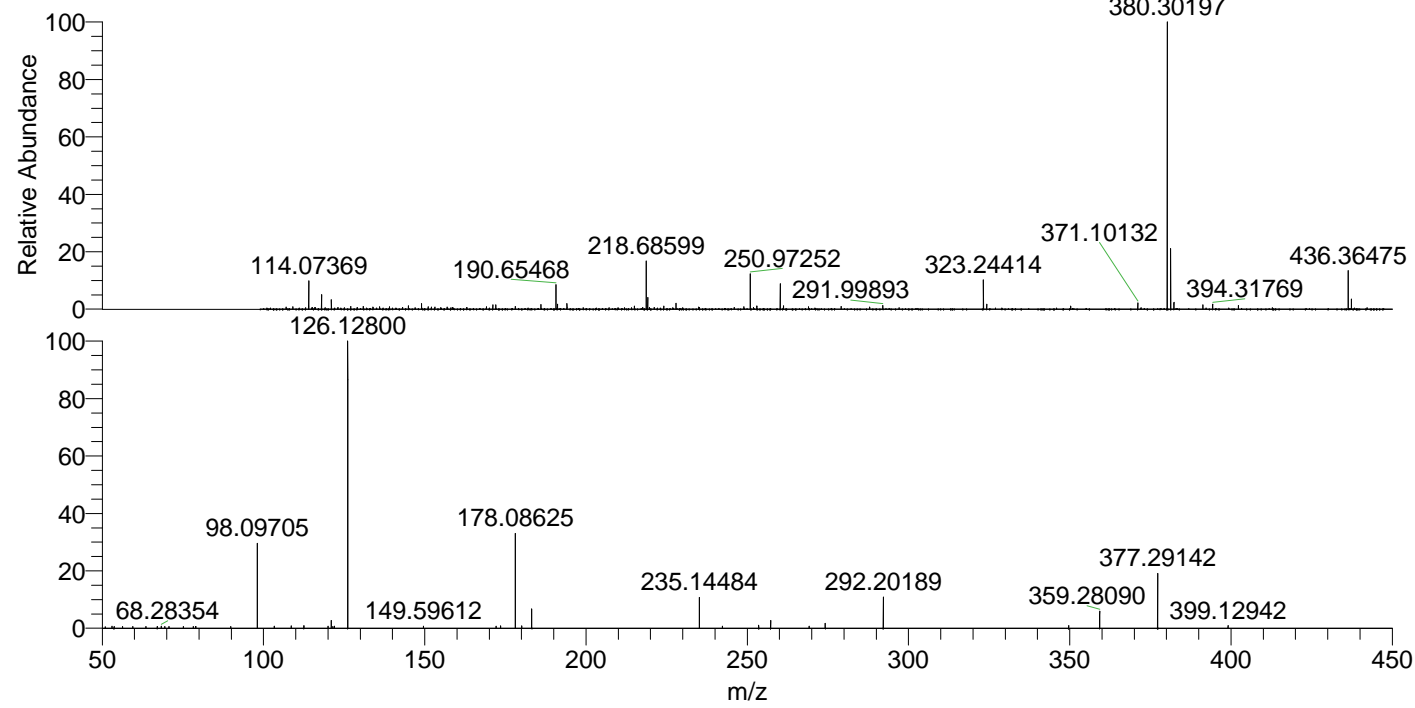
NL: 1.65E4
 Base Peak m/z= 550.35251-550.36351 F: FTMS + p ESI Full ms [100.00-1500.00] MS Hcurta

NL: 2.27E5
 Base Peak m/z= 50.00000-1500.00000 F: FTMS + p ESI d Full ms2 436.29@hcd35.00 [50.00-465.00] MS Hcurta

Hcurta#1518-1528 RT: 3.79-3.82 AV: 3

F: FTMS + p ESI d Full ms2 436.29 ...

m/z	Intensity	Relative
50.96950	965.8	0.56
53.03194	1181.6	0.68
53.67353	1018.9	0.59
56.33671	1102.0	0.64
59.51237	1049.6	0.61
63.59085	1139.9	0.66
67.07242	1106.0	0.64
68.28354	1250.4	0.72
69.41923	1134.7	0.66
70.66540	1091.4	0.63
75.14620	1099.3	0.64
78.25453	1097.8	0.63
78.90131	1067.2	0.62
79.01315	1126.3	0.65
89.86583	1159.5	0.67
98.09705	52201.7	30.18
103.39168	1279.2	0.74
108.56846	1439.9	0.83
112.53121	1432.3	0.83
120.03241	1208.8	0.70
121.02892	4886.9	2.83
121.54196	1167.7	0.68
122.03774	1218.2	0.70
126.12800	172964.1	100.00
149.59612	1205.4	0.70
172.14997	1274.4	0.74
173.53435	1377.3	0.80
178.08625	57026.4	32.97
180.05277	1403.9	0.81
183.18607	12067.6	6.98
235.14484	18606.2	10.76
242.31880	1373.5	0.79
253.56136	1773.5	1.03
257.26920	4957.0	2.87
269.21250	1266.3	0.73
274.19087	2880.7	1.67
292.20189	19199.2	11.10
349.67822	1555.2	0.90
359.28090	10247.7	5.92
377.29142	33205.0	19.20
399.12942	1688.7	0.98



NL: 5.10E6
 Hcurta#1525 RT: 3.81
 AV: 1 T: FTMS + p ESI
 Full lock ms
 [100.00-1500.00]

NL: 1.72E5
 Hcurta#1465-1586 RT:
 3.79-3.82 AV: 3 F: FTMS
 + p ESI d Full ms2
 436.29@hcd35.00
 [50.00-465.00]