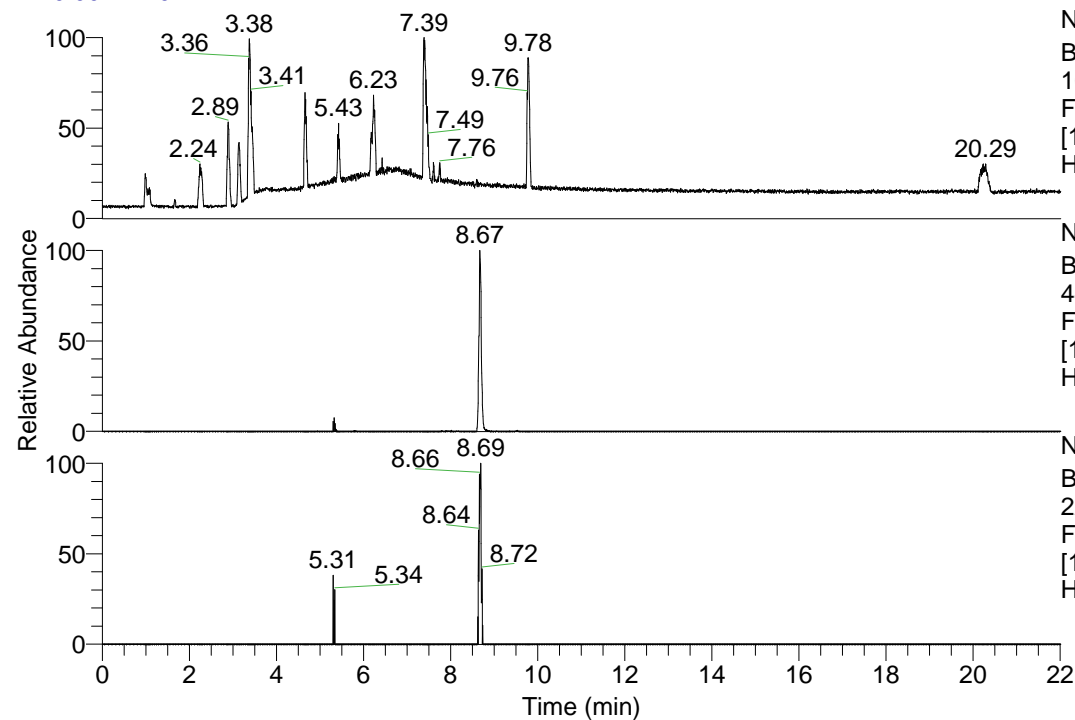


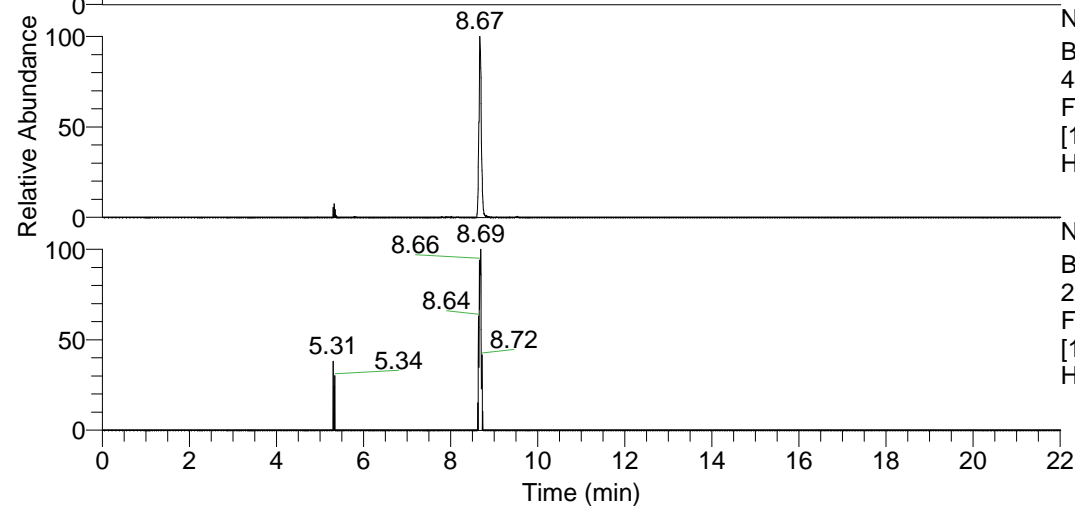
RT: 0.00 - 22.01



NL: 1.13E8
 Base Peak m/z=
 100.00000-1500.00000 F:
 FTMS + p ESI Full ms
 [100.00-1500.00] MS
 Hcurta_HDX

Hcurta_HDX#1404 RT: 8.67
 T: FTMS + p ESI Full ms [100.00-1500.00]
 m/z= 443.00000-444.00000

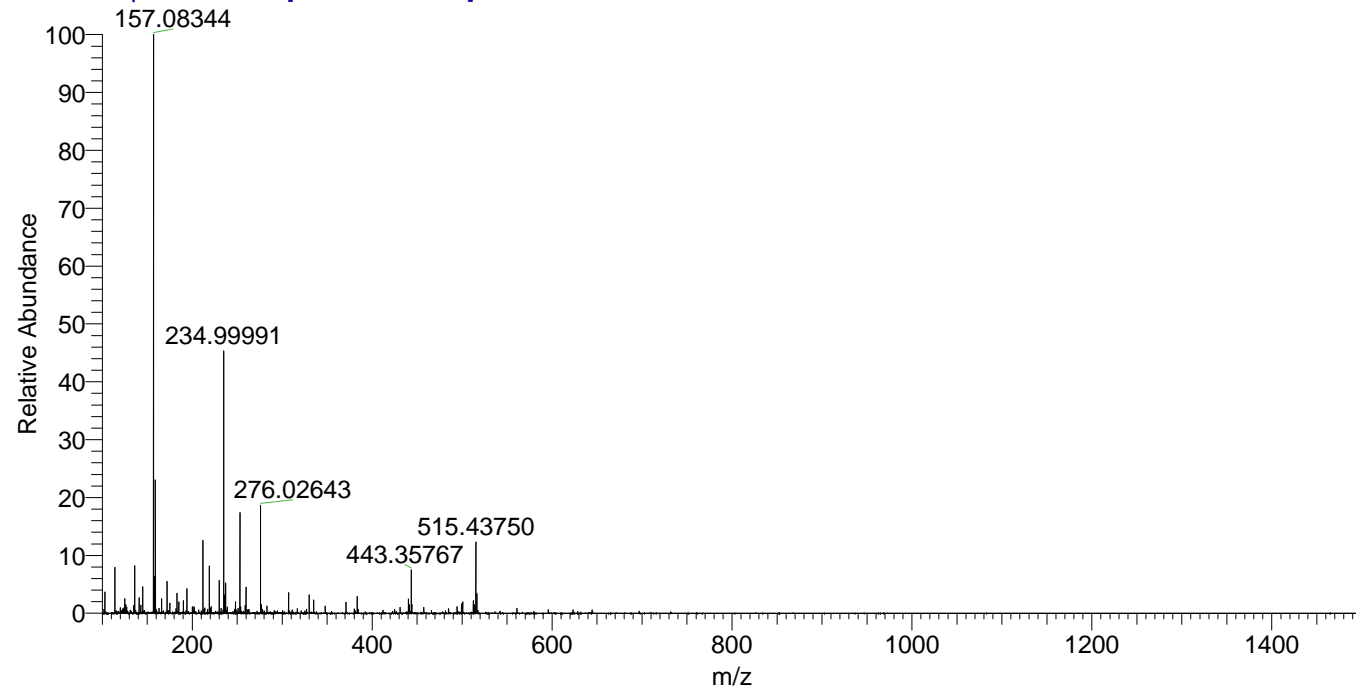
m/z	Intensity	Relative	Delta (ppm)	Composition
443.35767	1564403.0	100.00	-0.82	C ₂₂ H ₃₁ ² H ₈ O ₃ N ₆
			2.67	C ₂₂ H ₂₉ ² H ₉ O ₃ N ₆
			-4.31	C ₂₂ H ₃₃ ² H ₇ O ₃ N ₆



NL: 1.79E6
 Base Peak m/z=
 443.35636-443.36080 F:
 FTMS + p ESI Full ms
 [100.00-1500.00] MS
 Hcurta_HDX

NL: 5.11E4
 Base Peak m/z=
 222.68523-222.68745 F:
 FTMS + p ESI Full ms
 [100.00-1500.00] MS
 Hcurta_HDX

Hcurta_HDX #1404 RT: 8.67 AV: 1 NL: 2.09E7
 T: FTMS + p ESI Full ms [100.00-1500.00]



Hcurta_HDX #1404 RT: 8.67 AV: 1 NL: 1.56E6
 T: FTMS + p ESI Full ms [100.00-1500.00]

