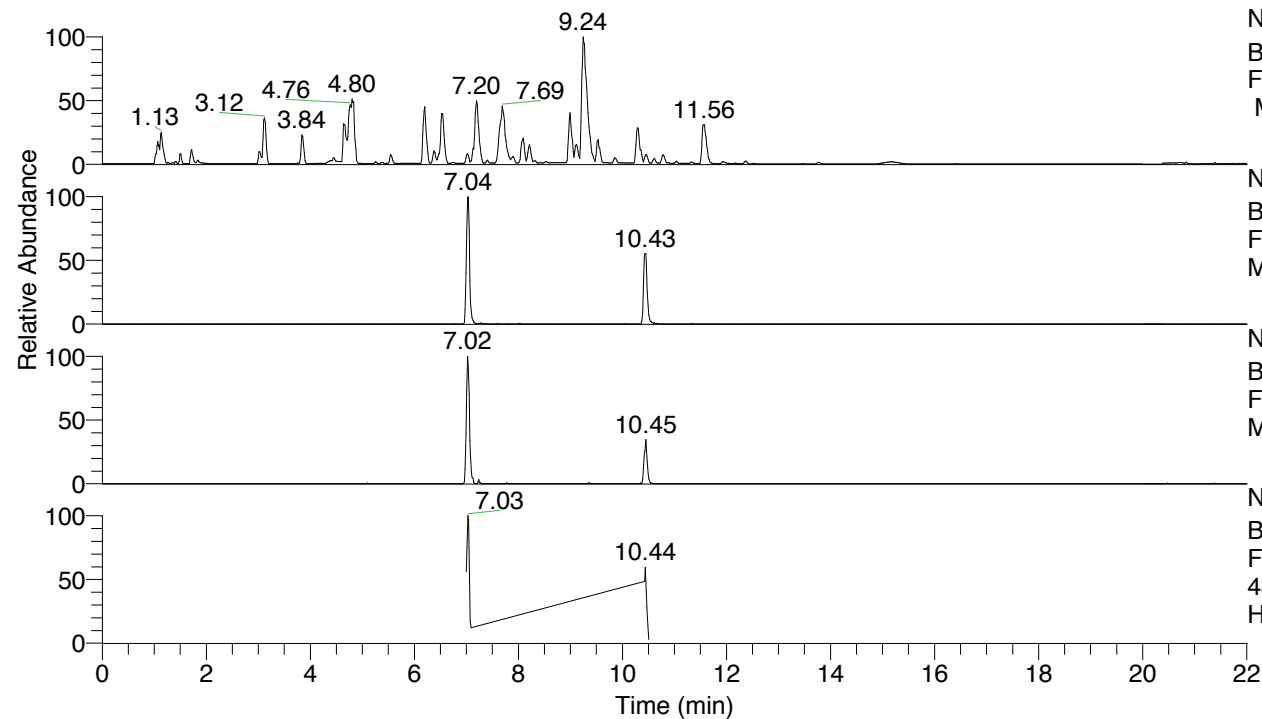


RT: 0.00 - 22.01



NL: 8.52E7  
 Base Peak m/z= 100.00000-1500.00000  
 F: FTMS + p ESI Full ms [100.00-1500.00]  
 MS Hcurta

NL: 1.84E6  
 Base Peak m/z= 435.30401-435.31271 F:  
 FTMS + p ESI Full ms [100.00-1500.00]  
 MS Hcurta

NL: 2.37E5  
 Base Peak m/z= 218.15591-218.16027 F:  
 FTMS + p ESI Full ms [100.00-1500.00]  
 MS Hcurta

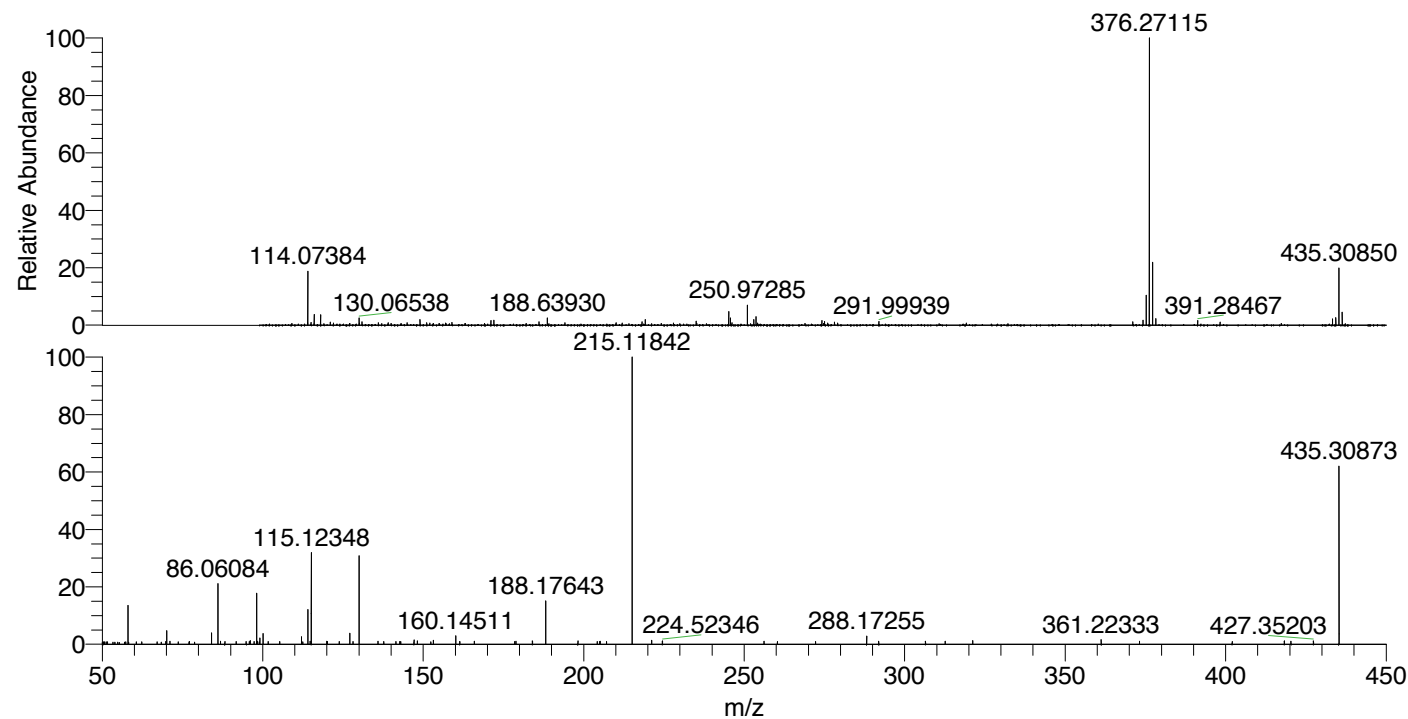
NL: 2.24E5  
 Base Peak m/z= 50.00000-1500.00000 F:  
 FTMS + p ESI d Full ms2  
 435.31@hcd35.00 [50.00-460.00] MS  
 Hcurta

Hcurta#4187-4218 RT: 10.43-10.51 AV: 6

F: FTMS + p ESI d Full ms2 435.31 ...

m/z= 50.00000-1000.00000

m/z	Intensity	Relative
58.06600	9423.2	13.61
70.06595	3284.4	4.74
71.09097	691.5	1.00
84.08162	2678.4	3.87
86.06084	14359.3	20.73
86.85226	704.9	1.02
88.24749	674.9	0.97
91.76026	678.7	0.98
96.08160	896.7	1.29
98.09710	12104.4	17.48
98.33796	741.3	1.07
99.09257	1505.5	2.17
100.07609	2570.9	3.71
112.07625	1764.6	2.55
114.09201	8248.8	11.91
114.73352	699.3	1.01
115.12348	22023.9	31.80
119.92123	701.3	1.01
120.18775	674.2	0.97
127.12361	2604.5	3.76
130.06559	20881.6	30.15
135.94525	684.2	0.99
142.71714	656.6	0.95
143.02345	669.5	0.97
147.13699	1005.7	1.45
148.14588	857.1	1.24
153.13832	968.7	1.40
160.14511	1997.9	2.88
161.39252	676.3	0.98
165.91812	742.1	1.07
178.52561	653.0	0.94
178.86860	716.8	1.03
184.03087	770.2	1.11
188.17643	10555.9	15.24
198.20849	766.6	1.11
204.25688	666.4	0.96
205.08709	737.1	1.06
215.11842	69260.7	100.00
221.19853	995.5	1.44
224.52346	811.2	1.17
256.21215	720.3	1.04
260.34511	657.2	0.95
272.24167	673.8	0.97
288.17255	1972.7	2.85
291.92070	708.0	1.02
306.48369	709.2	1.02
312.63130	721.1	1.04
321.19325	883.6	1.28
361.22333	1128.0	1.63
373.15962	751.3	1.08
402.04857	667.1	0.96
418.28548	790.3	1.14
420.33897	760.5	1.10
427.35203	817.0	1.18
435.30873	42601.6	61.51



NL: 5.01E6  
 Hcurta#4189 RT: 10.43  
 AV: 1 T: FTMS + p ESI  
 Full lock ms  
 [100.00-1500.00]

NL: 6.78E4  
 Hcurta#4146-4234 RT:  
 10.43-10.51 AV: 6 F:  
 FTMS + p ESI d Full ms2  
 435.31@hcd35.00  
 [50.00-460.00]

Hcurta#4187-4218 RT: 10.43-10.51 AV: 6

F: FTMS + p ESI d Full ms2 435.31@hcd35.00 [50.00-460.00]

m/z= 50.00000-1000.00000

m/z	Intensity	Relative
50.08060	481.8	0.70
50.29957	466.0	0.67
50.46056	593.2	0.86
50.72363	553.7	0.80
51.22136	551.1	0.80
51.61003	479.9	0.69
51.68835	578.6	0.84
53.38573	486.8	0.70
53.92092	478.3	0.69
54.83551	503.7	0.73
55.36781	452.4	0.65
56.89328	485.3	0.70
57.32172	579.7	0.84
58.06600	9423.2	13.61
58.25540	529.5	0.76
60.58640	590.0	0.85
62.35782	551.6	0.80
67.09004	591.0	0.85
68.43350	534.2	0.77
69.83439	627.0	0.91
70.06595	3284.4	4.74
71.09097	691.5	1.00
73.68247	587.0	0.85
77.06440	558.7	0.81
77.14620	646.0	0.93
78.78845	505.5	0.73
84.08162	2678.4	3.87
86.06084	14359.3	20.73
86.85226	704.9	1.02
88.19716	575.7	0.83
88.24749	674.9	0.97
91.76026	678.7	0.98
94.87241	631.6	0.91
95.82135	629.4	0.91
96.08160	896.7	1.29
97.29817	618.5	0.89
98.09710	12104.4	17.48
98.33796	741.3	1.07
98.95132	596.5	0.86

Hcurta#4187-4218 RT: 10.43-10.51 AV: 6

F: FTMS + p ESI d Full ms2 435.31@hcd35.00 [50.00-460.00]

m/z= 50.00000-1000.00000

m/z	Intensity	Relative
99.09257	1505.5	2.17
100.07609	2570.9	3.71
101.74785	642.6	0.93
105.32928	639.6	0.92
112.07625	1764.6	2.55
112.48240	541.6	0.78
114.09201	8248.8	11.91
114.73352	699.3	1.01
115.12348	22023.9	31.80
119.92123	701.3	1.01
120.18775	674.2	0.97
123.86150	648.2	0.94
127.12361	2604.5	3.76
128.15616	635.3	0.92
130.06559	20881.6	30.15
135.94525	684.2	0.99
137.74944	622.7	0.90
141.49900	634.9	0.92
142.71714	656.6	0.95
143.02345	669.5	0.97
147.13699	1005.7	1.45
148.14588	857.1	1.24
152.33880	589.4	0.85
153.13832	968.7	1.40
160.14511	1997.9	2.88
161.39252	676.3	0.98
165.91812	742.1	1.07
178.52561	653.0	0.94
178.86860	716.8	1.03
184.03087	770.2	1.11
188.17643	10555.9	15.24
198.20849	766.6	1.11
204.25688	666.4	0.96
205.03176	631.8	0.91
205.08709	737.1	1.06
207.13946	648.8	0.94
215.11842	69260.7	100.00
221.19853	995.5	1.44
224.52346	811.2	1.17

Hcurta#4187-4218 RT: 10.43-10.51 AV: 6

F: FTMS + p ESI d Full ms2 435.31@hcd35.00 [50.00-460.00]

m/z= 50.00000-1000.00000

m/z	Intensity	Relative
256.21215	720.3	1.04
260.34511	657.2	0.95
272.24167	673.8	0.97
288.17255	1972.7	2.85
291.92070	708.0	1.02
306.48369	709.2	1.02
312.63130	721.1	1.04
321.19325	883.6	1.28
361.22333	1128.0	1.63
373.15962	751.3	1.08
402.04857	667.1	0.96
418.28548	790.3	1.14
420.33897	760.5	1.10
427.35203	817.0	1.18
435.30873	42601.6	61.51