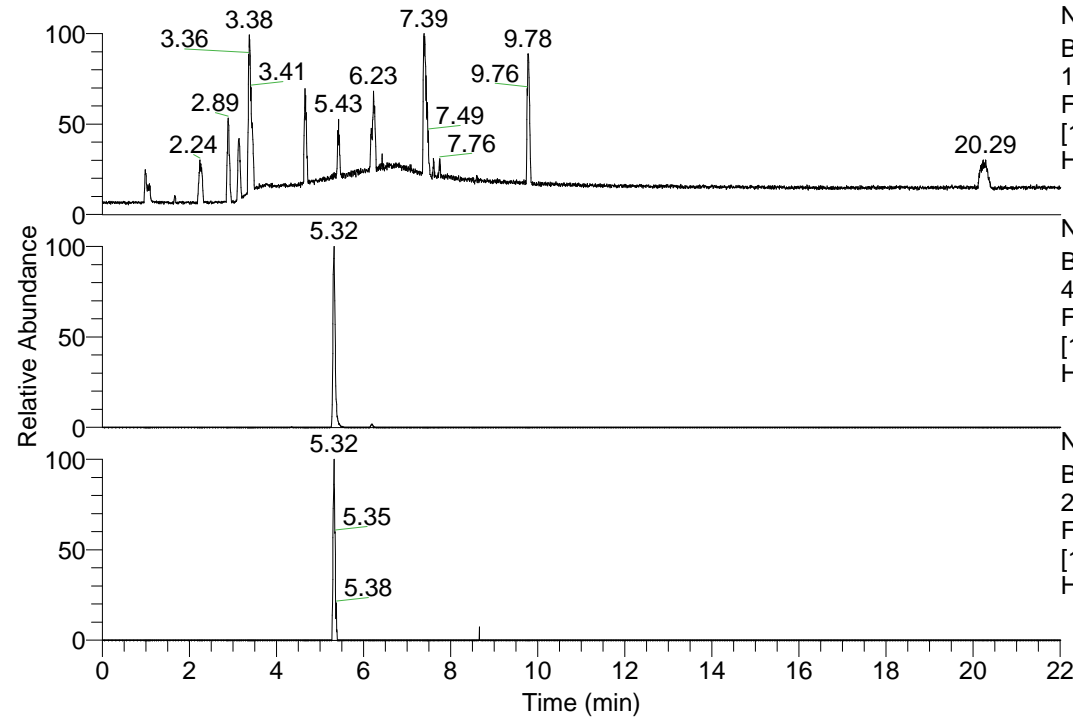


RT: 0.00 - 22.01



NL: 1.13E8  
 Base Peak m/z=  
 100.00000-1500.00000 F:  
 FTMS + p ESI Full ms  
 [100.00-1500.00] MS  
 Hcurta\_HDX

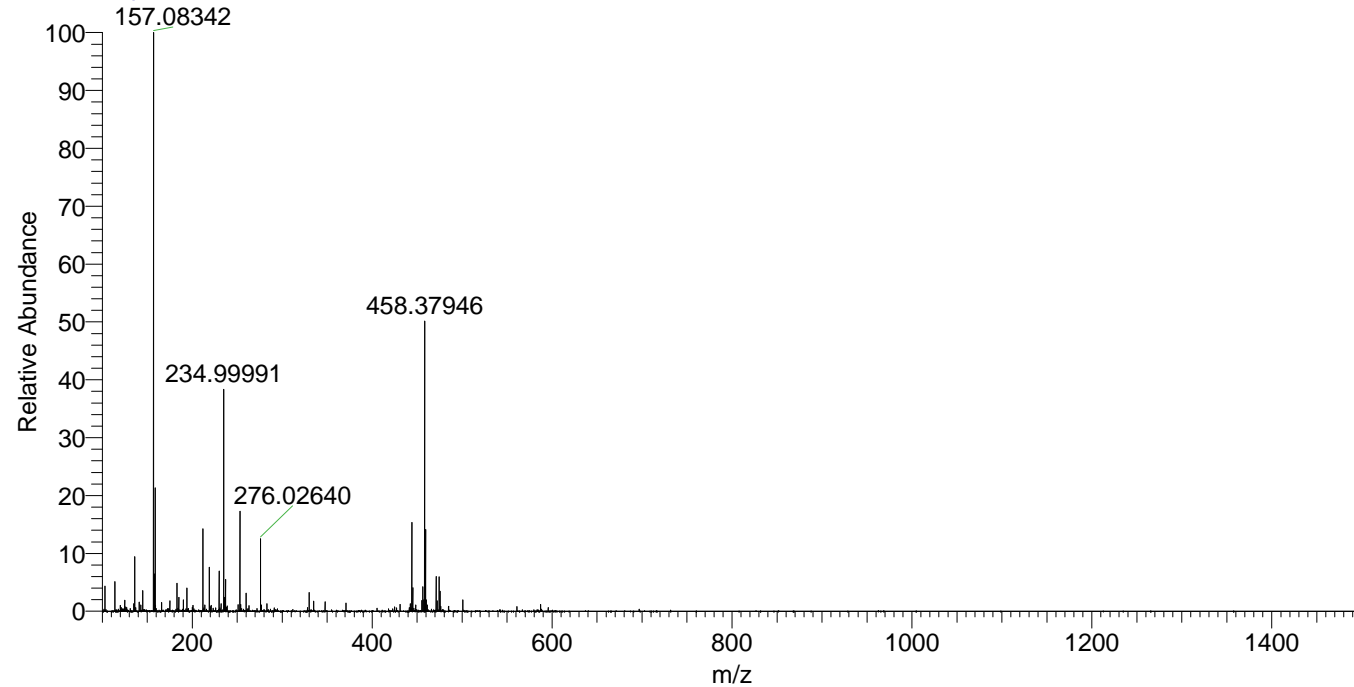
NL: 3.76E6  
 Base Peak m/z=  
 444.36264-444.36708 F:  
 FTMS + p ESI Full ms  
 [100.00-1500.00] MS  
 Hcurta\_HDX

NL: 1.31E5  
 Base Peak m/z=  
 223.18836-223.19060 F:  
 FTMS + p ESI Full ms  
 [100.00-1500.00] MS  
 Hcurta\_HDX

Hcurta\_HDX#841 RT: 5.32  
 T: FTMS + p ESI Full ms [100.00-1500.00]  
 m/z= 444.00000-445.00000

m/z	Intensity	Relative	Delta (ppm)	Composition
444.36398	3513340.3	100.00	-0.73	C <sub>22</sub> H <sub>30</sub> <sup>2</sup> H <sub>9</sub> O <sub>3</sub> N <sub>6</sub>
			2.76	C <sub>22</sub> H <sub>28</sub> <sup>2</sup> H <sub>10</sub> O <sub>3</sub> N <sub>6</sub>
			-4.21	C <sub>22</sub> H <sub>32</sub> <sup>2</sup> H <sub>8</sub> O <sub>3</sub> N <sub>6</sub>

Hcurta\_HDX #841 RT: 5.32 AV: 1 NL: 2.22E7  
 T: FTMS + p ESI Full ms [100.00-1500.00]



Hcurta\_HDX #841 RT: 5.32 AV: 1 NL: 3.41E6  
 T: FTMS + p ESI Full ms [100.00-1500.00]

