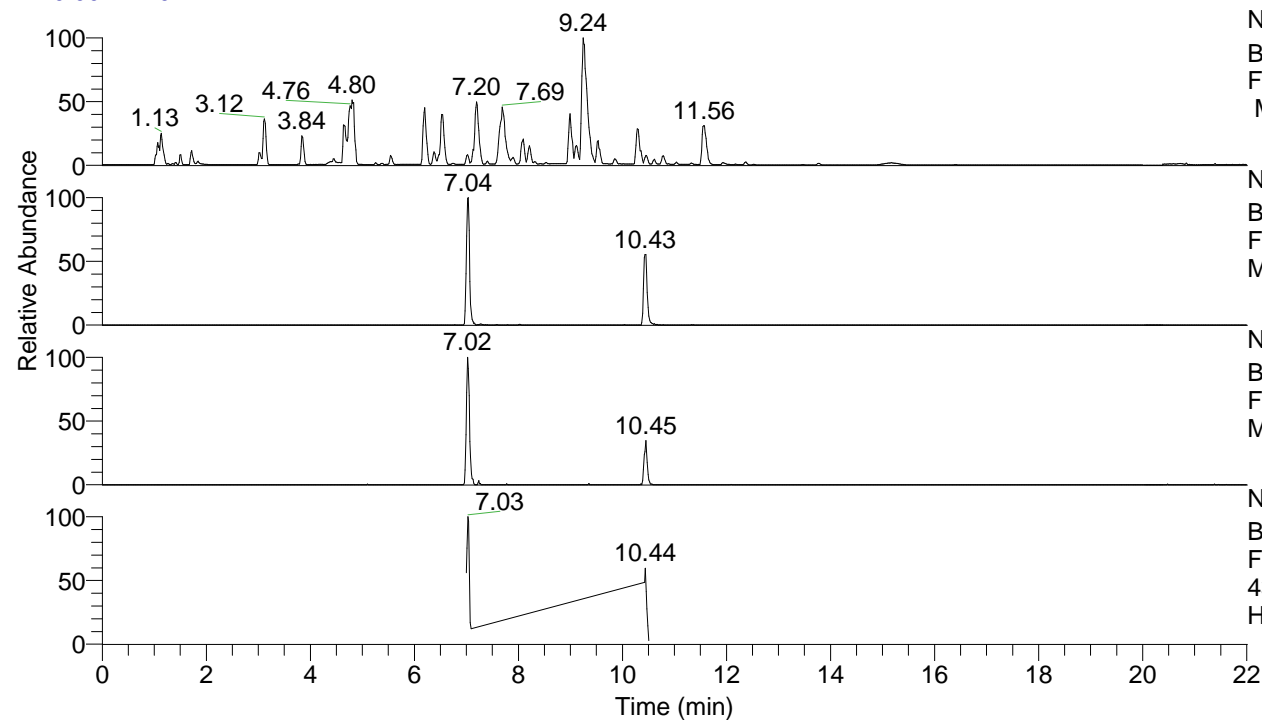


RT: 0.00 - 22.01



NL: 8.52E7
 Base Peak m/z= 100.00000-1500.00000
 F: FTMS + p ESI Full ms [100.00-1500.00]
 MS Hcurta

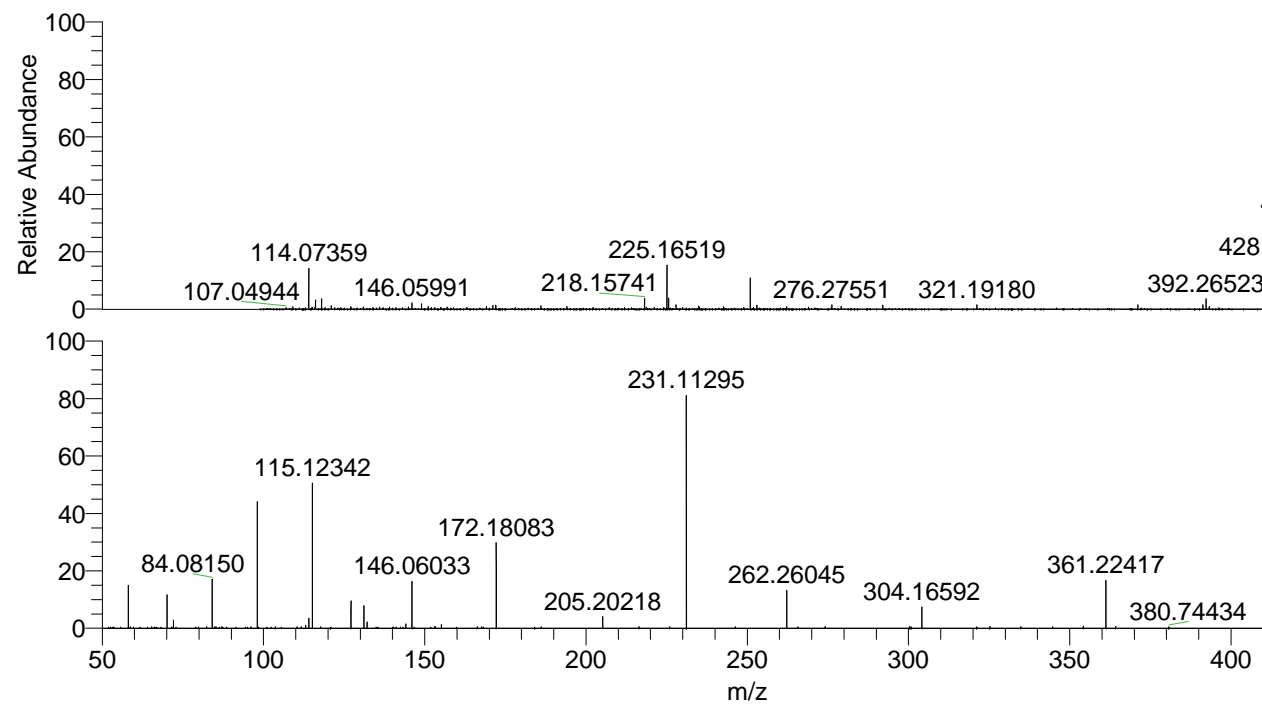
NL: 1.84E6
 Base Peak m/z= 435.30401-435.31271 F:
 FTMS + p ESI Full ms [100.00-1500.00]
 MS Hcurta

NL: 2.37E5
 Base Peak m/z= 218.15591-218.16027 F:
 FTMS + p ESI Full ms [100.00-1500.00]
 MS Hcurta

NL: 2.24E5
 Base Peak m/z= 50.00000-1500.00000 F:
 FTMS + p ESI d Full ms2
 435.31@hcd35.00 [50.00-460.00] MS
 Hcurta

Hcurta#2806-2844 RT: 7.00-7.09 AV: 7
 F: FTMS + p ESI d Full ms2 435.31 ...
 m/z= 50.00000-1000.00000

m/z	Intensity	Relative
58.06604	18950.3	15.20
70.06594	14545.8	11.66
72.08166	3464.2	2.78
82.36559	634.2	0.51
84.08150	21372.5	17.14
87.09262	628.0	0.50
98.09699	55200.6	44.27
103.69658	624.9	0.50
113.10758	1309.8	1.05
114.09171	4423.1	3.55
115.12342	62283.1	49.95
117.75074	681.1	0.55
127.12329	12118.3	9.72
131.11826	9737.3	7.81
132.14969	2719.4	2.18
144.15015	1920.2	1.54
146.06033	20182.0	16.18
153.13895	816.9	0.66
153.29079	647.7	0.52
155.15486	1584.0	1.27
172.16801	663.8	0.53
172.18083	37326.5	29.93
205.20218	5014.5	4.02
225.97382	661.7	0.53
231.11295	99541.7	79.83
262.26045	16584.1	13.30
274.15552	810.0	0.65
300.33639	723.3	0.58
300.80165	635.5	0.51
304.16592	9333.6	7.48
321.19525	677.8	0.54
325.26112	704.1	0.56
344.72505	666.6	0.53
354.22903	853.6	0.68
361.22417	20889.5	16.75
364.24668	688.4	0.55
380.74434	697.3	0.56
435.30826	124699.1	100.00



449.32303 NL: 5.73E6
 Hcurta#2821 RT: 7.04
 AV: 1 T: FTMS + p ESI
 Full lock ms
 [100.00-1500.00]

NL: 1.23E5
 Hcurta#2773-2862 RT:
 7.00-7.09 AV: 7 F: FTMS
 + p ESI d Full ms2
 435.31@hcd35.00
 [50.00-460.00]