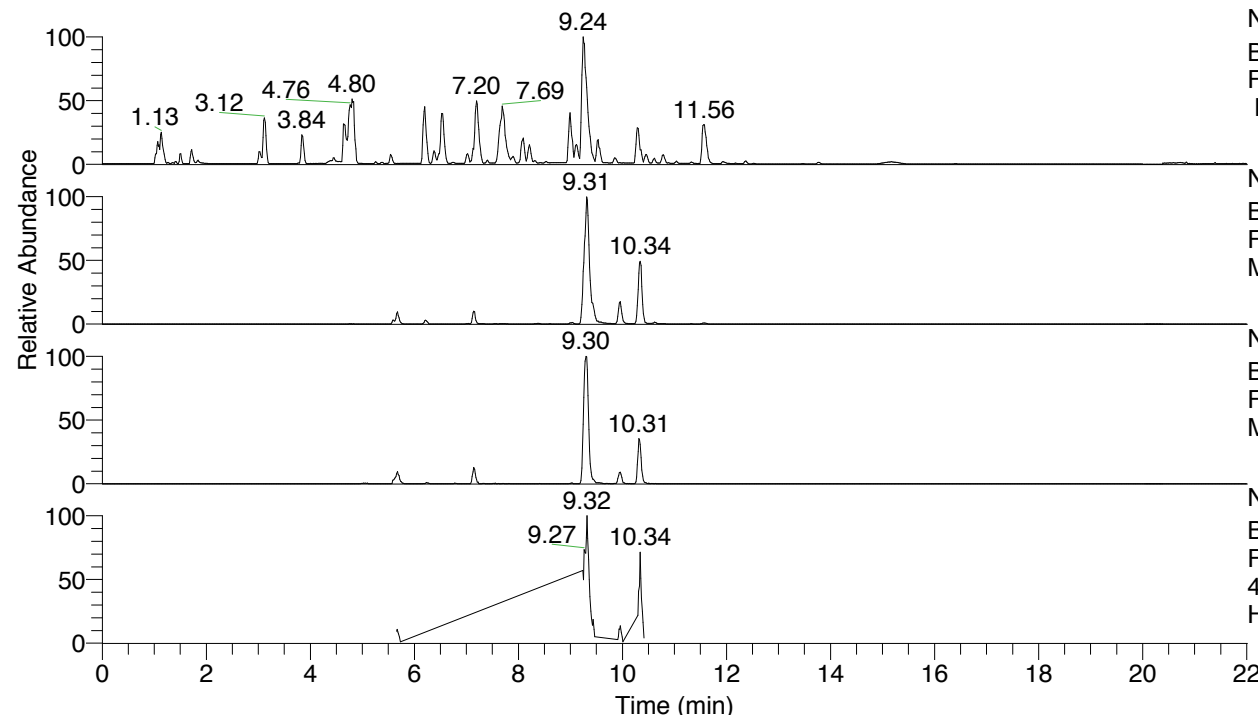


RT: 0.00 - 22.01



NL: 8.52E7
 Base Peak m/z= 100.00000-1500.00000
 F: FTMS + p ESI Full ms [100.00-1500.00]
 MS Hcurta

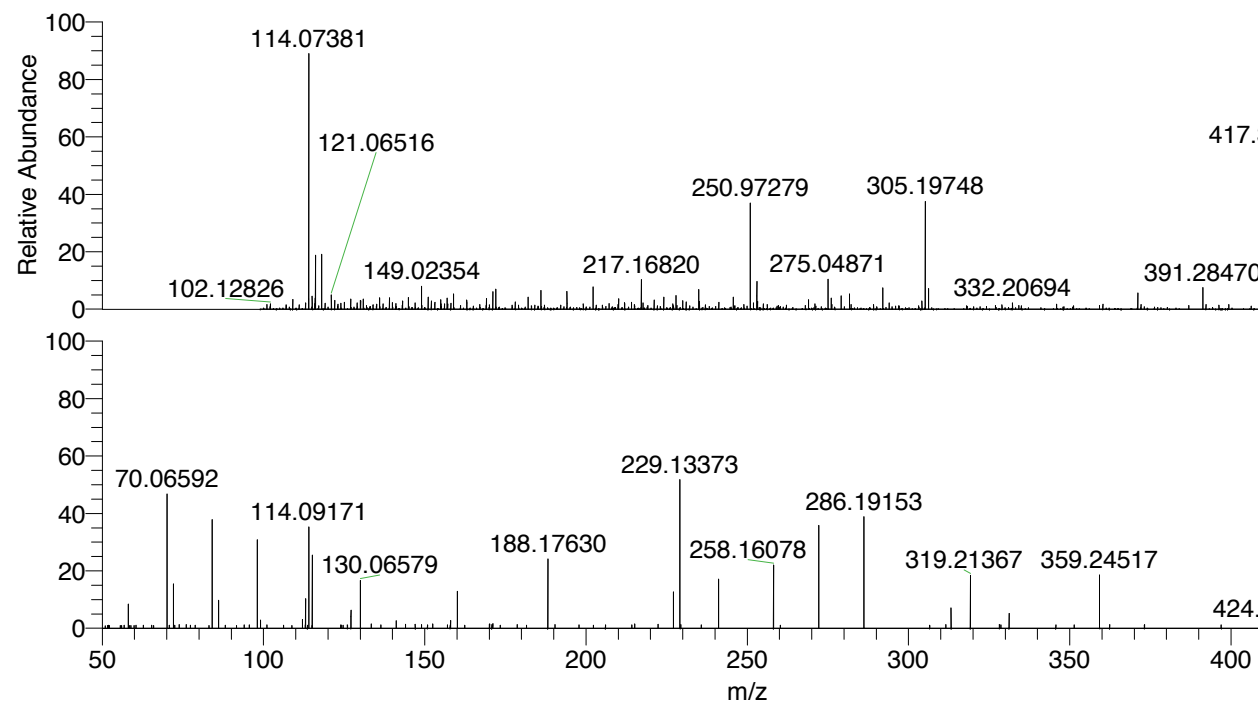
NL: 6.63E6
 Base Peak m/z= 433.32477-433.33343 F:
 FTMS + p ESI Full ms [100.00-1500.00]
 MS Hcurta

NL: 1.33E6
 Base Peak m/z= 217.16629-217.17063 F:
 FTMS + p ESI Full ms [100.00-1500.00]
 MS Hcurta

NL: 6.55E5
 Base Peak m/z= 50.00000-1500.00000 F:
 FTMS + p ESI d Full ms2
 433.33@hcd35.00 [50.00-460.00] MS
 Hcurta

Hcurta#3982-4011 RT: 9.92-9.99 AV: 6
 F: FTMS + p ESI d Full ms2 433.33 ...
 m/z= 50.00000-1000.00000

m/z	Intensity	Relative
58.06606	4876.2	8.59
70.06592	26555.6	46.78
72.08163	8746.9	15.41
73.83673	726.6	1.28
76.01576	717.8	1.26
84.08158	21882.0	38.55
86.06084	5614.1	9.89
98.09710	17507.6	30.84
99.09227	1609.7	2.84
112.11289	1702.6	3.00
113.10781	5825.5	10.26
114.09171	20506.4	36.12
115.12363	14340.0	25.26
127.12349	3578.5	6.30
130.06579	9445.6	16.64
133.41323	874.7	1.54
141.13896	1509.6	2.66
144.08179	796.3	1.40
147.06638	819.0	1.44
149.02232	740.8	1.30
152.45256	822.9	1.45
158.06033	1592.9	2.81
160.14486	7453.5	13.13
170.05964	769.7	1.36
170.16509	825.4	1.45
170.80302	735.6	1.30
171.15000	958.3	1.69
178.68158	730.0	1.29
188.17630	13641.3	24.03
190.36830	758.2	1.34
197.83225	706.2	1.24
215.11802	855.3	1.51
222.37175	826.3	1.46
227.11842	7192.9	12.67
229.13373	29874.3	52.63
229.38468	746.7	1.32
241.13424	9739.3	17.16
258.16078	12538.6	22.09
272.17621	20366.5	35.88
286.19153	21914.0	38.60
311.57542	703.2	1.24
313.20320	3966.5	6.99
319.21367	10378.4	18.28
328.21401	742.1	1.31
331.21458	3032.2	5.34
359.24517	10718.6	18.88
362.37870	760.6	1.34
373.18169	754.2	1.33
396.96697	699.3	1.23
424.44153	829.4	1.46
433.32873	56765.6	100.00
435.76164	819.4	1.44
441.59342	884.5	1.56
444.46787	837.6	1.48
451.92738	719.3	1.27



NL: 1.14E6
 Hcurta#3997 RT: 9.96
 AV: 1 T: FTMS + p ESI
 Full lock ms
 [100.00-1500.00]

NL: 5.63E4
 Hcurta#3980-4012 RT:
 9.92-9.99 AV: 6 F: FTMS
 + p ESI d Full ms2
 433.33@hcd35.00
 [50.00-460.00]

m/z	Intensity	Relative
102.12826		
114.07381		
121.06516		
149.02354		
217.16820		
250.97279		
275.04871		
305.19748		
332.20694		
391.28470		
417.33411		
433.32873		

Hcurta#3982-4011 RT: 9.92-9.99 AV: 6

F: FTMS + p ESI d Full ms2 433.33@hcd35.00 [50.00-460.00]

m/z= 50.00000-1000.00000

m/z	Intensity	Relative
50.93914	495.4	0.87
51.63135	515.5	0.91
51.91601	615.5	1.08
52.20421	546.6	0.96
55.60705	531.6	0.94
55.97028	517.6	0.91
56.81302	598.5	1.05
58.06606	4876.2	8.59
58.34060	547.9	0.97
58.89608	518.9	0.91
59.90806	555.4	0.98
60.45937	595.5	1.05
62.76234	627.8	1.11
65.29007	575.8	1.01
65.30159	577.0	1.02
65.97677	545.9	0.96
70.06592	26555.6	46.78
70.77946	570.1	1.00
72.08163	8746.9	15.41
72.49755	579.3	1.02
73.83673	726.6	1.28
76.01576	717.8	1.26
77.37538	585.6	1.03
78.87151	606.2	1.07
83.11888	522.4	0.92
84.07566	579.7	1.02
84.08158	21882.0	38.55
86.06084	5614.1	9.89
88.12886	599.1	1.06
91.60544	550.0	0.97
94.01350	656.6	1.16
95.64697	652.8	1.15
98.09710	17507.6	30.84
99.09227	1609.7	2.84
101.10775	648.0	1.14
106.19184	592.8	1.04
108.83541	569.3	1.00
112.11289	1702.6	3.00
112.94740	662.8	1.17

Hcurta#3982-4011 RT: 9.92-9.99 AV: 6

F: FTMS + p ESI d Full ms2 433.33@hcd35.00 [50.00-460.00]

m/z= 50.00000-1000.00000

m/z	Intensity	Relative
113.10781	5825.5	10.26
113.62737	593.3	1.05
114.09171	20506.4	36.12
115.05639	563.1	0.99
115.12363	14340.0	25.26
124.00666	680.7	1.20
124.11686	640.0	1.13
124.71492	624.2	1.10
126.02918	681.8	1.20
127.12349	3578.5	6.30
130.06579	9445.6	16.64
133.41323	874.7	1.54
136.39845	668.0	1.18
141.13896	1509.6	2.66
144.08179	796.3	1.40
147.06638	819.0	1.44
149.02232	740.8	1.30
150.84668	652.4	1.15
152.45256	822.9	1.45
157.02892	680.4	1.20
157.89459	650.4	1.15
158.06033	1592.9	2.81
160.14486	7453.5	13.13
162.44036	618.4	1.09
170.05964	769.7	1.36
170.16509	825.4	1.45
170.80302	735.6	1.30
171.00521	643.5	1.13
171.15000	958.3	1.69
173.43668	622.0	1.10
178.68158	730.0	1.29
181.56439	632.7	1.11
188.17630	13641.3	24.03
190.36830	758.2	1.34
197.83225	706.2	1.24
202.30700	590.4	1.04
206.04295	656.9	1.16
214.20143	665.1	1.17
215.11802	855.3	1.51

Hcurta#3982-4011 RT: 9.92-9.99 AV: 6

F: FTMS + p ESI d Full ms2 433.33@hcd35.00 [50.00-460.00]

m/z= 50.00000-1000.00000

m/z	Intensity	Relative
222.37175	826.3	1.46
227.11842	7192.9	12.67
229.13373	29874.3	52.63
229.38468	746.7	1.32
235.74272	687.8	1.21
241.13424	9739.3	17.16
258.16078	12538.6	22.09
260.25289	625.7	1.10
272.17621	20366.5	35.88
286.19153	21914.0	38.60
306.56899	607.6	1.07
311.57542	703.2	1.24
313.20320	3966.5	6.99
319.21367	10378.4	18.28
328.21401	742.1	1.31
328.66647	678.5	1.20
331.21458	3032.2	5.34
345.69908	671.5	1.18
351.39602	679.8	1.20
359.24517	10718.6	18.88
362.37870	760.6	1.34
373.18169	754.2	1.33
396.96697	699.3	1.23
424.44153	829.4	1.46
433.32873	56765.6	100.00
435.76164	819.4	1.44
441.59342	884.5	1.56
444.46787	837.6	1.48
451.92738	719.3	1.27