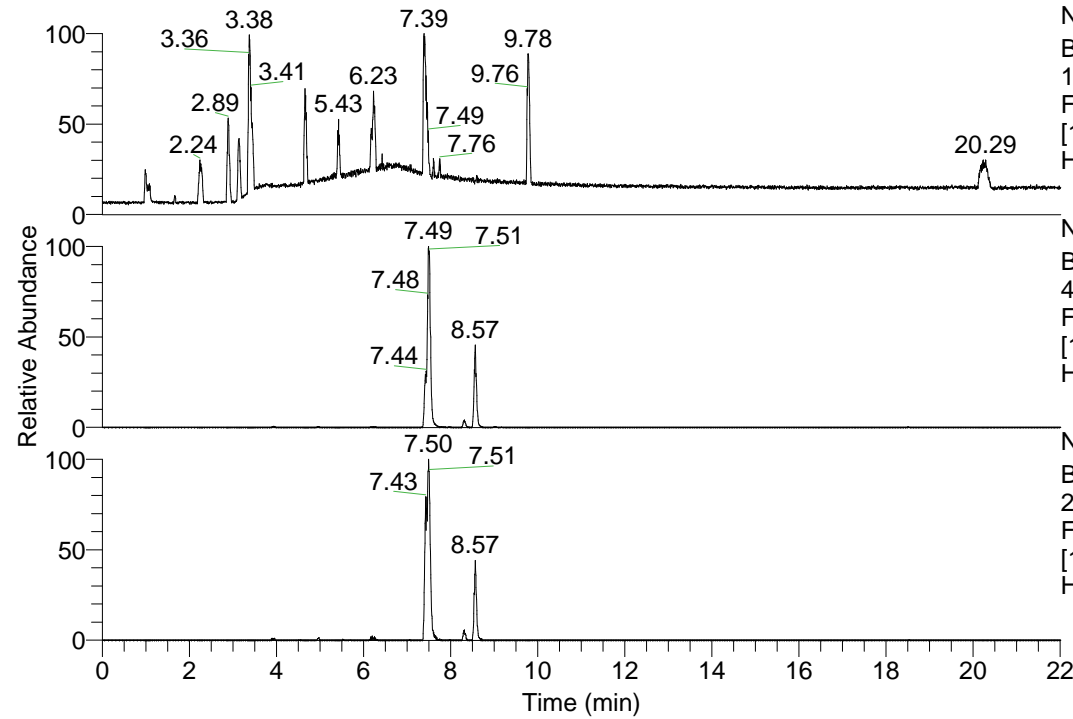


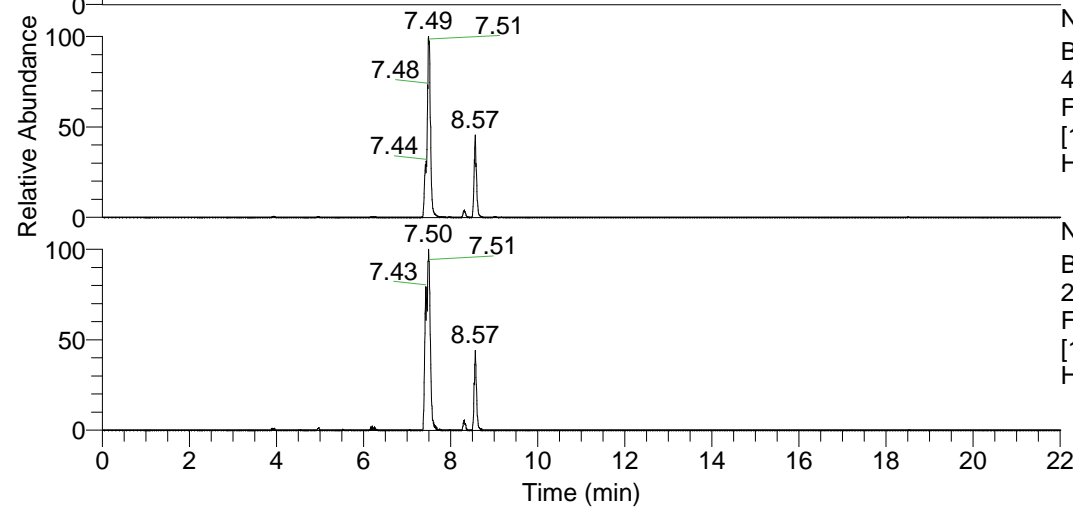
RT: 0.00 - 22.01



NL: 1.13E8  
 Base Peak m/z=  
 100.00000-1500.00000 F:  
 FTMS + p ESI Full ms  
 [100.00-1500.00] MS  
 Hcurta\_HDX

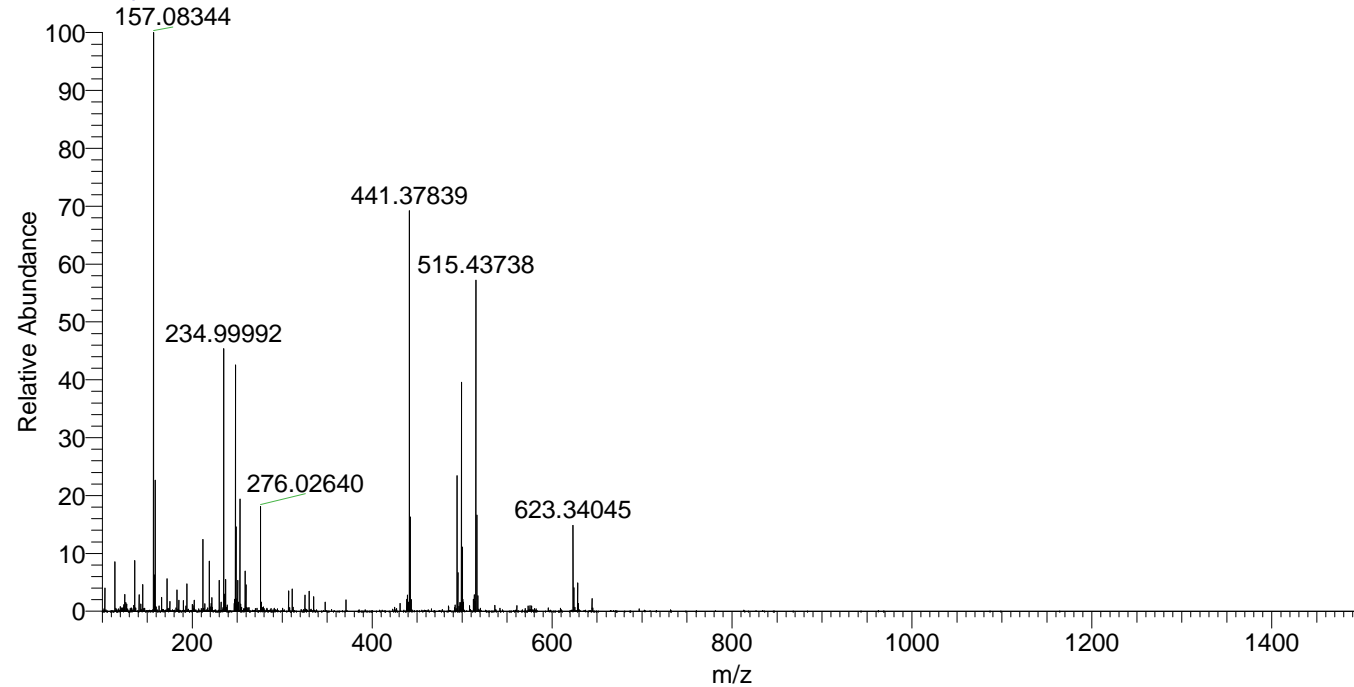
Hcurta\_HDX#1387 RT: 8.57  
 T: FTMS + p ESI Full ms [100.00-1500.00]  
 m/z= 441.00000-442.00000

m/z	Intensity	Relative	Delta (ppm)	Composition
441.37839	14864295.0	100.00	-0.86	C <sub>23</sub> H <sub>33</sub> <sup>2</sup> H <sub>8</sub> O <sub>2</sub> N <sub>6</sub>
			2.65	C <sub>23</sub> H <sub>31</sub> <sup>2</sup> H <sub>9</sub> O <sub>2</sub> N <sub>6</sub>
			-4.36	C <sub>23</sub> H <sub>35</sub> <sup>2</sup> H <sub>7</sub> O <sub>2</sub> N <sub>6</sub>



NL: 3.26E7  
 Base Peak m/z=  
 441.37711-441.38153 F:  
 FTMS + p ESI Full ms  
 [100.00-1500.00] MS  
 Hcurta\_HDX

Hcurta\_HDX #1387 RT: 8.57 AV: 1 NL: 2.14E7  
 T: FTMS + p ESI Full ms [100.00-1500.00]



Hcurta\_HDX #1387 RT: 8.57 AV: 1 NL: 1.48E7  
 T: FTMS + p ESI Full ms [100.00-1500.00]

